

JUVENILE JUSTICE INFORMATION SYSTEM NEWSLETTER

VOLUME 1, ISSUE 2 DECEMBER 2008

WELCOME FROM THE JJIS TEAM

We welcome readers to our second issue of the JJIS Newsletter. Our first Newsletter was released in May 2008 and can be accessed here: <http://hawaii.gov/ag/cpja/main/jjis/>. This issue will continue with updates on our Next Generation Juvenile Justice Information System (on track to launch in 2010), Kauai's Green Box system, and a variety of research updates that include crime and delinquency mapping

of arrests for property offenses by county.

Finally, we welcome two new members to the JJIS team – Michelle Nishizawa and Tiana Solis. As always, if you have any suggestions for future newsletter content or questions about the current information, please contact David Mayeda at (808) 586-1099 or david.t.mayeda@hawaii.gov.

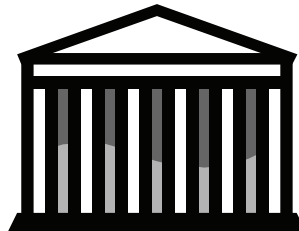
NEXT GENERATION JUVENILE JUSTICE INFORMATION SYSTEM UPDATE

Work on the Next Generation Juvenile Justice Information System (NG JJIS) continues toward its 2010 release, and the following is progress that has been made:

Video Conference Meetings have been held every week from June – Sept. JJIS Users have been able to attend these meetings from their desks – and the meetings were made possible through the generosity of the Judiciary. All major screen layouts have been reviewed in

these meetings and changes made according to the users' needs. Michelle Nishizawa and Greg Malick have held meetings in each of the counties in order to do a final face-to-face wrap-up of these screen designs. These meetings were conducted during the first weeks of October. In other items of interest, the JJIS Team recently began using a new Version Control System which allows them to work in the same environment at the same

time. The JJIS Team is also currently reviewing the Business Rules of the current JJIS to identify the gaps in functionality that must be filled by the NG JJIS.



DID YOU KNOW, BETWEEN 1998 AND 2007 STATEWIDE:

- *An average of 3,357 juveniles were arrested each year for a status offense, with a yearly average of 8,794 total status offense arrests.*
- *The most common status offense that youth were arrested for was running away from home, yielding an average of 1,760 youth arrested each year and 5,107 runaway arrests.*
- *By contrast, an average of 1,154 youth were arrested each year for a drug offense, with a yearly average of 1,466 drug arrests.*

(Source: JJIS)

INSIDE THIS ISSUE:

NEXT GENERATION JJIS	1
GREEN BOX KAUAI POLICE	2
WELCOME NEW JJIS STAFF	2
NATIONAL CRIME INFORMATION CENTER	3
STATE OF HAWAII JUVENILE PROPERTY CRIME TRENDS	4
HONOLULU & MAUI COUNTY JUVENILE PROPERTY CRIME TRENDS	5
HAWAII & KAUAI COUNTY JUVENILE PROPERTY CRIME TRENDS	6

GREEN BOX KAUAI POLICE DEPARTMENT PROJECT

The Juvenile Green Box (JGB) is a web-based booking module that is currently under development for the Kauai Police Department (KPD). Implementation of the JGB is being addressed in two phases. The first phase is the development of the booking module where significant progress has been made and is currently being system and acceptance tested that will continue through November 2008. The second phase will implement the interface between JGB and the digital fingerprint and mug photo systems. This interface will link the recorded arrest information with the arrestee's digitally stored fingerprint and mug photo. KPD has implemented the adult version of this system, and it has effectively improved the efficiency of their operations.

WELCOME MICHELLE NISHIZAWA AND TIANA SOLIS

Michelle Nishizawa comes to us from the Department of the Attorney General's Missing Child Center-Hawaii where she worked as Assistant Coordinator. She also has experience in Information Technology as a Programmer Analyst with Time Warner Cable. This background is a great fit for her position as a JJIS Analyst.

According to Michelle, "The working environment is an exciting challenge as it provides opportunities to learn new technologies such as Java and J2EE." She is part of the team developing the Next Generation JJIS and is working on the design of the user screens.



Michelle Nishizawa

Tiana Solis is a new JJIS Analyst. She received her undergraduate and graduate degrees in Computer Science from the State University of New York, Institute of Technology in Utica. She is currently part of the team working on the Next Generation JJIS project.

Prior to moving to Oahu, Tiana was an Instructor and Academic Advisor at Florida International University in Miami where she taught programming courses and computer ethics. She volunteered to help juveniles and young adults focus on educational activities.



Tiana Solis

NATIONAL CRIME INFORMATION CENTER

The JJIS interface to the National Crime Information Center (NCIC) went live on June 18, 2008. This interface enabled the State to be in compliance with Federal Statutes that deal with missing children.

Police departments statewide are entering this information directly into JJIS. Although the procedures for handling a missing or runaway juvenile vary among police departments, the JJIS-related procedures are quite consistent.

- A call comes in to the police department for a missing or runaway juvenile.
- After confirming the missing or runaway status, the Dispatch section enters the juvenile into JJIS. The interface sends an “entry” message to NCIC within 2 hours. The Dispatch section will receive a confirmation message from NCIC that the message was processed.
- When the juvenile is located, the Dispatch section closes the case in JJIS. The interface will send a “clear” message to NCIC to remove the record from their active file. The Dispatch section will receive a confirmation message from NCIC that the message was processed.
- Records with missing height and/or weight information generate an error message so that the case can be corrected and consequently sent to NCIC. The corrections are handled by the Juvenile, Records or Runaway Detail sections/divisions within the police departments. The JJIS QA Analyst also works with the agency liaisons in identifying these errors when needed.

As of November 1, roughly 3,500 transactions have been processed by the interface as seen in the table below.

	NCIC Messages	Open Cases
HPD	2,856	110
HCPD	524	52
KPD	162	4
MPD	135	13
TOTAL	3,677	179

Overall, the implementation was virtually trouble-free. This was made possible with the collaboration of police departments’ liaisons and their project teams, the Missing Child Center-Hawaii (MCCH), Department of Information Technology (DIT), Hawaii Criminal Justice Data Center (HCJDC), the FBI, and the software vendor.

DID YOU KNOW, BETWEEN 1998 AND 2007 STATEWIDE:

- *The total number of juvenile arrests has decreased 16.2%, from 21,826 in 1998 to 18,295 in 2007.*
- *The total number of juveniles arrested has decreased 16.6%, from 10,285 in 1998 to 8,742 in 2007.*
- *Runaway arrests, however, have increased by 6.7%, from 4,907 in 1998 to 5,236 in 2007.*
- *Accordingly, individuals arrested for runaway have increased by 5.3%, from 1,641 in 1998 to 1,728 in 2007.*

(Source: JJIS)

ARREST TRENDS BY COUNTY

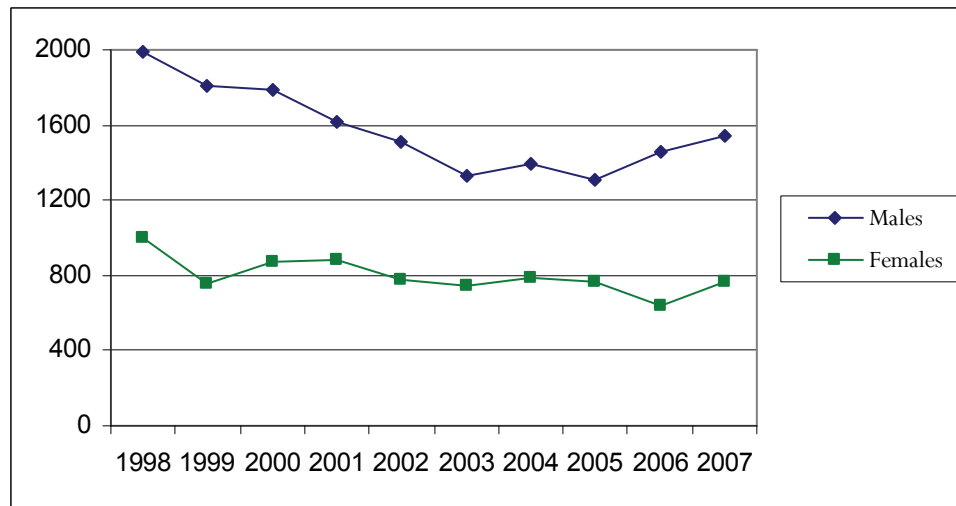
The following graphs represent trends in juvenile arrests by county for “property crimes.” As defined for this report, property crimes include the following offenses:

- Burglary
- Motor vehicle theft
- Larceny-theft
- Computer/credit card fraud
- Trespass
- Other property crimes (e.g., criminal property damage)

Maps in this section were made using Geographic Information Systems software. Dots represent the general location in which juveniles were arrested for property offenses for the year 2007.

These data can help social service providers and law enforcement identify “hot spots” that illustrate where different types of juvenile offenses occur most commonly and advocate for resources accordingly.

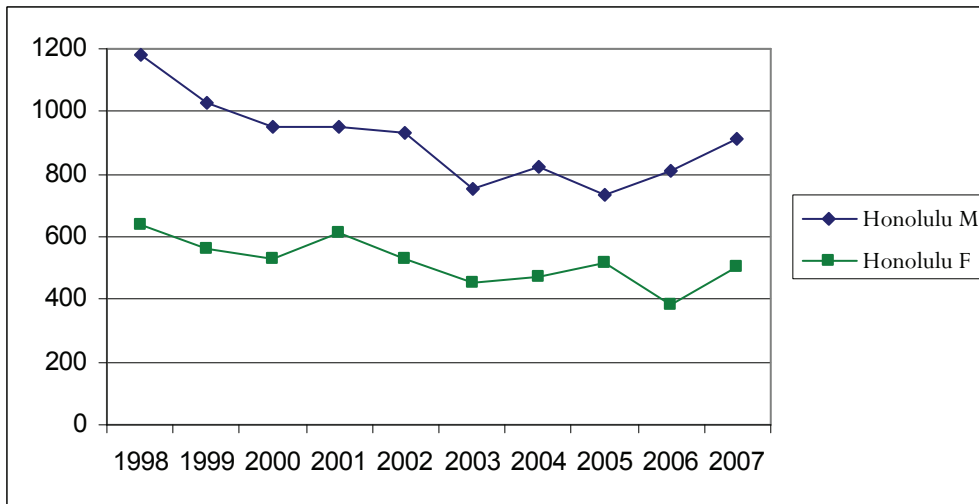
State of Hawaii, Number of Juveniles by Sex, Arrested for Property Offenses, 1998-2007



State of Hawaii, Number of Juveniles by Sex and County, Arrested for Property Offenses, 1998-2007

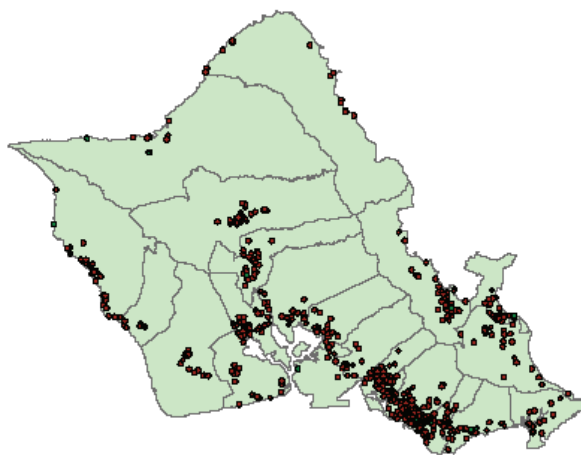
	Honolulu Males	Honolulu Females	Maui Males	Maui Females	Hawaii Males	Hawaii Females	Kauai Males	Kauai Females
1998	1,184	639	369	161	284	134	150	67
1999	1,029	561	374	142	294	133	112	40
2000	952	528	360	162	321	129	149	52
2001	951	612	324	140	240	95	104	41
2002	932	527	260	130	205	84	110	37
2003	750	455	270	101	195	117	113	69
2004	821	473	264	118	215	112	90	83
2005	735	519	274	110	210	94	87	42
2006	811	380	344	124	211	101	89	38
2007	912	503	339	112	185	96	109	60
TOTAL	9,077	5,197	3,178	1,300	2,360	1,095	1,113	529

HONOLULU COUNTY, JUVENILES ARRESTED FOR PROPERTY OFFENSES

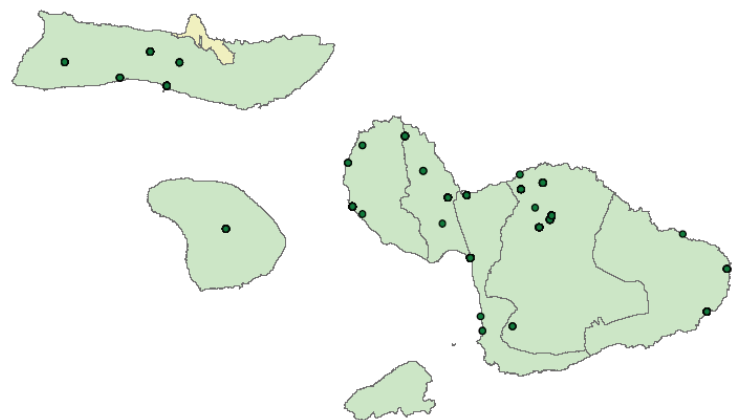


	Honolulu Males	Honolulu Females
1998	1,184	639
1999	1,029	561
2000	952	528
2001	951	612
2002	932	527
2003	750	455
2004	821	473
2005	735	519
2006	811	380
2007	912	503
TOTAL	9,077	5,197

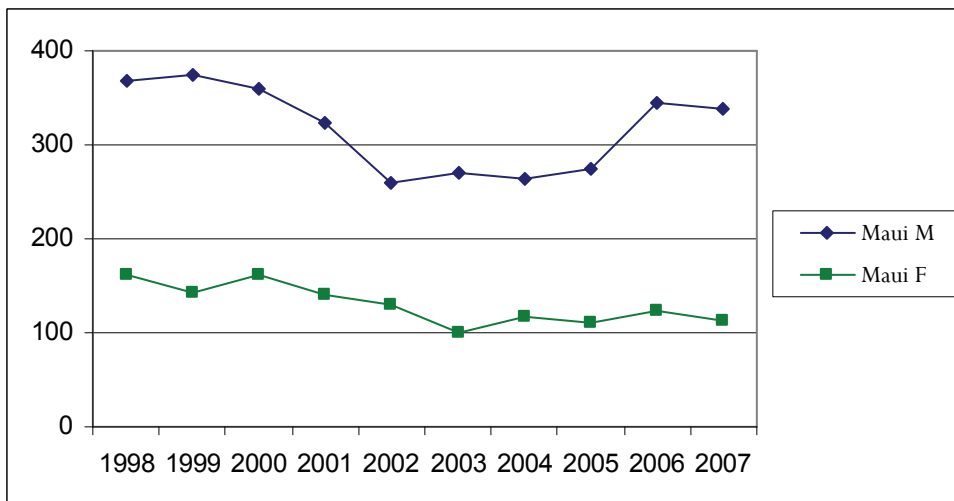
Honolulu County, Property Offense Locations, 2007



Maui County, Property Offense Locations, 2007

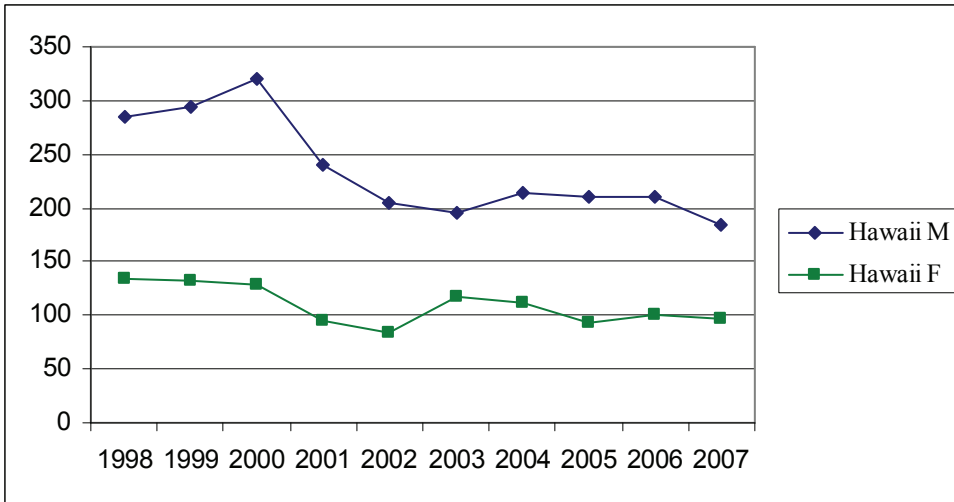


MAUI COUNTY, JUVENILES ARRESTED FOR PROPERTY OFFENSES



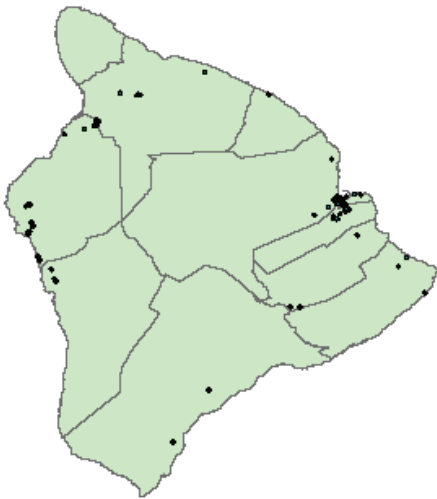
	Maui Males	Maui Females
1998	369	161
1999	374	142
2000	360	162
2001	324	140
2002	260	130
2003	270	101
2004	264	118
2005	274	110
2006	344	124
2007	339	112
TOTAL	3,178	1,300

HAWAII COUNTY, JUVENILES ARRESTED FOR PROPERTY OFFENSES

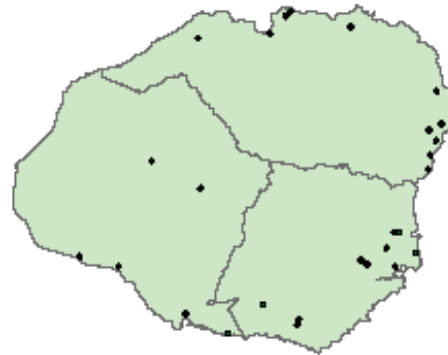


	Hawaii Males	Hawaii Females
1998	284	134
1999	294	133
2000	321	129
2001	240	95
2002	205	84
2003	195	117
2004	215	112
2005	210	94
2006	211	101
2007	185	96
TOTAL	2,360	1,095

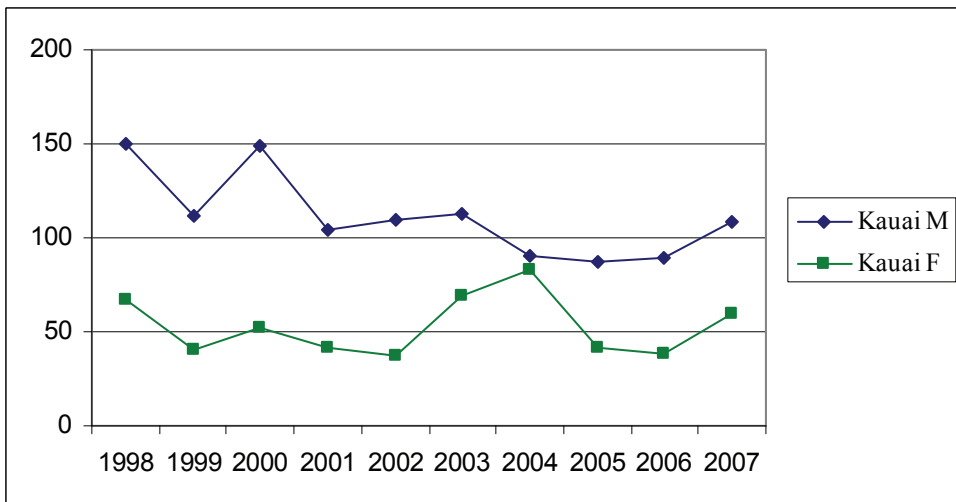
Hawaii County, Property Offense Locations, 2007



Kauai County, Property Offense Locations, 2007



KAUAI COUNTY, JUVENILES ARRESTED FOR PROPERTY OFFENSES



	Kauai Males	Kauai Females
1998	150	67
1999	112	40
2000	149	52
2001	104	41
2002	110	37
2003	113	69
2004	90	83
2005	87	42
2006	89	38
2007	109	60
TOTAL	1,113	529