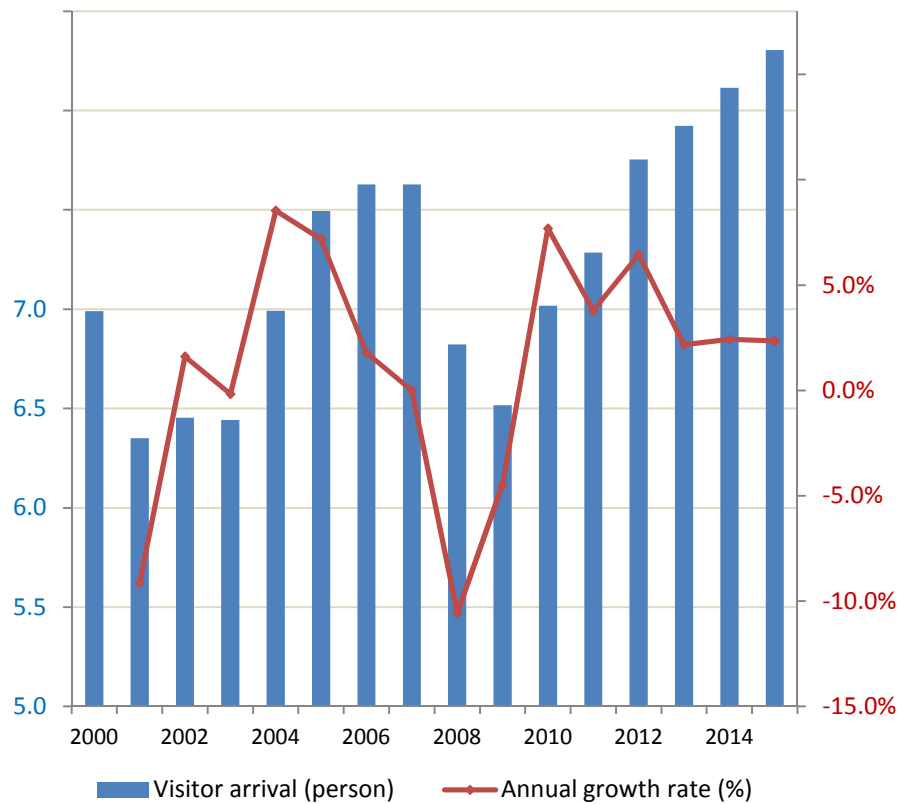


DBEDT Forecasts (2Q 2012): Visitor Arrival

Visitor Arrivals (Air only)



	Air only		Total	
	person	annual growth (%)	person	annual growth (%)
2005	7,416,574	7.3%	7,494,236	7.2%
2006	7,528,105	1.5%	7,628,117	1.8%
2007	7,496,820	-0.4%	7,627,819	0.0%
2008	6,713,436	-10.4%	6,822,912	-10.6%
2009	6,420,448	-4.4%	6,517,054	-4.5%
2010	6,916,893	7.7%	7,018,132	7.7%
2011	7,160,000	3.5%	7,284,000	3.8%
2012	7,589,000	6.0%	7,754,000	6.5%
2013	7,757,000	2.2%	7,923,000	2.2%
2014	7,949,000	2.5%	8,115,000	2.4%
2015	8,139,000	2.4%	8,305,000	2.3%