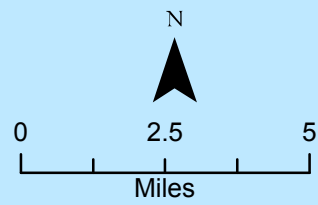
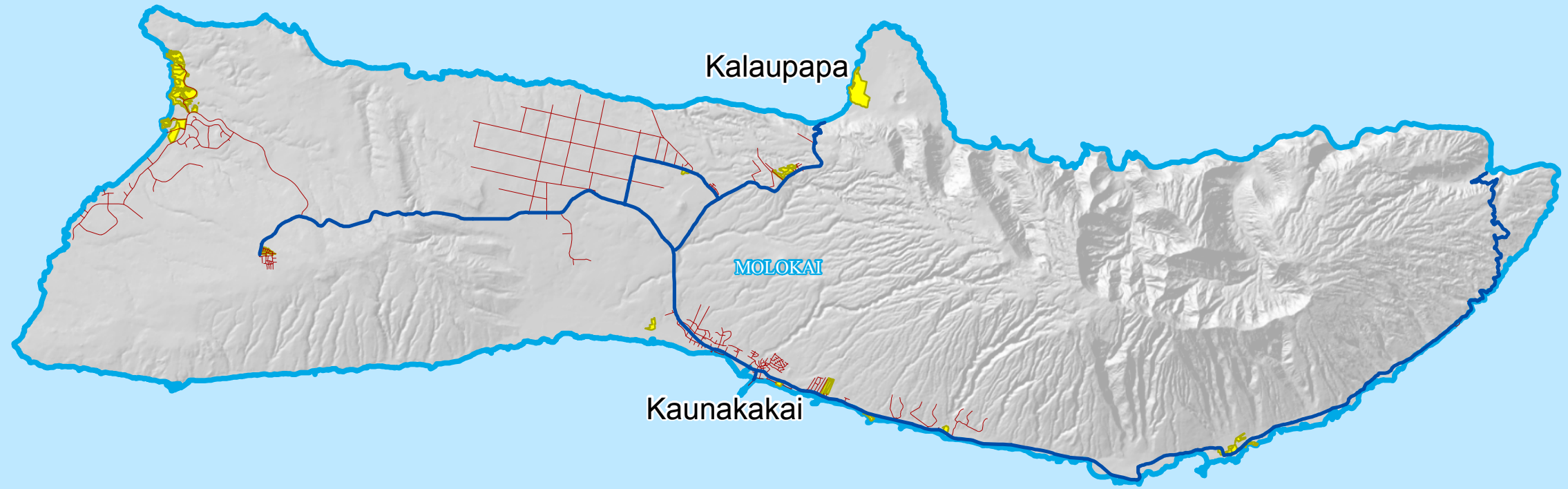


Islands of Molokai and Lanai

- Developable Land
- Development Plan Area
- State Roads
- Minor Roads



This map was produced by the Office of Planning (OP) for planning purposes. It should not be used for boundary interpretations or other spatial analysis beyond the limitations of the data. Information regarding compilation dates and accuracy of the data presented can be obtained from OP.
 Date: 05/04/06
 Map No: 20060504-05
 Sources:
 Developable Land - Land in State Land Use Urban District, <20% slope, 5 acres and above.
 State Roads - HPMS (Highway Performance Monitoring System), State DOT, 2003.
 Minor Roads - County of Maui, 2005.
 Development Plan Areas - Office of Planning.