

PILANI MAI KE KAI SUBDIVISION
PHASE I

LAND SITUATED ON THE SOUTHEASTERLY SIDE OF KUKUIHALE ROAD
AND BEING ALSO ON THE EASTERLY BOUNDARY OF
ANAHOLA RESIDENCE LOTS, THIRD INCREMENT, PARCEL B (FILE PLAN 2039)
AND AMENDED ANAHOLA RESIDENCE LOTS, SECOND INCREMENT (FILE PLAN 1518)
AT ANAHOLA, KAWAII, HAWAII

Being a portion of the Government (Crown) Land of Anahola
designated as Hawaiian Home Lands by Section 203 of the
Hawaiian Homes Commission Act of 1920 (Section 532,
Revised Laws of Hawaii, 1925) and covered by Public Law 594,
80th Congress, 2nd Session, Chapter 397 dated June 3, 1948.

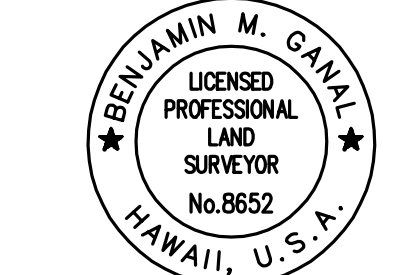
OWNER: Department of Hawaiian Home Lands
ADDRESS: 91-5420 Kapolei Parkway
Kapolei, Hawaii 96707

SUBDIVIDED INTO LOTS 1 TO 89, INCLUSIVE
AND DESIGNATION OF EASEMENTS 1 TO 35, INCLUSIVE
AND DESIGNATION OF RESTRICTION OF VEHICULAR ACCESS RIGHTS
AFFECTING LOTS 1 TO 6 INCLUSIVE, 10, 11, 16, 18 TO 23 INCLUSIVE,
32, 38, 39, 43, 51 TO 55 INCLUSIVE, 62 TO 65 INCLUSIVE AND 67

AREA = 70.368 ACRES

This map was prepared by Akinaka & Associates, Ltd.
under the direct supervision of the undersigned.
The actual field survey was conducted by Esaki Surveying
and Mapping, Inc. between July 7, 2008 and July 15, 2008, and
may be checked by the State Surveyor with Field
Book No. 703 and calculations in Job File 06-147

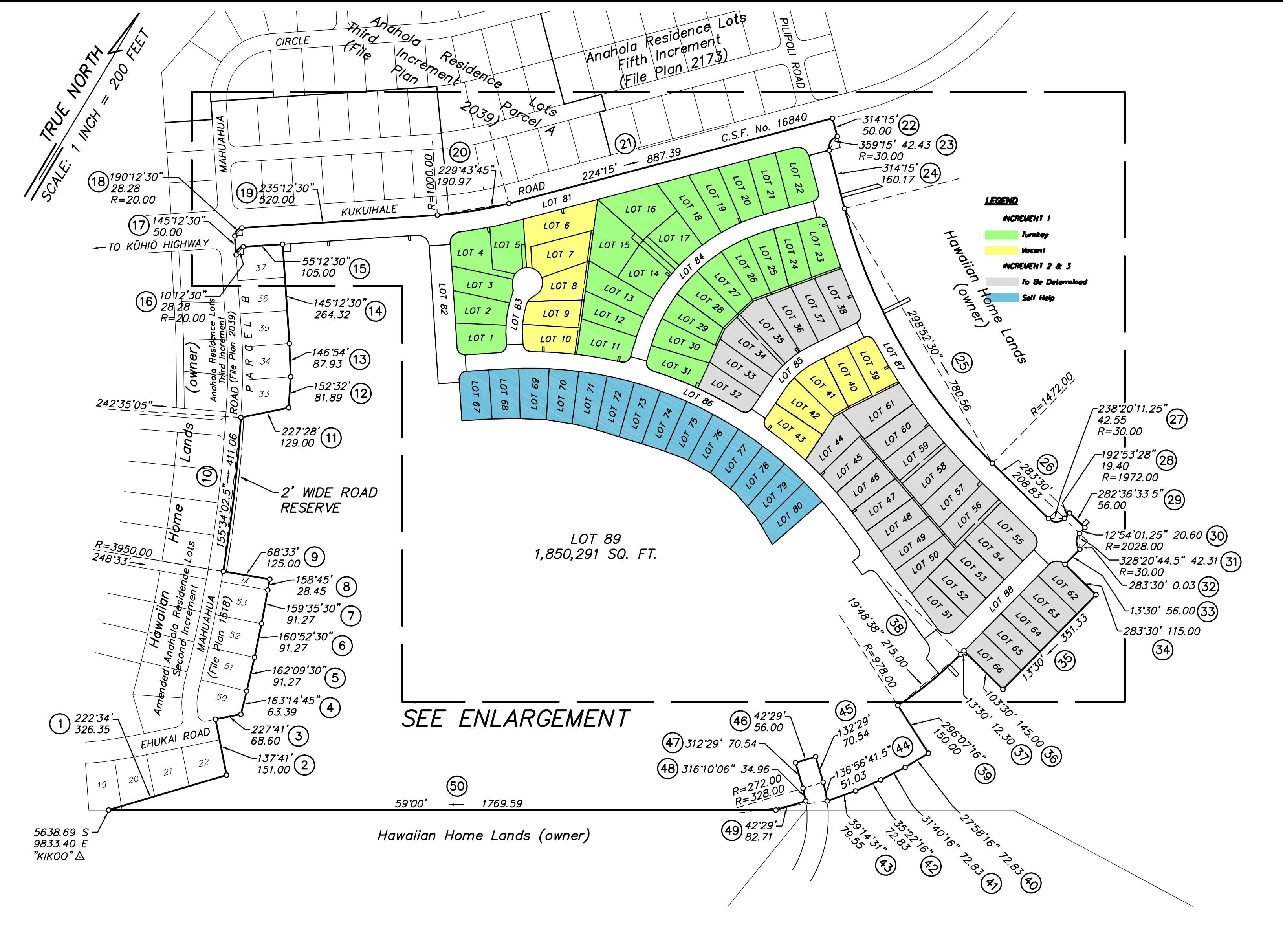
Akinaka & Associates, Ltd.
3049 Ulenia Street
Honolulu, Hawaii
July 29, 2008



By _____ (Expires 4/30/10)
Licensed Professional Land Surveyor
Certificate Number 8652

LEGEND

- INCREMENT 1
- Turnkey
- Vacant
- INCREMENT 2 & 3
- To Be Determined
- Self Help



- NOTES:
- AREA OF EASEMENTS:
- EASEMENT 1 for Electrical Purposes affecting Lot 4 = 73 sq. ft.
 - EASEMENT 2 for Electrical Purposes affecting Lot 5 = 611 sq. ft.
 - EASEMENT 3 for Electrical Purposes affecting Lot 6 = 62 sq. ft.
 - EASEMENT 4 for Drainage Purposes affecting Lots 7 to 10, inclusive = 1653 sq. ft.
 - EASEMENT 5 for Electrical Purposes affecting Lot 10 = 62 sq. ft.
 - EASEMENT 6 for Electrical Purposes affecting Lot 11 = 62 sq. ft.
 - EASEMENT 7 for Electrical Purposes affecting Lot 14 = 62 sq. ft.
 - EASEMENT 8 for Utility and Access Purposes affecting Lot 15 = 1719 sq. ft.
 - EASEMENT 9 for Electrical Purposes affecting Lot 15 = 421 sq. ft.
 - EASEMENT 10 for Utility and Access Purposes affecting Lot 16 = 1719 sq. ft.
 - EASEMENT 11 for Electrical Purposes affecting Lot 19 = 65 sq. ft.
 - EASEMENT 12 for Electrical Purposes affecting Lot 23 = 63 sq. ft.
 - EASEMENT 13 for Drainage Purposes affecting Lots 23 to 29, inclusive = 2033 sq. ft.
 - EASEMENT 14 for Electrical Purposes affecting Lot 31 = 99 sq. ft.
 - EASEMENT 15 for Drainage Purposes affecting Lot 34 = 1768 sq. ft.
 - EASEMENT 16 for Electrical Purposes affecting Lot 35 = 98 sq. ft.
 - EASEMENT 17 for Electrical Purposes affecting Lot 38 = 62 sq. ft.
 - EASEMENT 18 for Electrical Purposes affecting Lot 39 = 62 sq. ft.
 - EASEMENT 19 for Drainage Purposes affecting Lots 39 to 41, inclusive = 976 sq. ft.
 - EASEMENT 20 for Electrical Purposes affecting Lot 43 = 62 sq. ft.
 - EASEMENT 21 for Electrical Purposes affecting Lot 45 = 62 sq. ft.
 - EASEMENT 22 for Drainage Purposes affecting Lots 45 to 50, inclusive = 1957 sq. ft.
 - EASEMENT 23 for Electrical Purposes affecting Lot 47 = 63 sq. ft.
 - EASEMENT 24 for Drainage Purposes affecting Lot 56 = 1691 sq. ft.
 - EASEMENT 25 for Electrical Purposes affecting Lot 57 = 103 sq. ft.
 - EASEMENT 26 for Drainage Purposes affecting Lot 59 = 1551 sq. ft.
 - EASEMENT 27 for Electrical Purposes affecting Lot 60 = 62 sq. ft.
 - EASEMENT 28 for Electrical Purposes affecting Lot 89 = 400 sq. ft.
 - EASEMENT 29 for Electrical Purposes affecting Lot 89 = 62 sq. ft.
 - EASEMENT 30 for Electrical Purposes affecting Lot 89 = 62 sq. ft.
 - EASEMENT 31 for Drainage Purposes = 1065 sq. ft.
 - EASEMENT 32 for Drainage Purposes = 780 sq. ft.
 - EASEMENT 33 for Drainage Purposes = 186 sq. ft.
 - EASEMENT 34 for Electrical Purposes = 63 sq. ft.
 - EASEMENT 35 for Drainage Purposes = 342 sq. ft.

1. Figures shown thus (1) indicates number of course in description.
2. All lots are owned by Department of Hawaiian Home Lands unless otherwise noted.
3. All corners marked with 1/2" pipe unless otherwise noted.
4. Owners of adjoining lands are from records filed at the Real Property Mapping Branch.
5. All azimuths and record coordinates are referred to Government Survey Triangulation Station "KIKOD".
6. --- denotes no Vehicular Access Permitted.
7. --- denotes Vehicular Access Permitted.
8. Domestic water service will not be available until the required construction improvements for this subdivision are completed and accepted by the Department of Water, County of Kauai.

ENLARGEMENT