



Ka Nūhou

Volume 34, No. 1

Department of Hawaiian Home Lands

Spring 2008

Tribute to the Citizen Prince

DHHL Dedicates Hale Kalaniana'ole



Wednesday, March 26, 2008, was a state holiday commemorating the birth of Prince Jonah Kūhiō Kalaniana'ole, the "father" of the Hawaiian Homes Commission Act. It was also a day filled with a parade, ceremonies, speeches, songs and music as Governor Linda Lingle, Lt. Governor James R. "Duke" Aiona, Jr., Senate President Colleen Hanabusa and Senator Jill Tokuda joined the Kapolei homestead community, Hawaiian Homes Commission and other state and community leaders at the dedication of Hale Kalaniana'ole, the new headquarters for the Department of Hawaiian Home Lands (DHHL) at East Kapolei.

Located at the end of the Kapolei Parkway, Hale Kalaniana'ole is a two-story, 45,000 square-foot office building on a nine-acre landscaped parcel, which includes parking.

"Hale Kalaniana'ole is the permanent home for

DHHL," said Micah A. Kāne, Hawaiian Homes Commission chairman and director of the department. "We will be moving the entire Honolulu operations of the department to our new home. The department is the vanguard of government services moving to Kapolei. We hope this will be the beginning for a hub of state government based in Kapolei."

Governor Lingle, who participated in the dedication, congratulated the department for the landmark event and for its commitment to the Kapolei region.

"As Prince Jonah Kūhiō Kalaniana'ole envisioned, the homestead lands are indeed beginning to flourish," said Governor Lingle. "With more than 60 percent of homesteaders from O'ahu living on the Leeward Coast, it makes sense to bring the Department of Hawaiian Home Lands into the community it serves. In addition to the new headquarters, DHHL is lifting the entire community by providing infrastructure for the University of Hawai'i West O'ahu campus, building highways to alleviate traffic congestion, increasing economic opportunities in the area, and creating more affordable housing opportunities."



Kahu William Kaina blesses Hale Kalaniana'ole while (left to right) HHC Chair Micah Kāne, Gov. Linda Lingle, Quentin Kawānanakoa and Sen. Colleen Hanabusa prepare to untie the maile.



Visit our Website: www.hawaii.gov/dhhl

Chairman's Message



Chairman Micah A. Kāne



Enjoying the keiki activities during the dedication ceremony.



Before the parade--Clyde Namu'o, OHA Administrator, Haunani Apoliona, OHA Chair, and Micah Kāne, HHC Chair.

Aloha Kākou!

Last month we dedicated our new office building in East Kapolei, and I want to thank the many volunteers who made this day successful and memorable for everyone. The red shirts of the Kapolei homesteaders and their supporters showed the aloha that is such a defining part of our culture. Mahalo for all you do.

Our move into Hale Kalaniana'ole is our move into our new home. It took a lot of planning, preparation, and commitment to take that first step and now each of you who have an Undivided Interest Award have the same opportunity to take that first step into your new home.

Pi'ilani Mai Ke Kai on Kaua'i, La'i 'Ōpua on the Big Island, Waiohuli on Maui, and East Kapolei I on O'ahu will soon begin lot selection and that means each of our Undivided Interest lessees will have the opportunity for homeownership.

Homeownership is there for those who are committed and have done their planning and preparation in order to financially qualify for a home loan. At the department, we are doing everything we can to provide homeownership opportunities for you. If you will do your part and meet us halfway, you can be a homeowner.

The Home Ownership Assistance Program or HOAP has worked tirelessly to contact every Undivided Interest lessee. If you have not been contacted by HOAP or by any of their contractors, please give them a call to-



Wilson and Matthew Moe carrying Prince Kūhiō's portrait.

day at 1-866-512-HOAP (4627), or by email at: hoap@hawaii.gov. We are getting ready to build your home; you need to get ready to be a homeowner.

For those holding an Undivided Interest lease for East Kapolei I, Kumuhau in Waimānalo, or Pi'ilani Mai Ke Kai on Kaua'i, we expect to hold orientation meetings and lot selection meetings this year for the first phases of each project. You will be notified of when and where these meetings will be held. See you there!

Mahalo,

Micah K



Gov. Linda Lingle, Rev. William Kaina and Quentin Kawānanakoa walking towards Hale Kalaniana'ole.



Ka Nūhou

A publication of the State Department of Hawaiian Home Lands

Chairman's Office:
1099 Alakea Street, Suite 1200
Honolulu, Hawai'i 96813
Ph. (808) 586-3800 - Fax. (808) 586-3857

Information and Community Relations Office:
Suite 1200
Ph. (808) 586-3840 - Fax. (808) 586-3857

Linda Lingle
Governor, State of Hawai'i

Micah A. Kāne
Chairman, Hawaiian Homes Commission

Hawaiian Homes Commissioners
Perry O. Artates, Maui
Donald Chang, O'ahu
Stuart Hanchett, Kaua'i
Malia Kamaka, West Hawai'i
Francis Lum, O'ahu
Trish Morikawa, O'ahu
Milton Pa, Moloka'i

Lloyd Yonenaka, Public Information Officer

Kenneth H. Toguchi, Editor
Rhonda Funn, Associate Editor
Leanella Kauwenaole, Associate Editor

Ka Nūhou is published by the Information and Community Relations Office of the Department of Hawaiian Home Lands to provide information to and about the beneficiaries of the Hawaiian Homes Commission Act, 1920, as amended. No part of this publication may be copied or reprinted in any form without the express permission of the department.

Photo Credits:
Rhonda Funn, Leanella Kauwenaole, Jerry Alambatin, DreanaLee Kalili, Council for Native Hawaiian Advancement

Printed on recycled paper.



DHHL logo created by Stacey Leong Mills. The lau and hōkū symbolize Papa and Wākea, the two cosmogonic creators of the Hawaiian people. Papa, Earth-Mother, is symbolized by the lau (kalo leaf). Wākea, Sky-Father, is symbolized by the hōkū (star).



Samantha Wilson and Kianna Kahalewai pose for the camera.



New DHHL Directory



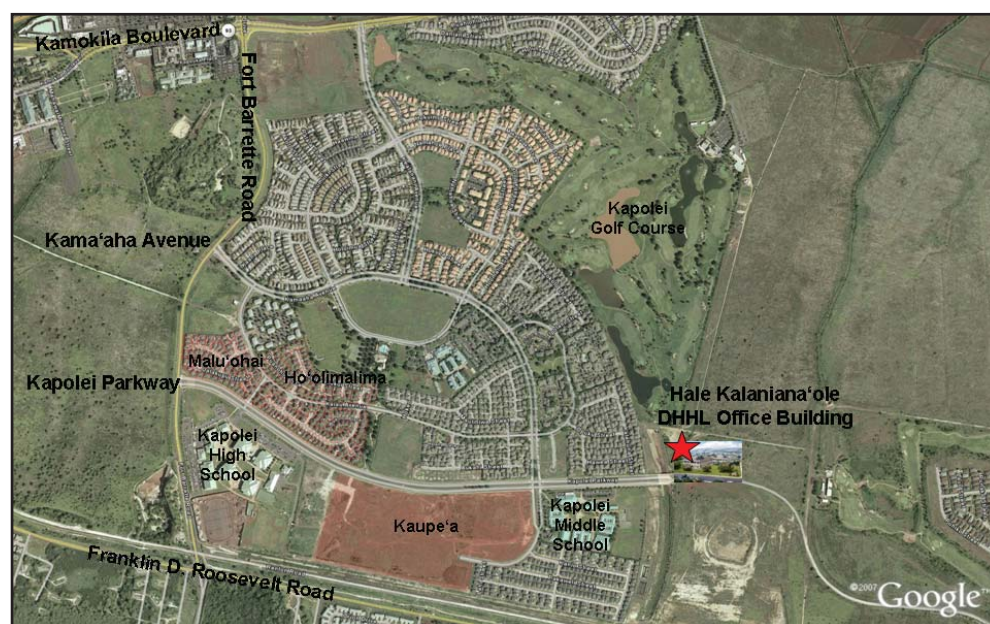
Street address:
91-5420 Kapolei Parkway
Kapolei, Hawai'i 96707

Mailing address:
To be assigned

DHHL will be moving May 2 - May 9

Operations During the Move

- Cashier:** *Normal operations at Ali' i Place to May 5, 2008
Closed May 6 & 7, 2008
Re-opens May 8, 2008 at Kapolei*
- Applications:** *Normal operations at Ali' i Place to April 30, 2008
Closed May 8 & 9
Re-opens May 12, 2008 at Kapolei*
- O'ahu District Office:** *Normal operations at Ali' i Place to April 30, 2008
Closed May 8 & 9
Re-opens May 12, 2008 at Kapolei*
- Loans:** *Normal operations at Ali' i Place to April 30, 2008
Closed May 8 & 9
Re-opens May 12, 2008 at Kapolei*
- Housing:** *Normal operations at Ali' i Place to April 30, 2008
Closed May 8 & 9
Re-opens May 12, 2008 at Kapolei*



Directions

From H-1 Freeway East:

1. Take the Makakilo/Kapolei Exit (Exit 2).
2. Turn left at the traffic signal (Makakilo Drive).
3. At the next traffic signal (Chili's is on your right), proceed straight on Fort Barrette Road.
4. Take the second left (at Kapolei High School) onto Kapolei Parkway.
5. Proceed 1.1 miles on Kapolei Parkway until you reach DHHL's office building (Hale Kalaniana'ole) on your left.

From H-1 Freeway West:

1. Take the Makakilo/Kapolei Exit (Exit 2).
2. Turn left at the traffic signal onto Kamokila Boulevard.
3. Turn right onto Fort Barrette Road (McDonald's and Chili's are on your left).
4. Take the second left (at Kapolei High School) onto Kapolei Parkway.
5. Proceed 1.1 miles on Kapolei Parkway until you reach DHHL's office building (Hale Kalaniana'ole) on your left.

For information on TheBus, routes, pickup times, etc. please call the Information Department at 808-848-5555 between 5:30 a.m to 10:00 p.m. daily.

New DHHL Directory

HAWAIIAN HOMES COMMISSION (HHC)

(808) 620-9504

Elaine Searle, *Commission Secretary*

Members of the HHC are appointed by the governor. The chairman is salaried and serves on a full-time basis. The other commission members serve without pay and are reimbursed for expenses only. Except for the island of Lāna'i, every island with Hawaiian home lands is represented. The commission holds monthly meetings and travels to each island annually. With public input, the commission sets policies for the Department of Hawaiian Home Lands.

OFFICE OF THE CHAIRMAN (OCH)

(808) 620-9501

Micah A. Kāne, *HHC Chairman*
Kaulana Park, *Deputy to the Chairman*
Robert Hall, *Executive Assistant*

OCH administers the work of the department.

INFORMATION & COMMUNITY RELATIONS OFFICE (ICRO)

(808) 620-9590

Lloyd Yonenaka, *Administrator*

ICRO is responsible for communicating the department's policies and programs to native Hawaiians, the general public and other governmental agencies.

HOME OWNERSHIP ASSISTANCE PROGRAM (HOAP)

(808) 620-9515

Sam Moku, *Program Manager*

HOAP's mission is to prepare and equip native Hawaiians for homeownership.

Continued on next page:

New DHHL Directory

Continued from page 3:

LAND DEVELOPMENT DIVISION (LDD)

(808) 620-9270

Larry Sumida, *Administrator*

LDD is responsible for developing trust lands for residential, agricultural and pastoral homesteading purposes.

LAND MANAGEMENT DIVISION (LMD)

(808) 620-9450

Linda Chinn, *Administrator*

LMD is responsible for the management of all DHHL non-homestead assets. Through its various land dispositions, LMD generates revenue to support homestead development projects.

PLANNING OFFICE (PO)

(808) 620-9480

Darrell Yagodich, *Administrator*

The PO prepares conducts research and planning studies required for the development of policies, programs and projects benefitting native Hawaiians.

FISCAL OFFICE (FO)

(808) 620-9560

James Pao, *Fiscal Officer*

The FO is responsible for providing accounting, fiscal services and internal control systems for the department including collecting lease and loan payments and other receivables.

ADMINISTRATIVE SERVICES OFFICE (ASO)

(808) 620-9530

Rodney Lau, *Administrative Services Officer*

ASO provides personnel, program planning and budgeting, information and communication systems, internal management assistance and other support services for the department.

HOMESTEAD SERVICES DIVISION (HSD)

(808) 620-9200

Robert Hall, *Acting Administrator*

HSD is responsible for processing applications for homestead leases, marketing new lease awards, managing programs and activities in leasing homestead lots for residential, agricultural and pastoral purposes and providing loans and financial assistance to homestead lessees.

Homestead Applications Branch (Applications)

(808) 620-9220

Kana'i Kapeliela, *Applications Officer*

Debra Kikuta, *Genealogist*

Applications is responsible for ensuring that applicants meet the blood quantum requirement. The branch is also charged with the maintenance of applicant records including all transactions involving applications.

Loan Services Branch (Loans)

(808) 620-9240

Dean Oshiro, *Loan Manager*

Loans administers the department's loan origination, loan servicing and loan collection programs.

Housing Project Branch (Housing)

(808) 620-9230

Isaac Takahashi, *Housing Specialist*

Housing is the "marketing arm" for homestead leases and awards. In collaboration with the Land Development Division, it processes applicants from the wait lists through financial qualification, contractor and house design selection, lot selection and lease execution.

District Operations Branch

(808) 620-9250

John Hirota, *District Operations Manager*

The District Operations branch is comprised of six district offices. These six offices provide frontline support and services to the homestead lessees, applicants and homestead community associations by managing homestead areas and by assisting in various departmental projects in their respective areas.

District Offices:

East Hawai'i District Office

(808) 974-4250

William Davis, *District Supervisor*

West Hawai'i District Office

(808) 887-6053

James Du Pont, *District Supervisor*

Moloka'i District Office

(808) 560-6104

George Maioho, *District Supervisor*

Maui District Office

(808) 760-5120

Mona Kapaku, *Acting District Supervisor*

O'ahu District Office

(808) 620-9250

Juan Garcia, *District Supervisor*

Kaua'i District Office

(808) 274-3132

Roland Licon, *District Supervisor*

New Procedure on Name Changes

As of April 14, 2008, the Department of Hawaiian Home Lands will process requests for a name change from a beneficiary applicant/lessee who was married outside of Hawai'i.

Previously, those married in some states, like Nevada which does not provide a procedure to publicly declare what names will be adopted and used after the wedding, were required to go through the formal name change process with the Lt. Governor's Office which requires publication

of the declaration of the new name in a newspaper of general circulation in the state of Hawai'i.

The following three items will need to be submitted to the department:

- Completed and signed DHHL Information Change Notification Form; and
- Copy of out-of-state marriage certificate; and

- Current government issued photo identification, such as driver's license, State identification, or military identification reflecting the name intended to be used by the beneficiary applicant/lessee.

Upon receipt of the items, the computer record and the lessee file will reflect the beneficiary applicant/lessee name change request.



Hui Ho'omalu Seeks Foster Families



On any given day in Hawai'i, there are keiki who are in need of safe and loving 'ohana. Recognizing that it is the kuleana (responsibility) of individuals, families, groups and communities to come together and mālama (to care for) our keiki, the State of Hawai'i Department of Human Services (DHS) awarded Partners in Development Foundation (PIDF) a master contract to form Hui Ho'omalu (a group to protect and shelter).

Infused throughout Hui Ho'omalu are the concepts of laulima (cooperation), partnership, team work, community building and resource sharing.

PIDF has partnered with Catholic Charities Hawai'i (CCH), Foster Family Programs of Hawai'i (FFP), and a consortium of other community providers to form Hui Ho'omalu, all working together to advance Hawai'i's foster care system. Collectively, the partnerships in Hui Ho'omalu represents the commitment to put first the needs of Hawai'i's keiki, 'ohana and communities.

Hui Ho'omalu strives to exemplify such values as aloha (love and compassion), lōkahi (unity and harmony), and ho'olaulima (to get to cooperate) as it works towards creating and implementing innovative strategies to better meet the needs of Hawai'i's keiki in foster care as well as the Foster/Resource Families who care for them.

Specifically, this statewide initiative addresses the identification, recruitment, screening, training, ongoing support and retention of resource families for children and families that are in the care of DHS.

There are two types of foster/resource family licensing conducted under PIDF's Hui Ho'omalu:

General Licensed: Refers to those families that are willing to foster any unrelated child. This type of licensing will be conducted through Partners in Development Foundation.



Child Specific Licensed: Refers to families who are either related to or have a prior relationship with the child. This type of licensing will be conducted through Catholic Charities Hawai'i.

Hui Ho'omalu recognizes the importance of foster/

resource families feeling supported once a child is placed in their home.

Foster Family Programs will be providing post placement supportive services to foster/resource families. This will include a warm line to provide information, referral and telephone support, support groups, and training opportunities.

Steps to Become a General License Foster/Resource Parent

- Call our intake number. Our worker will gladly speak to you regarding requirements and to obtain some general information. An application packet will be mailed to you.
- Complete the application packet and return it to PIDF.
- Our workers will contact you to sign up for a mandatory 18-hour foster/resource parent training in your community.
- A licensed social worker will conduct a home assessment with you and your family.

Congratulations! You are ready to welcome a child into your 'ohana. For more information contact:

Hui Ho'omalu
680 Iwilei Road, Suite 500
Honolulu, HI 96817
Phone: 808-441-1115

USDA Rural Development Offers 1% Home Repair Loans & Grants

DHHL is pleased to announce the U.S. Department of Agriculture (USDA) Rural Development Section (RDS) Section 504 loan/grant program for very-low income owner occupants of modest single-family homes in rural areas. Loans are available at an one percent (1%) interest rate, amortized over 20 years, for repairs to improve or modernize a home to make it safer or more sanitary, or remove health and safety hazards. The maximum repair loan amount is \$20,000.

For homeowners 62 years old and over who cannot repay a loan, a one-time grant is available in the amount of \$7,500 for removal of health and safety hazards, or remodeling of dwellings to make them accessible to household members with disabilities.

Eligible rural areas on DHHL homesteads are **O'ahu:** Waimānalo, Waikāne, Kapolei, Wai'anae, and Nānākuli; **Kaua'i:** Anahola and Kekaha; **Mau'i:** Waiehu Kou and Waiohuli; **Hawai'i:** Kona and Ka'ū, and all of **Moloka'i.**

The Section 504 loan/grant program is available for qualified owner occupants. For large repairs, homeowners may qualify for a combined loan and grant.

Please call the USDA Rural Development in your area for detailed information:

O'ahu: (808) 483-8600 ext. 355
Maui: (808) 871-5500 ext. 355
Kaua'i: (808) 245-9014 ext. 102
Hawai'i: (808) 933-8330
Moloka'i: (808) 553-5321

Changing mailing address?

Don't forget that you must notify (in writing) the Department of Hawaiian Home Lands of any changes in your mailing address in order to remain eligible for a Hawaiian Home Lands award. Complete the form below and mail it to:

State of Hawai'i
Department of Hawaiian Home Lands
P.O. Box 1879
Honolulu, Hawai'i 96805

We **must have** your **current** mailing address on file at all times. All notifications, including lease offerings, are made through the mail. After 12 months, the U.S. Postal Service will not forward mail to your new address. Please remember it is your responsibility to notify us in writing of any changes.

Please check status: Applicant Lessee Both Homestead Area _____

Print full name: _____

Last four SSN numbers: _____
Lease No.: _____

New mailing address: _____

Signature & date: _____

Telephone nos.: Home _____ Bus. _____ Cell _____

If any of the information printed on the address label is incorrect, please correct the information by using this form.



STATE DEPARTMENT OF HAWAIIAN HOME LANDS
POST OFFICE BOX 1879
HONOLULU, HAWAII 96805

PRESORTED
STANDARD
US POSTAGE PAID
HONOLULU, HI
PERMIT NO. 574

Return Service Requested

HIDA Recipient Achieves His Dream

Harry Brown, Jr. and his family were scheduled to move into their new home at Waiehu Kou Phase IV on Maui in March with the help of the Homestead Individual Development Account (HIDA) program.

Brown, wife Donna, and their 11-year-old son Kahiau are all originally from Maui. Over the years, Brown has been contacted by the Department of Hawaiian Home Lands (DHHL) for Waiehu Kou Phase II and III. The Browns deferred each offering.

“The timing wasn’t right prior to now,” explained Brown. “When Waiehu Kou Phase IV was offered, we decided to participate because now we’re ready--both financially and physically for our family to relocate to Maui. We are grateful for all of the assistance we received from Winona (Kauhane) at Hawaii Community Lending and are thankful for the HIDA program,” added Brown.

“All of this is for him,” said Brown as he pointed to his son. “We want to raise him at home in Maui,” he added. The Browns have been able to work with the developers of the project to accommodate the special needs of their son. They have been looking forward to their March move.

The HIDA program provided Brown and his family with a match of \$3.00 for every dollar he saved up to a maximum of \$10,000. Funding for the HIDA program is a result of a grant from the Native American Housing Assistance and Self Determination Act (NAHASDA) program with DHHL. Brown and his family participated in the program for six months.



Donna and Harry Brown pose with their 11-year-old son, Kahiau. The Browns were scheduled to move into their Waiehu Kou IV home in March.

“This program has made my dream of buying a home for me and my family a reality, said Brown.

The Council for Native Hawaiian Advancement, in partnership with Hawaiian Community Assets, developed the program to provide native Hawaiians of the Hawaiian Home Lands trust with funding to match their savings in order to help them achieve their goal of home ownership.

Financing Options for DHHL Lessees

Kāko'o Kaiaulu - Servicing our community

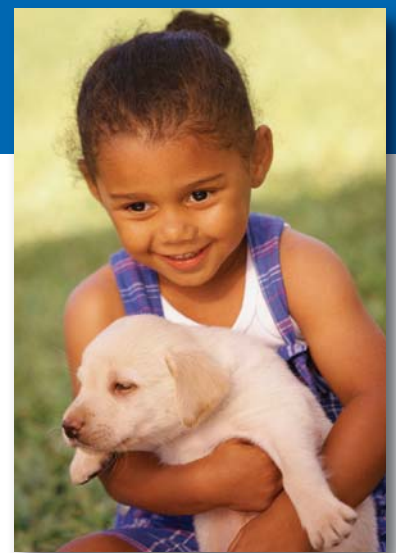
At Bank of Hawaii, we offer the widest range of financing options for Department of Hawaiian Home Land (DHHL) lessees. Our variety of programs are designed to provide lessees with expanded financing options. Call or visit us today to find out how these programs may work for you.

- ◆ FHA 247 ◆ FHA 184A ◆ Conventional



HIGHLIGHTS

- ◆ Purchase, rate term/cash-out refinance, and construction permanent financing
- ◆ Fixed rate mortgages up to a loan term of 30 years
- ◆ Flexible down payment options
- ◆ Flexibility on reserve requirements
- ◆ Primary residence, one unit properties, including Planned Unit Developments (PUD) on Hawaiian Home Lands



For more information, call one of our Loan Officers at a Bankoh Residential Loan Center listed below

Downtown 538-4786	Kahala 733-7447	Pearlridge 483-6565	Kapolei 693-1444	Kauai 632-0006	Kona 326-3996	Kamuela 854-2210	Hilo 933-6788	Kihei 875-8102	Kahului 871-8210	Lahaina 661-5367	Wailuku 243-8188
----------------------	--------------------	------------------------	---------------------	-------------------	------------------	---------------------	------------------	-------------------	---------------------	---------------------	---------------------