

State of Hawai'i
DEPARTMENT OF LAND AND NATURAL RESOURCES
Division of Forestry and Wildlife
Honolulu, Hawai'i 96813

July 22, 2009

Chairperson and Members
Board of Land and Natural Resources
State of Hawai'i
Honolulu, Hawai'i

Land Board Members:

SUBJECT: REQUEST TO DESIGNATE THE OHAI LOOP TRAIL AND
OVERLOOK AS A NA ALA HELE "PROGRAM TRAIL" AND
FEATURE WITHIN THE MAUI NA ALA HELE TRAIL AND
ACCESS PROGRAM INVENTORY.

SUMMARY:

This submittal requests that the Board designate the Ohai Loop Trail and Overlook as a new Na Ala Hele "Program Trail" and feature within the Maui Na Ala Hele Trail and Access Program inventory. The trail and overlook are located within the West Maui Forest Reserve now under the jurisdiction of the State of Hawaii, Division of Forestry and Wildlife Tax Map Key: 2-3-1-003:006, Kahakuloa, Maui.

DISCUSSION:

In accordance with Hawaii Administrative Rules - Chapter 130:

HAR § 3-130-12 General purpose and scope. The Na Ala Hele program shall be responsible for maintaining an inventory of trails and accesses in the State of Hawaii. Program trails shall be selected from among the inventoried trails. Program trails are subject to the trail use rules set forth in subchapters 4, 5, and 6. The Na Ala Hele program shall maintain a list of program trails, as it may be amended from time to time, and maps delineating and defining the trail location and route.

HAR § 13-130-13 Program trail and access designation. The board shall periodically designate the inclusion of a trail or access selected from among the inventoried trails and accesses upon consultation with the division, the Na Ala Hele staff, and the respective island advisory council from which a particular trail or access is located.

The Na Ala Hele staff and volunteers constructed the Ohai Loop Trail according to Na Ala Hele's trail and access development guidelines. The trail is suitable for open public use. The Overlook was constructed by a private construction company after winning the

bid award through utilization of the Hawaii Electronic Procurement System (HePS) for small purchases

An Environmental Assessment (EA) was completed in January 2004 with a Finding of No Significant Impact (FONSI). The EA contains a flora and fauna survey, archaeological inspection, and cultural survey. All construction activities incorporated the DOFAW Best Management Practices for Maintaining Water Quality as applicable.

Required Consultation:

Na Ala Hele staff has consulted with all the other Maui DOFAW and Na Ala Hele Administration staff regarding this designation. Division staff had no objections and offered no comments besides asking if Na Ala Hele needed help with maintenance.

On June 17, 2009 the Maui Na Ala Hele advisory council voted unanimously for adding the Ohai Loop Trail and Overlook to the program trail inventory.

Trail Inventory Data:

Traditional name: Ohai Loop Trail and Overlook
Owner: State of Hawaii
Manager: DOFAW
Start Point: parking area at Poelua Point in the West Maui Forest Reserve
End Point: Trail loops around to end at same location
Length: 1.2 miles
Inventory #: MA 04 009

RECOMMENDATION

1. That the Board approves designating the Ohai Loop Trail and Overlook as a new Maui Na Ala Hele Program Trail and Feature within the Maui Na Ala Hele Trail and Access Program inventory.

Respectfully submitted,



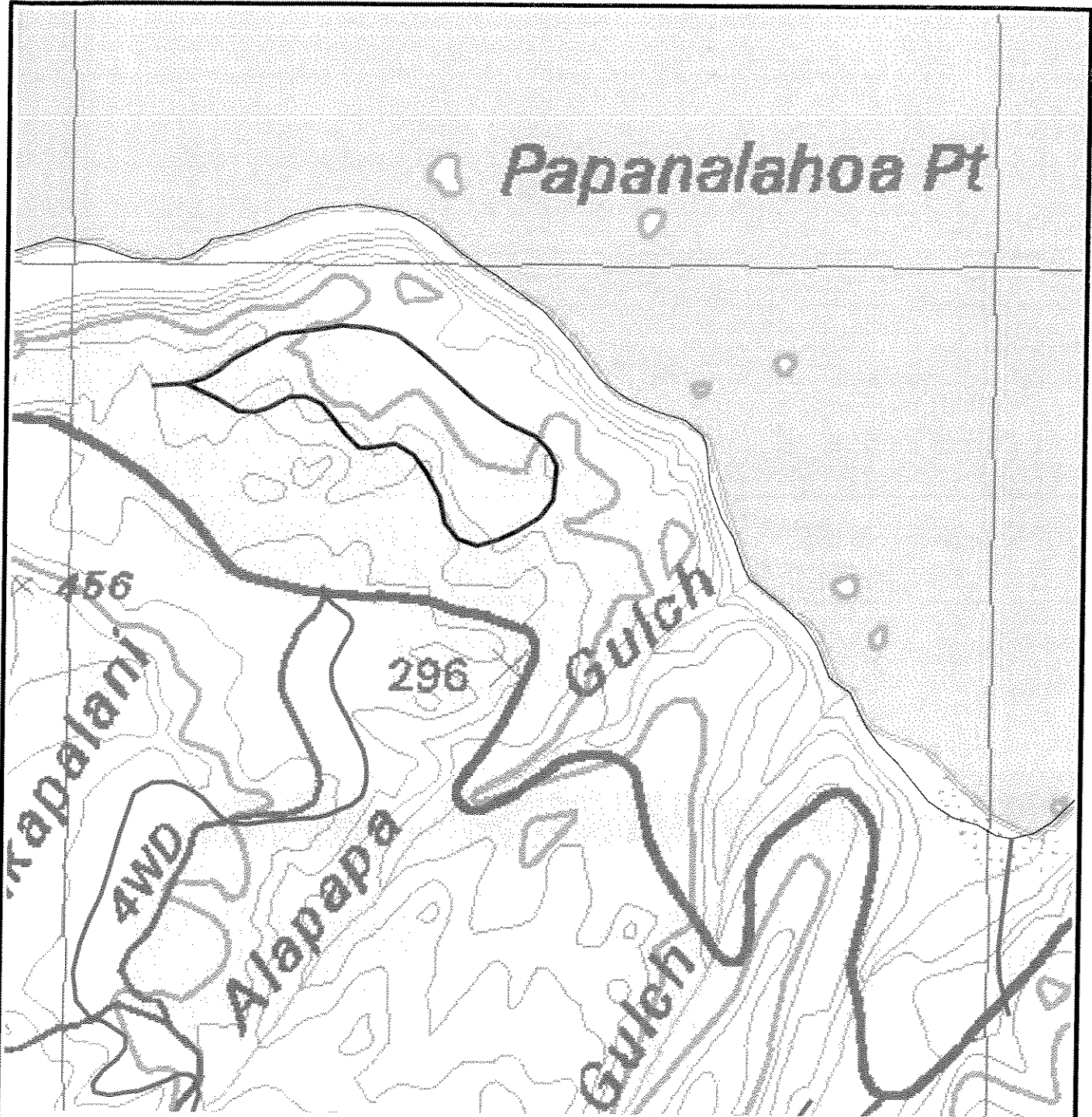
PAUL J. CONRY, Administrator
Division of Forestry and Wildlife

Attachment 1 - Ohai Loop Trail Map

APPROVED FOR SUBMITTAL:



LAURA H. THIELEN, Chairperson



— Ohai Loop Trail