

State of Hawai`i
DEPARTMENT OF LAND AND NATURAL RESOURCES
Division of Forestry and Wildlife
Honolulu, Hawai`i 96813

July 22, 2009

Chairperson and Members
Board of Land and Natural Resources
State of Hawai`i
Honolulu, Hawai`i

Land Board Members:

SUBJECT: REQUEST TO DESIGNATE THE KAHAKAPAO LOOP TRAIL
AS A NA ALA HELE "PROGRAM TRAIL" WITHIN THE
MAUI NA ALA HELE TRAIL AND ACCESS PROGRAM
INVENTORY.

SUMMARY:

This submittal requests that the Board designate the Kahakapao Loop Trail as a new Na Ala Hele "Program Trail" within the Maui Na Ala Hele Trail and Access Program inventory. The trail is located within the Makawao Forest Reserve now under the jurisdiction of the State of Hawaii, Division of Forestry and Wildlife Tax Map Key: 2-2-4-016, Makawao, Maui.

DISCUSSION:

In accordance with Hawaii Administrative Rules - Chapter 130:

HAR § 3-130-12 General purpose and scope. The Na Ala Hele program shall be responsible for maintaining an inventory of trails and accesses in the State of Hawaii. Program trails shall be selected from among the inventoried trails. Program trails are subject to the trail use rules set forth in subchapters 4, 5, and 6. The Na Ala Hele program shall maintain a list of program trails, as it may be amended from time to time, and maps delineating and defining the trail location and route.

HAR § 13-130-13 Program trail and access designation. The board shall periodically designate the inclusion of a trail or access selected from among the inventoried trails and accesses upon consultation with the division, the Na Ala Hele staff, and the respective island advisory council from which a particular trail or access is located.

The Na Ala Hele staff and volunteers constructed the Kahakapao Loop Trail according to Na Ala Hele's trail and access development guidelines. The trail is suitable for open public use, including hiking, bicycles, and equestrian use. An Environmental Assessment

(EA) was completed in June 2003 with a Finding of No Significant Impact (FONSI). The EA contains a flora and fauna survey, archaeological inspection, and cultural survey.

Required Consultation:

Na Ala Hele staff has consulted with all the other Maui DOFAW and Na Ala Hele Administration staff regarding this designation. Division staff had no objections and offered no comments besides asking if Na Ala Hele needed help with maintenance.

On June 17, 2009 the Maui Na Ala Hele advisory council voted unanimously for adding the Kahakapao Loop Trail to the program trail inventory.

Trail Inventory Data:

Traditional name: Kahakapao Loop Trail
Owner: State of Hawaii
Manager: DOFAW
Start Point: locked gate within the Makawao Forest Reserve
End Point: Trail loops around to end at same location
Length: 5.7 miles
Inventory #: MA 11 001

RECOMMENDATION

1. That the Board approve designating the Kahakapao Loop Trail as new Maui Na Ala Hele Program Trails within the Maui Na Ala Hele Trail and Access Program inventory.

Respectfully submitted,



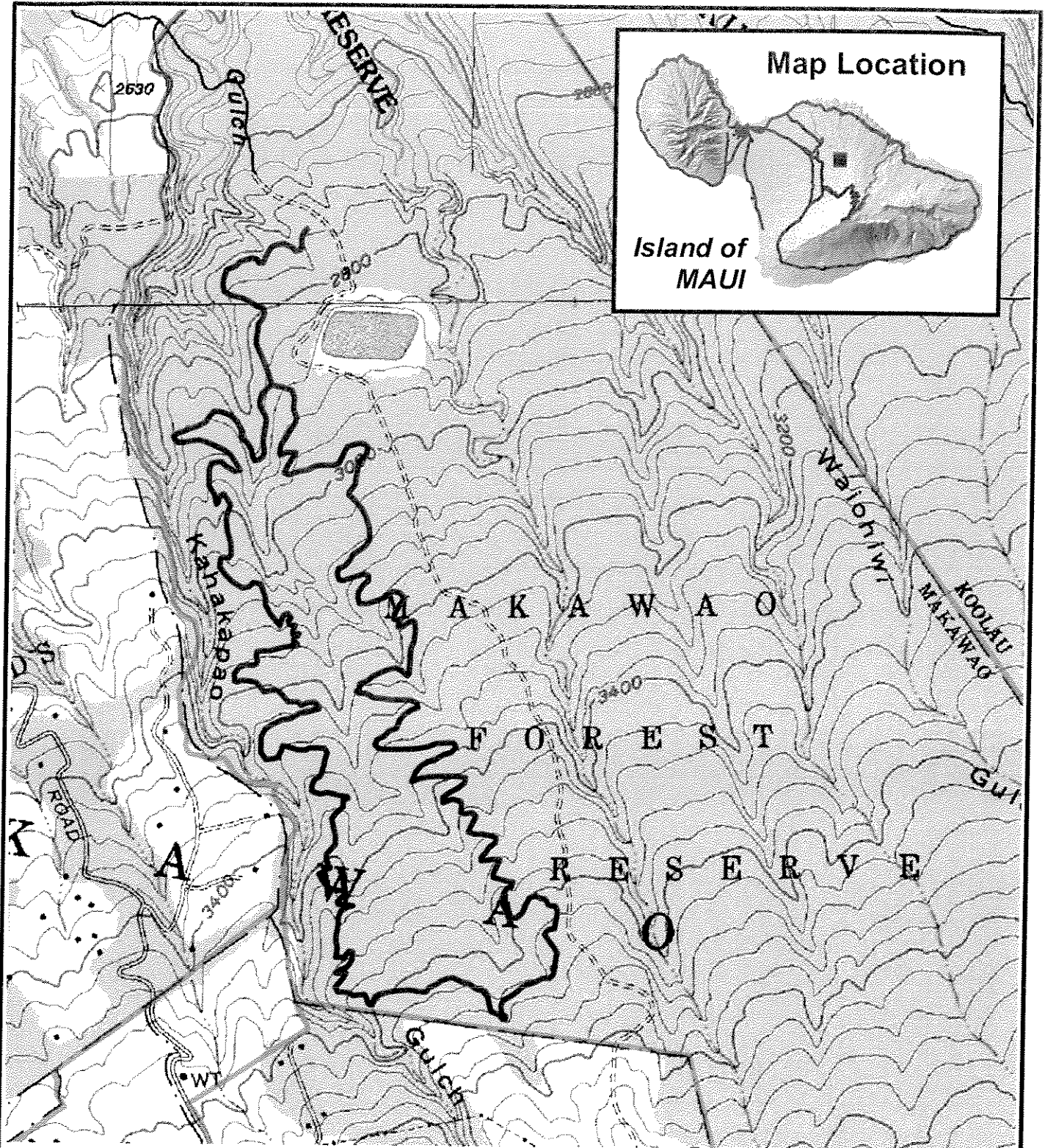
PAUL J. CONRY, Administrator
Division of Forestry and Wildlife

Attachment 1 - Kahakapao Loop Trail Map

APPROVED FOR SUBMITTAL:



LAURA H. THIELEN, Chairperson



Kahakapao Loop Trail

Trail No. MA 11 001



State of Hawaii
 Department of Land and Natural Resources
 Division of Forestry and Wildlife
 Map No. FW - 0853 (07/2009)