



## DEPARTMENT OF LAND AND NATURAL RESOURCES

### News Release

**LINDA LINGLE**  
GOVERNOR

---

LAURA H. THIELEN, CHAIRPERSON  
Phone: (808) 587-0320  
Fax: (808) 587-0390

---

For Immediate Release: November 6, 2009

#### **DLNR INSTALLS SIGNS FOR NEW KAHEKILI HERBIVORE FISHERIES MANAGEMENT AREA**

KAHULUI -- The Department of Land and Natural Resources (DLNR) this week installed signs to mark the new Kahekili Herbivore Fisheries Management area at north Ka'anapali, and department aquatic biologists are continuing their educational outreach to the public, land owners, and resort operations about the importance of adhering to new rules for this area.

Since July 2009, the Kahekili Herbivore Fisheries Management Area at north Ka'anapali from Keka'a Point (Black Rock) to Honokowai Park is now under a new rule that prohibits the take of certain herbivorous fishes (such as surgeonfishes, parrotfishes, rudderfishes) and sea urchins.

Studies by marine scientists have found that overgrowth of coral reefs by algae is a severe and growing problem in Hawai'i. Kane'ohe Bay, Waikiki, Maunaloa Bay, and much of west and south Maui are all areas where previously healthy reefs have become largely dominated by algae.

Herbivorous fishes are essential to tropical reefs because, once established, algae prevent new coral from competing for space on reefs, converting coral-dominated habitats to algae-dominated habitats. In short, maintaining healthy populations of herbivorous fishes on the world's reefs is critical to reef conservation.

"Establishing this herbivore management area is an immediate management action that we are using to intervene in the rapid coral reef degradation that has been documented in this area," said Laura H. Thielen, DLNR chairperson.

"We are testing this approach and asking the public's cooperation, to confirm that protecting herbivores is one way to improve coral reef health by enhancing the ecological services -- that is, control of algae -- provided by herbivorous fish and urchins," Thielen said.

The new administrative Hawai'i Administrative Rule (HAR), Chapter 13-60.7, Kahekili Herbivore Fisheries Management Area, Maui may be viewed and downloaded from the Division of Aquatic Resources website: [www.hawaii.gov/dlnr/dar](http://www.hawaii.gov/dlnr/dar).

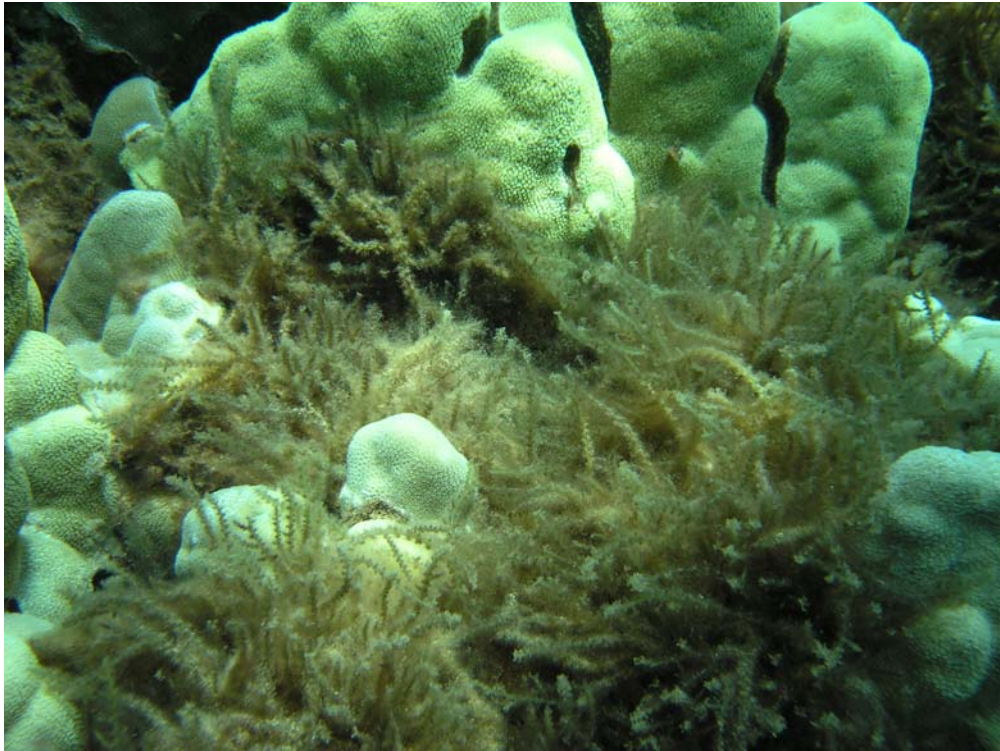
# # #

For more information news media may contact:  
Deborah Ward  
DLNR Public information specialist

Sign at Mala Wharf  
Close up of sign.

Parrotfish helps keep the coral clear.  
Seaweed overtaking coral head.

Photos courtesy Division of Aquatic Resources  
(see below)



Seaweed overtaking coral head.



Parrotfish helps keep the coral clear.



Close up of sign.



Sign at Mala Wharf