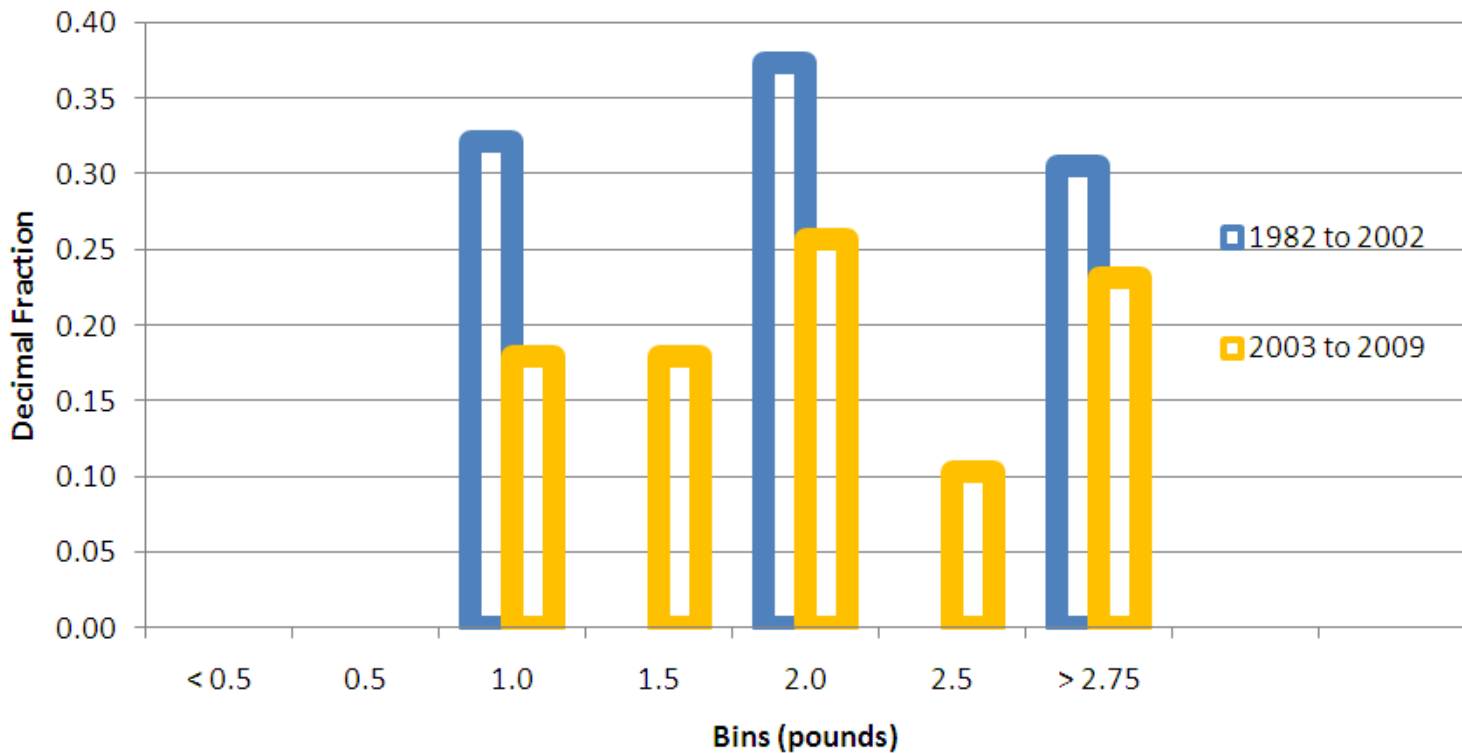


- **Moano Kali, blue goatfish, *Parupeneus cyclostomus***
- Oahu (5853 records, 28 percent of statewide records).
- Oahu Inshore Handline (3010 records, 14 percent of statewide records).
- From 1982 to 1991 a total of 2205 fish reported.
- From 1992 to 2009 a total of 805 fish reported.
- Average catch rate 111 fish per year over time series.
- Average catch rate since 2003 is 29 fish per year

# Species Summaries from Reported Commercial Catches

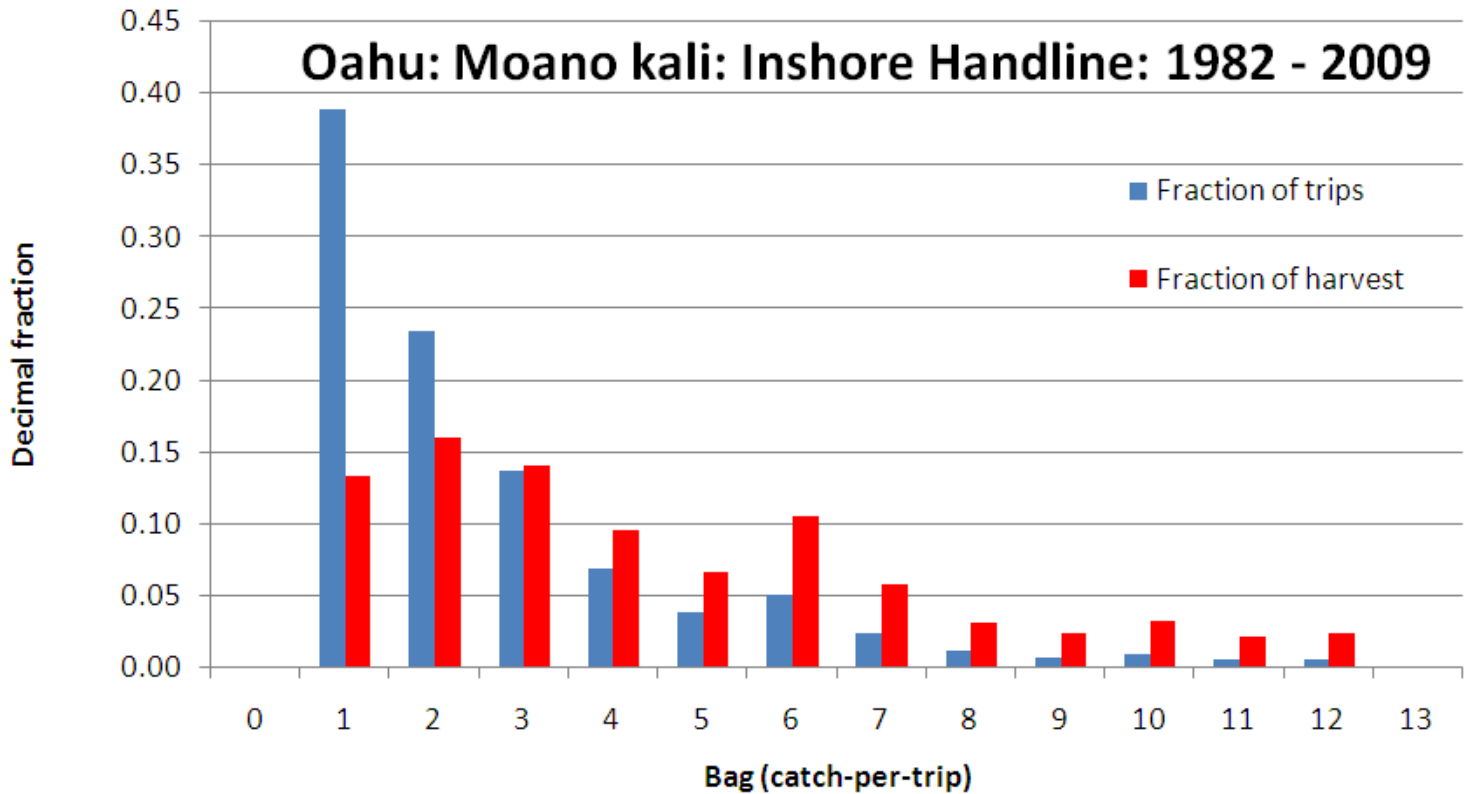
Species	Island	Gear	No. Records	Percent of State Total	Years	Trend	Slope	2009 fish per day	Fish per year	Size lbs
Moano kali	Oahu		5,853	28						
	Oahu	Inshore handline	3,010	14	1982 to 2009	Sm. decrease	-0.00004	2.7		
	Oahu	Inshore handline	2,205		1982 to 1991				111	1 - 2
	Oahu	Inshore handline	805		1992 to 2009				29	1 - 3

# Oahu: Moano Kali: Inshore Handline



L50 = 0.99 lbs

# Oahu: Moano kali: Inshore Handline: 1982 - 2009



# Oahu: Moano kali: Inshore Handline

◇ predicted

Moano kali per report (per trip)

