

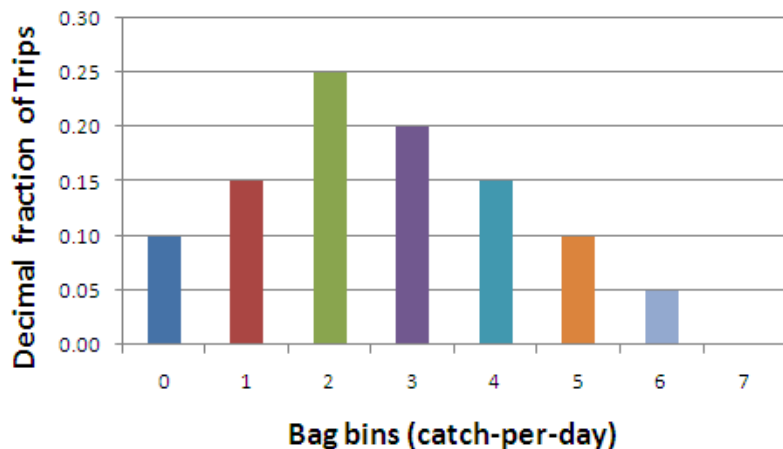
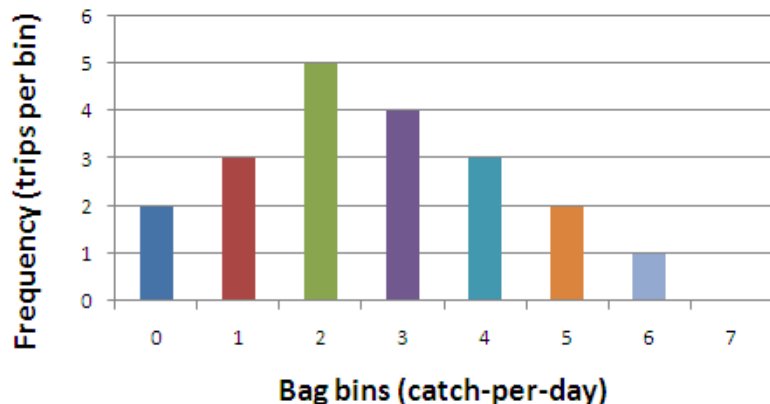
The following pages contain examples of how data is presented during the Oahu data presentation public meetings (September 2009) and in data files available at this link. Trips and harvest are totaled for fishers catching (bagging) one through seven fish per day and presented as a frequency histogram and a decimal fraction histogram plot to the right. Decimal fraction histogram plots are used throughout the data presentation for individual species and gear types.

Trips Grouped by Catch-per-day

Example Fishing Catch Data

Fishing Trip	Catch	Catch-per-day Bag bins (No.)	Frequency Trips per bin	Decimal fraction
1	0	0	2	0.10
2	0	1	3	0.15
3	1	2	5	0.25
4	1	3	4	0.20
5	1	4	3	0.15
6	2	5	2	0.10
7	2	6	1	0.05
8	2	7	0	0.00
9	2			
10	2	sum =	20	
11	3			
12	3			
13	3			
14	3			
15	4			
16	4			
17	4			
18	5			
19	5			
20	6			

Example Plots



Total Harvest Grouped by Catch-per-day

Fishing Trip	Catch	Catch-per-day Bag Bins (No.)	Frequency Trips per bin	Harvest Subtotal	Decimal Fraction of Trips	Decimal Fraction of Harvest
1	0	0	2	0	0.10	0
2	0	1	3	3	0.15	0.06
3	1	2	5	10	0.25	0.19
4	1	3	4	12	0.20	0.23
5	1	4	3	12	0.15	0.23
6	2	5	2	10	0.10	0.19
7	2	6	1	6	0.05	0.11
8	2	7	0	0	0	0
9	2					
10	2	Total=	20	53		
11	3					
12	3					
13	3					
14	3					
15	4					
16	4					
17	4					
18	5					
19	5					
20	6					
Total=	53					

