

SAFETY AND SECURITY MEASURES

Due to national security interests, the implementation of these security zones is necessary for the protection of the public, port facilities, and waterways of the Hawaiian Islands. The security zones are located in the waters adjacent to the islands of Oahu, Maui, Hawaii, and Kauai, Hawaii. These zones will vary in size and shape depending on the location and the protective scope of the zone. All zones will, however, extend from the surface of the water to the ocean floor.

The security zones will involve two categories. **CATEGORY ONE** security zones are continuously activated and enforced. **CATEGORY TWO** security zones are activated and enforced only upon the occurrence of a specific event, threat, or security incident, such as an increase in the Maritime Security (MARSEC) level to II or III. MARSEC information can be found in 33 CFR 101.

Any violation of the security zones may result in the receipt of civil penalties (fines of up to \$32,500 per violation, where each additional day of a violation is a separate violation), or criminal penalties (imprisonment for up to 10 years and a fine of up to \$10,000), seizure and forfeiture of your vessel, and other administrative sanctions authorized by law.

SECURITY ZONE ENFORCEMENT

While the security zones are activated and enforced, persons and vessels are prohibited from entering them without the express permission of the Captain of the Port. The Captain of the Port will notify the public of the activation and enforcement of these security zones as well as the deactivation and suspension of the security zones. The Captain of the Port or his or her representatives will enforce these security zones. The Captain of the Port may be assisted by other federal or state agencies to the extent permitted by law.

Persons desiring to transit the areas of the security zones may contact the Captain of the Port at the Coast Guard command center telephone number (808) 842-2600 or on VHF channel 16 (156.8 Mhz) to seek permission to transit the area. Written requests may be submitted to the Captain of Port, U.S. Coast Guard Sector Honolulu, 400 Sand Island Access Road, Honolulu, Hawaii 96819, or faxed to (808) 842-2649. If permission is granted, all persons and vessels must comply with the instructions of the Captain of the Port or his or her representative.

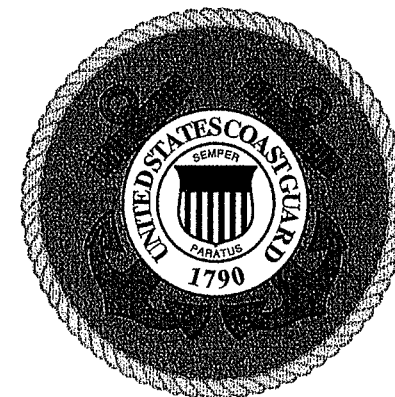
**IF YOU OBSERVE SUSPICIOUS
MARITIME ACTIVITIES CALL
THE NATIONAL RESPONSE
CENTER AT 1-800-424-8802.**



SECURITY ZONES OAHU, HAWAII

MEASURES TO INCREASE THE PUBLIC SAFETY AND TO REDUCE THE THREAT OF SABOTAGE OR TERRORIST ACTS AGAINST PERSONNEL AND PROPERTY

United States Department of Homeland Security



United States Coast Guard Sector Honolulu

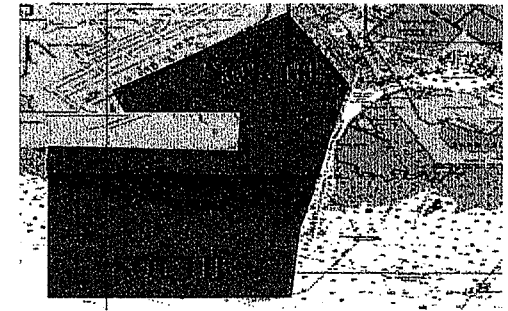
400 Sand Island Parkway
Honolulu, HI 96819
(808) 842-2600
www.homeport.uscg.mil



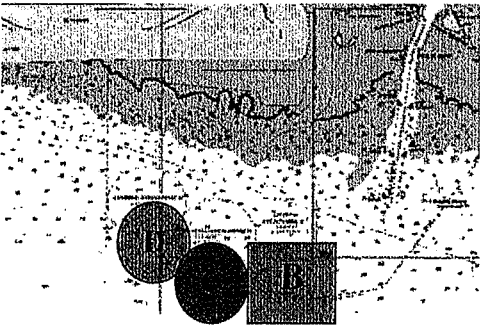
Honolulu Harbor and entrance channel starting at channel Buoys no. 1&2 and ending at fixed day beacons no. 14&15

Category One Zones

The following security zones are **Category one** zones: Honolulu Harbor, Honolulu International Airport North Section, and the Tesoro and Chevron offshore moorings. These security zones are continuously activated and enforced.



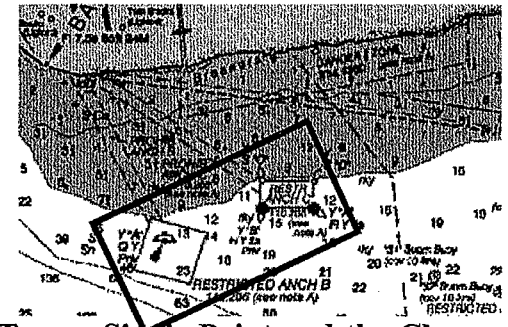
Honolulu International Airport (North and South Sections) all waters between the airport and the western edge of Kalihi Channel.



Anchorages B, C, and D- 100 yards beyond and vessel greater than 300 GT

Category Two Zones

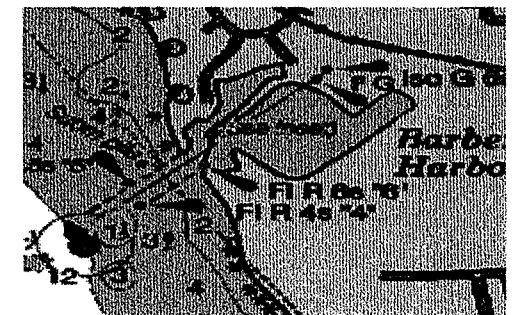
The following security zones are **Category two**: Honolulu Anchorages B, C, & D, Kalihi Channel and Keehi Lagoon, Honolulu International Airport South Section, and Barber's Point Harbor. These zones will be activated and enforced when there is an event. For more information on security zone enforcement check the Coast Guard Sector Honolulu web page.



Tesoro Single Point and the Chevron Conventional Buoy Moorings.



Kalihi Channel and Keehi Lagoon



Barber's Point Harbor between Channel light no. 6 and the jetty day point beacon.

You must contact the Coast Guard Command Center via telephone at (808) 842-2600 or via VHF channel 16 (156.8 MHz) to obtain permission to enter an activated security zone