

State Department of Transportation
Honoapiilani Highway Realignment Project

Lahaina Bypass – Phase 1B-1

Public Information Meeting

April 2, 2009

Lahaina Civic Center



STATE OF HAWAII
Department of Transportation

Meeting Agenda

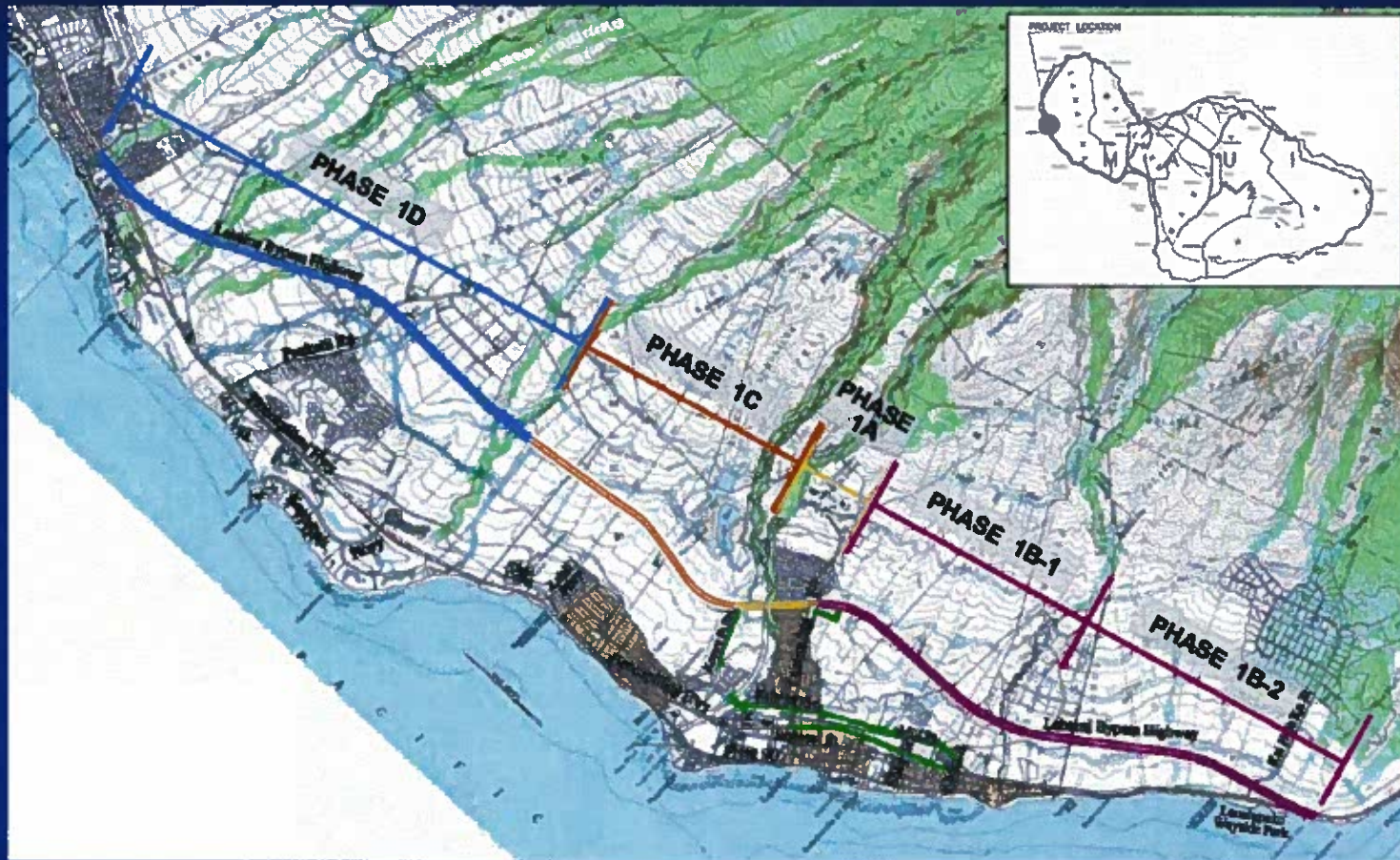
- Provide an update on Phase 1A construction
- Share information regarding Phase 1B-1
- Answer questions, receive feedback



Overview

- The Lahaina Bypass is a high priority for West Maui and the DOT
- Upon completion, it will alleviate traffic congestion, increase safety and improve mobility throughout West Maui
- The State Highway Modernization Plan will accelerate the construction schedule for subsequent phases

Aerial Map



Phase 1A



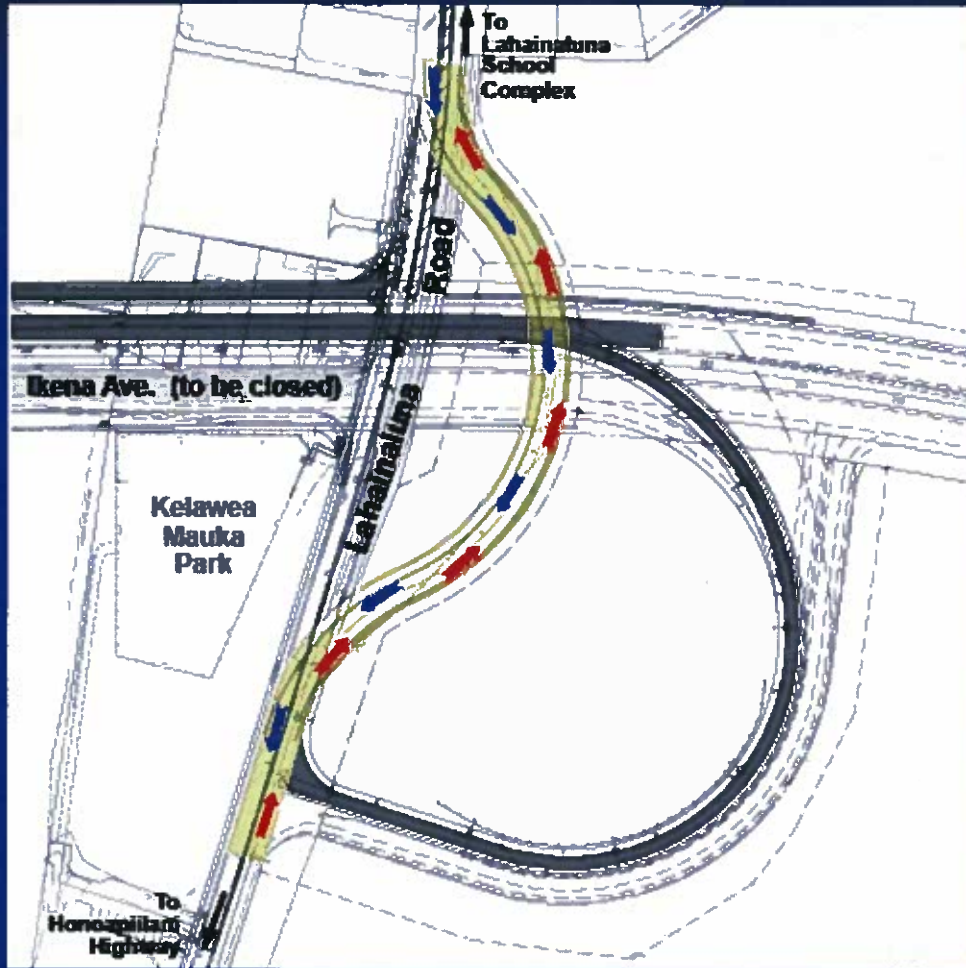
Phase 1 A: Aerial Map



Phase 1 A: Current Work

- Kelaweia Mauka Park Improvements
 - Water line currently being installed
 - Construction of ramps and maintenance roads started
- Temporary Detour Road
 - Paving completed
 - Temporary water lines in place; will be connected once road is opened
 - Opened on March 31

Phase 1A: Temporary Detour Road



Phase 1 A: Upcoming Schedule

- March 31: Closure of Ikena Ave. from Lahainaluna Rd. to north end of Kelaweia Mauka Park
- April: Begin excavation for Lahainaluna Grade Separation Structure
- May: Begin construction of Lahainaluna Grade Separation Structure (7 month duration)
- June/July: Complete closure of Ikena Ave.
- August/September: Anticipated start of construction north of Kahoma Stream



Phase 1B-1



Phase 1B-1: Project Team

- Engineering: Austin, Tsutsumi & Associates
- Archaeology: Cultural Surveys Hawaii
- Outreach: Communications Pacific



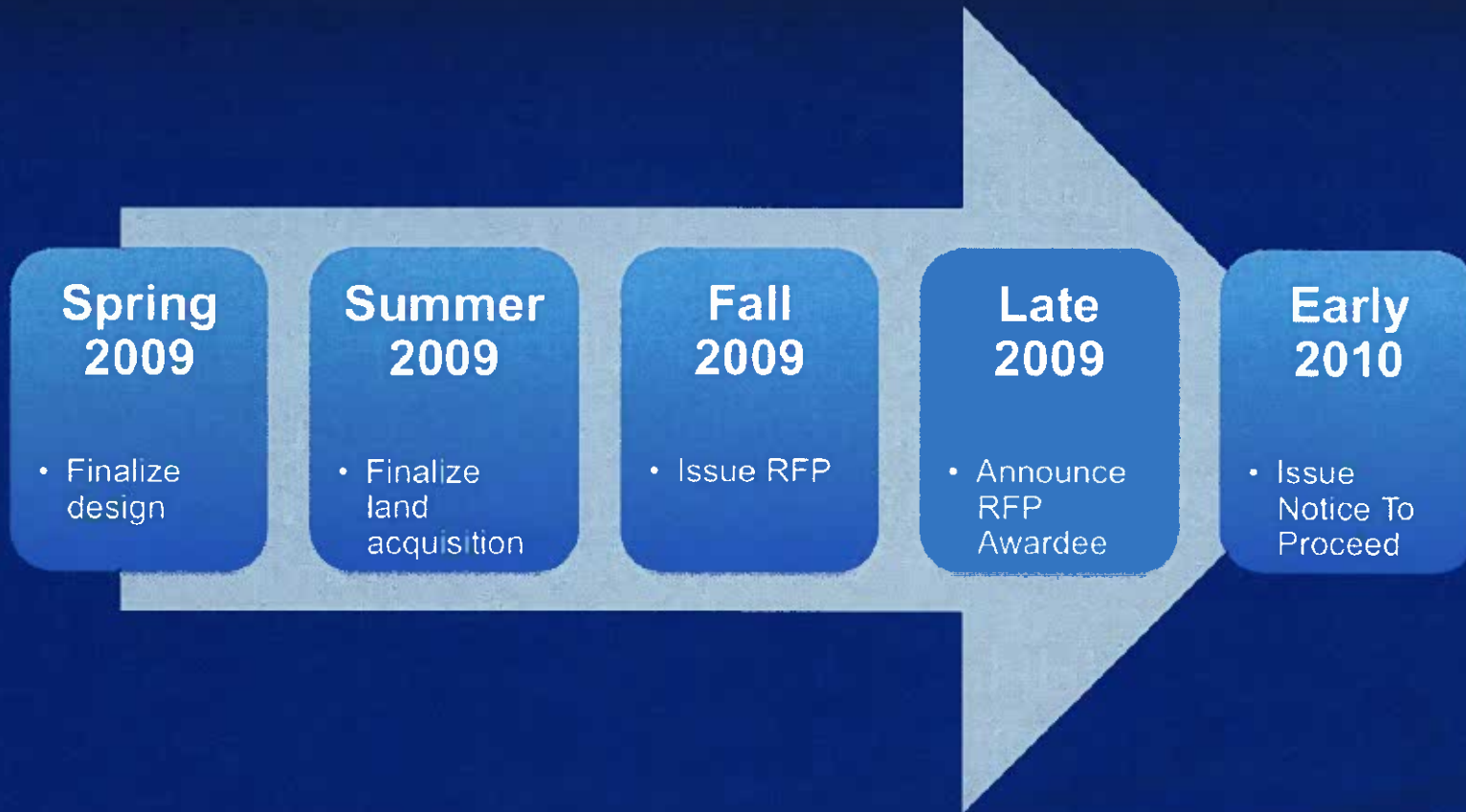
Phase 1 B-1: Overview

- Area: Lahainaluna Road to Hokiokio Place
- Length: Approximately 1.7 miles
- Cost: \$45 million
- Construction: Start in early 2010 and be completed around late summer 2011

Phase 1 B-1: Aerial Map



Phase 1B-1: Anticipated Timeline



Phase 1 B-1: Archaeology

- Original Archaeological Inventory Survey (AIS) conducted in 1991 by PHRI, Inc.
- DOT recently embarked on a good faith effort to revisit corridor alignment to search for possible additional sites
- Cultural Surveys Hawaii has identified two previously undocumented sites
 - CSH 1 and 2: boundary wall and agricultural terrace



Phase 1 B-1: Archaeology



CSH 1: Boundary Wall



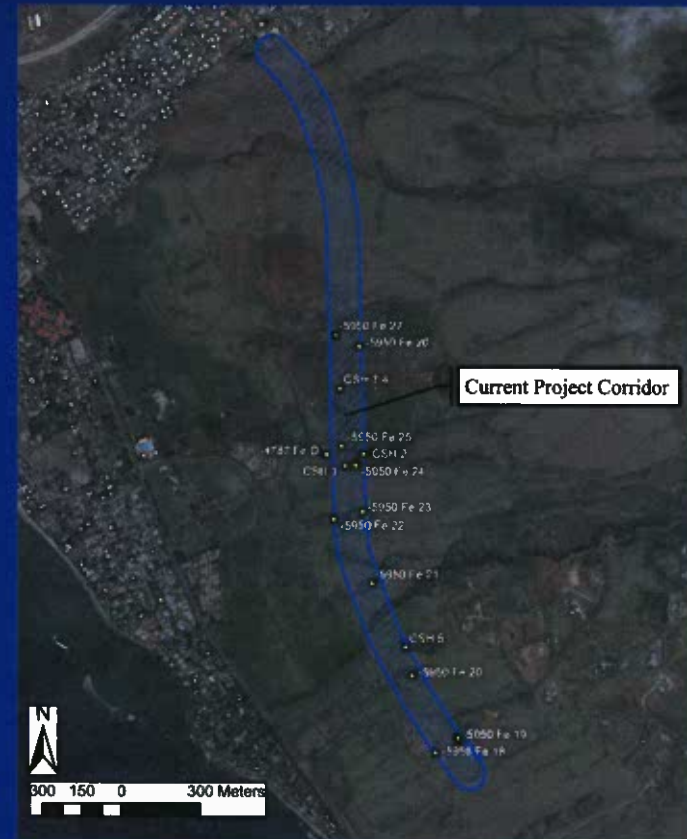
Phase 1 B-1: Archaeology



CSH 2: Agricultural terrace

Phase 1 B-1: Archaeology

- Field Inspection work is ongoing
- Preliminary findings:
 - Additional “push-piles”
 - Plantation-era infrastructure
- Final report will be submitted to State Historic Preservation Division
 - Will include recommendations



Phase 1B-1: Current Work

- Project design
 - Right-of-Way alignment has been modified to avoid archaeological sites
 - Does not require revised EA like Phase 1A
- Archaeological field work
- Geotechnical testing (ground assessment)

Phase 1 B-1: Outreach

- Dialogue is ongoing with descendants
- Project team has been meeting with business, social and civic organizations since December
- Team welcomes opportunity to present updates to other interested parties
- What have we heard? What have we learned?

Phase 1B-1: Comments

- Residents have been anxiously awaiting the bypass and are enthused that construction has finally begun
- Community members see a clear need for the bypass
- Safety of children and seniors are top-of-mind



Phase 1 B-1: Questions

- Who are you required to meet with?
- What environmental processes are required?
- Are ceded lands being acquired?
- How will you acquire lands along the corridor?
- Is the schedule confirmed?

Mahalo

DOT – Maui District: 873-3535

DOT – Design Branch: 692-7544

Phase 1A Construction Hotline: 442-2264

