



**LAHAINA BYPASS – PHASE 1A
(HONOAPIILANI HIGHWAY REALIGNMENT)
Future Keawe Street Extension To Lahainaluna Road
Federal Aid Project No. HN-030-1(35)R**

PROJECT SUMMARY

April 30, 2008

PROJECT BACKGROUND

The State of Hawaii, Department of Transportation (DOT) Highways Division is implementing Phase 1A of the Honoapiilani Highway Realignment, otherwise known as the Lahaina Bypass. The Phase 1A project:

- Comprises an approximately 0.5 mile section of the entire Lahaina Bypass corridor; and
- Follows the alignment of Ikena Avenue and extends from Lahainaluna Road to the future extension of Keawe Street.

The project's background and status are as follows:

1. Design-Build team began design work in February 2007 with earthwork originally planned to begin in August 2007.
2. During archaeological data recovery work as part of the project's design, an archaeological site was identified as an inadvertent find within the highway corridor. Site No. 6277 comprises a large agricultural complex. (see below)



3. Due to the inadvertent finding, the project schedule was modified to comply with the following regulatory requirements:
 - a. Section 4(f) of the U.S. Department of Transportation Act
 - Consider alternatives that avoid use of resources (ex. historic site, parks)
 - Identify other feasible and prudent alternatives, and include planning to minimize harm to resource
 - b. Section 106 of the National Historic Preservation Act
 - Consider project effects on historic properties
 - Consult with interested parties to help assess project effects, such as the State Historic Preservation Division, County agencies, Native Hawaiian organizations, and public
4. Current work to address compliance with these regulations includes:
 - a. Conducting archaeological fieldwork on Site 6277;
 - b. Consulting with agencies, organizations, and individuals regarding Site 6277; and
 - c. Developing realignment alternatives, and evaluating whether feasible and prudent.

REALIGNMENT ALTERNATIVES

Several realignment alternatives were identified and evaluated with respect to avoidance, feasibility and prudence. This process involved the following steps:

1. Established the following criteria for the evaluation of realignment alternatives:
 - a. Meet the project's purpose and need



- b. Meet design standards and requirements
 - c. Avoid effects on Site 6277 and other potential historic sites protected under Section 4(f)
 - d. Minimize effects on community, such as the displacement of residences and businesses
 - f. Minimize effects on current Lahaina Bypass corridor.
2. Identified and considered several alternatives. Those not prudent nor feasible were eliminated from further consideration.
 3. Developed alternatives based upon modifications to original alignment.
- The alternatives identification, development, and evaluation process resulted in two viable alternative alignments, including:
1. Ikena Avenue Alignment with Modified Extension (see Attachment)
 - Original Phase 1A Alignment with a makai routed extension north of the subdivision
 2. Original Ikena Avenue Alignment (see Attachment) if avoidance under Section 4(f) is not feasible and prudent in the first alternative
 - Original alignment planned for Phase 1A
 - Would require addressing mitigation measures for Site 6277
- 1) Conduct archaeological survey of corridor to identify presence of historic sites.
 - 2) Prepare an Environmental Assessment to assess probable impacts from the new makai segment.
 - 3) Continue consulting with interested parties, agencies, organizations, and the public regarding the makai extension segment.
 - 4) Conduct a public informational meeting to present the results of the assessment studies.
- b. Original Ikena Avenue Alignment
 - 1) Complete assessment of archaeological field work and data collected (Site 6277).
 - 2) Evaluate project impacts to site and identify potential mitigation measures.
 2. Complete Environmental Assessment process and evaluate results for the two alternatives.
 3. Decision on selected alignment is anticipated by the end of 2008.
 4. Conduct public informational meeting to update construction information.

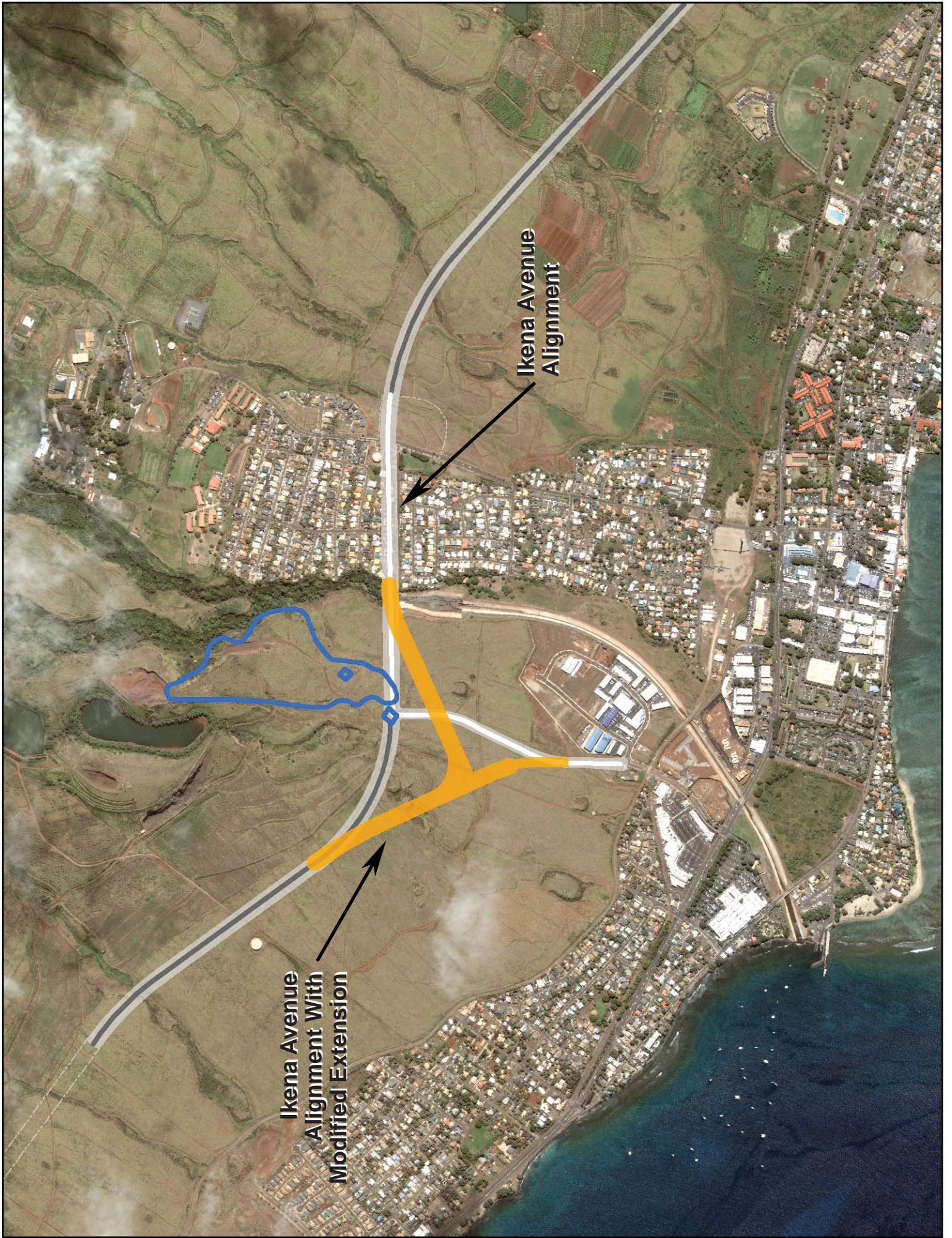
NEXT STEPS

Based on the alternatives currently under consideration, the following steps will be taken:

1. Conduct additional studies to evaluate the feasibility of the alternatives.
 - a. Ikena Avenue Alignment with Modified Extension

Contact Information:

Mr. Edwin H. Sniffen, P.E.
Highways Division
Hawai'i State Department of Transportation
601 Kamokila Boulevard, Room 688
Kapolei, Hawai'i 96707
Telephone: 808.692.7544
Email: edwin.h.sniffen@hawaii.gov



Ikena Avenue Alignment

Ikena Avenue Alignment With Modified Extension