

**STAFF SUMMARY OF DATA SUBMITTED FROM THE MILITARY AND
UNIVERSITIES FOR USE IN THE NON-PERMANENT POPULATION
ADJUSTMENT TO THE 2010 CENSUS DATA**

The 2011 reapportionment project staff asked for non-permanent population data from the historical data sources to accomplish the constitutionally required population adjustment in determining the permanent resident population.

The staff requested the military through USPACOM to provide a data set of Active Duty personnel and dependents who declare a state other than Hawaii as their home state. The data was provided segregated by U.S. Postal Zip Codes.

USPACOM provided the following counts:

Active Duty:

- Declares state other than Hawaii as home state. 47,082
- Declares Hawaii as their home state 933
- Active Duty dependents in Hawaii 58,949

We are in the process of evaluating the data to determine where these people live. We are then trying to place them in Group Quarters on base; base housing on base or off-base housing through the reported U.S. Zip Code. We are trying to accomplish this in a reasonable and appropriate process.

The staff requested the universities throughout the state to provide data of students who pay out of state tuition.

The universities provided the following counts:

- Hawaii Pacific University international and mainland students by address. Some of these addresses are associated with military bases or commands 3,203
- Brigham Young University Hawaii international and non-international students by address 627
- University of Hawaii System students by U.S. Zip Codes 10,493
- Chaminade University did not report.
From their website total enrollment 2,781
59% Hawaii resident 41% other than Hawaii



Hawaii Reapportionment Commission

17 August 2011

Reapportionment Project Office: Contact Information

<http://hawaii.gov/elections/reapportionment>

Address:

State Capitol

415 South Beretania Street, Rm #445


Honolulu, HI 96813

Telephone: (808) 586-4100

Toll Free: (877) 854-6749

Fax: (808) 586-4105

Email: reapportionment@hawaii.gov

 [Build Redistricting Plans Online! https://redistricting.hawaii.gov/](https://redistricting.hawaii.gov/)

✓ Create District Plans ✓ Share Plans ✓ Review Plans ✓ Submit Plans

Open

Edit

Review

Share

Submit



www.olelo.org/olelonet

Search Archives:

Permanent and Non-Permanent Military Residents

The non-permanent resident extraction model used in 1991 and 2001 relied on receiving location specific (address or ZIP Code) residence information for the specific non-permanent residents to be extracted.

In 2011, the data received from the Defense Manpower Data Center (DMDC) does not provide residence information for military sponsors nor does it provide specific breakdowns of permanent and non-permanent residents by location.

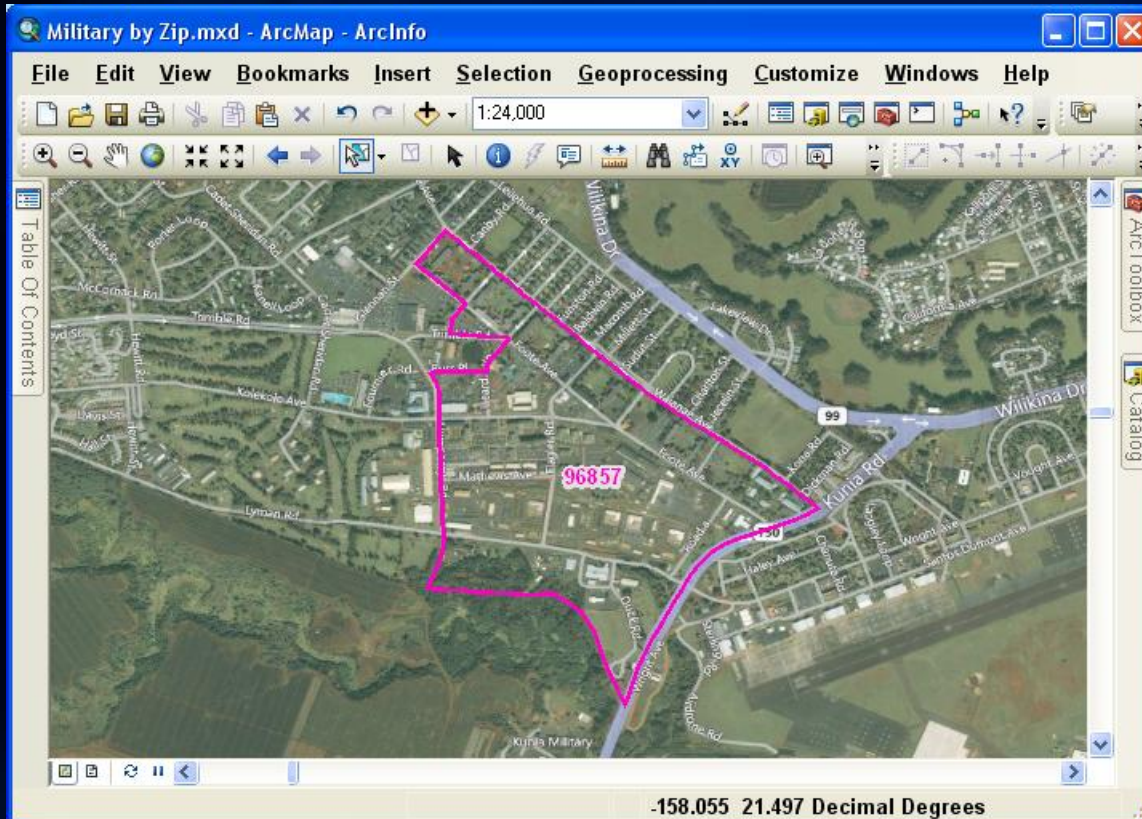
This lack of specific data from DMDC does not allow the model used previously to be used this time.

Examples from Schofield Barracks, Marine Corps Base Hawaii and Joint Base Pearl Harbor will help illustrate.

Permanent and Non-Permanent Military Residents

Data from DMDC for ZIP Code 96857 shows 17,004 sponsors and 968 dependents, for a total of 18,012 military residents.

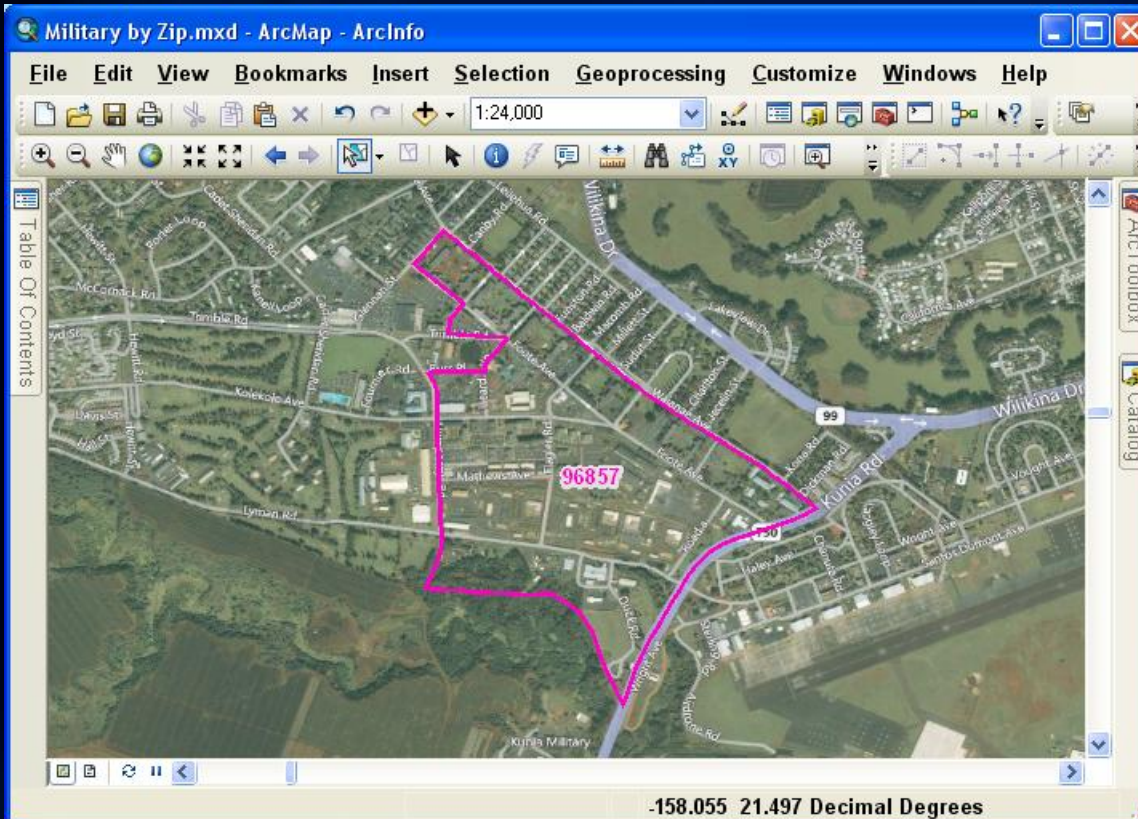
DMDC does not indicate what portion of the 18,012 are permanent residents and what portion are non-permanent residents.



Permanent and Non-Permanent Military Residents

Data from DMDC for ZIP Code 96857 shows 17,004 sponsors and 968 dependents, for a total of 18,012 military residents.

DMDC does not indicate what portion of the 18,012 are permanent residents and what portion are non-permanent residents.



U.S. Census data for ZCTA 96857 shows a total population of 2,522.

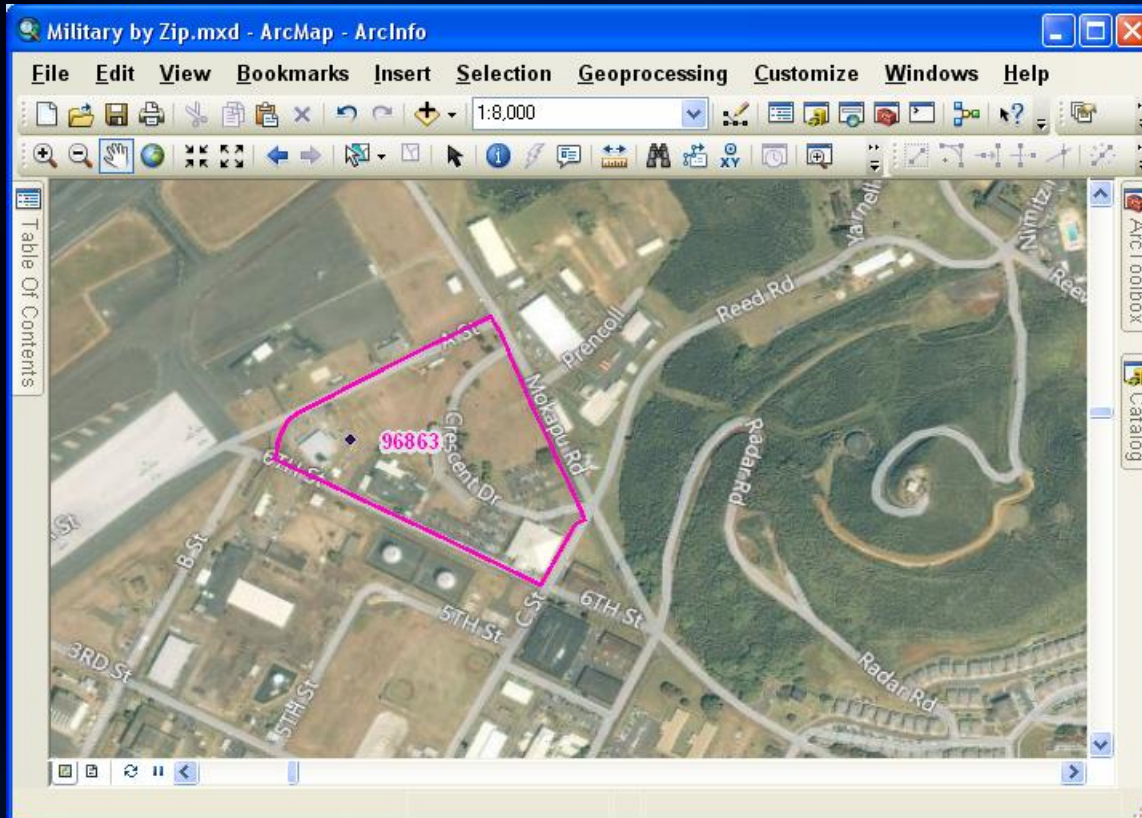
U.S. Census data for ZCTA 96857 further shows that all 2,522 residents are living in group quarters.

There is a question whether dependents live in group quarters.

Permanent and Non-Permanent Military Residents

Data from DMDC for ZIP Code 96863 shows 7,019 sponsors and 627 dependents, for a total of 7,646 military residents.

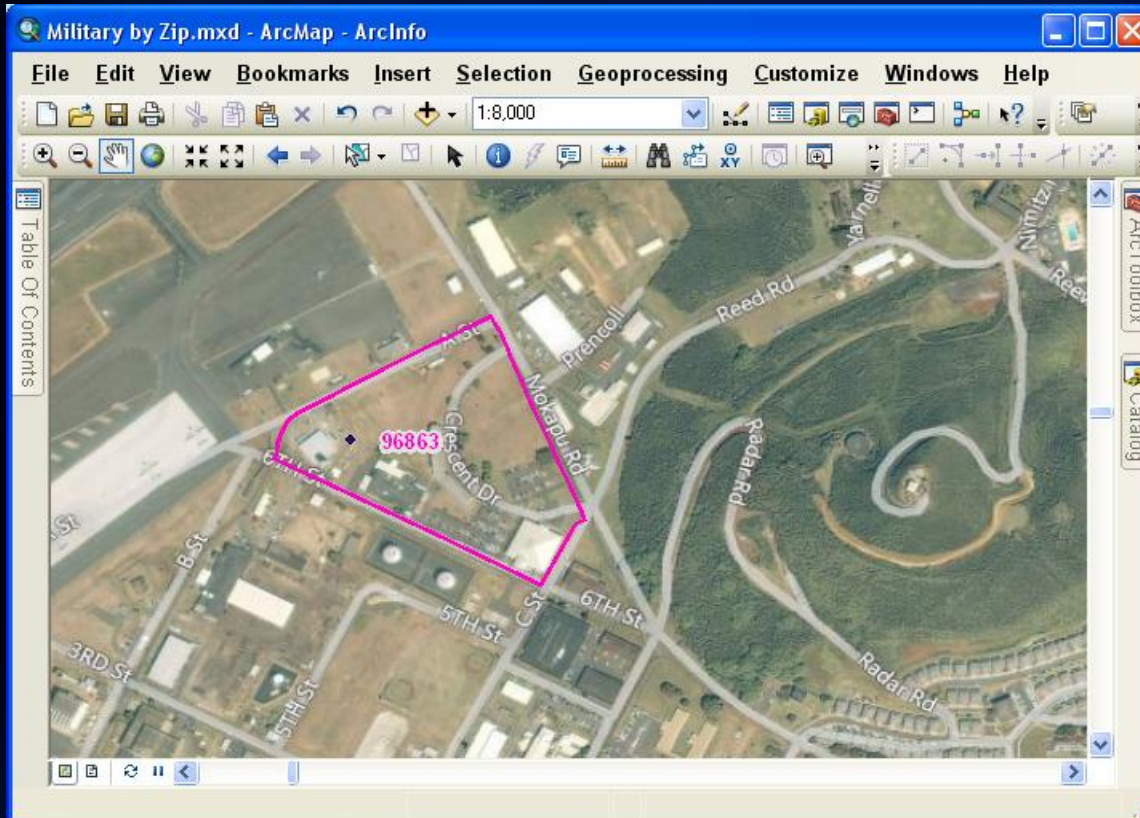
DMDC does not indicate what portion of the 7,646 are permanent residents and what portion are non-permanent residents.



Permanent and Non-Permanent Military Residents

Data from DMDC for ZIP Code 96863 shows 7,019 sponsors and 627 dependents, for a total of 7,646 military residents.

DMDC does not indicate what portion of the 7,646 are permanent residents and what portion are non-permanent residents.



U.S. Census data for ZCTA 96863 shows a total population of 52.

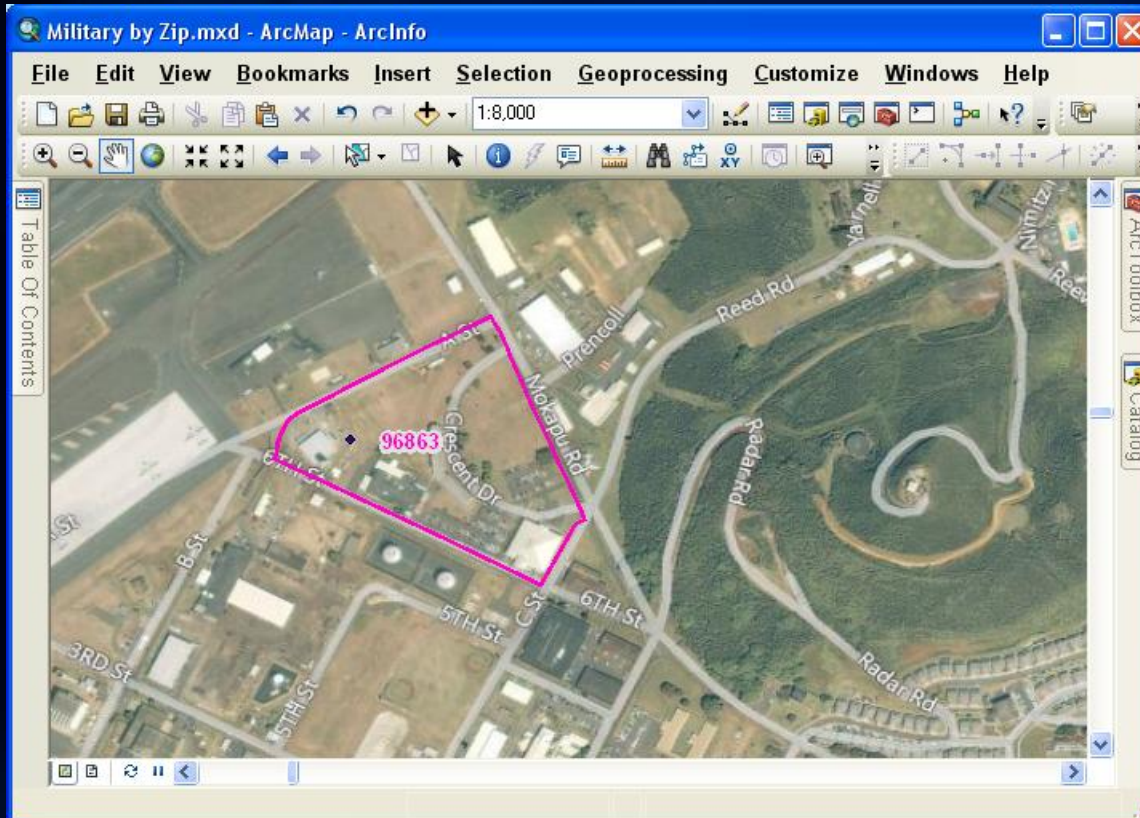
DMDC only reports sponsor duty ZIP Codes and clearly 7,019 sponsors do not live in 96863.

We do not know where these sponsors live nor where they would have been counted by the U.S. Census.

Permanent and Non-Permanent Military Residents

Data from DMDC for ZIP Code 96863 shows 7,019 sponsors and 627 dependents, for a total of 7,646 military residents.

DMDC does not indicate what portion of the 7,646 are permanent residents and what portion are non-permanent residents.



U.S. Census data for ZCTA 96863 shows a total population of 52.

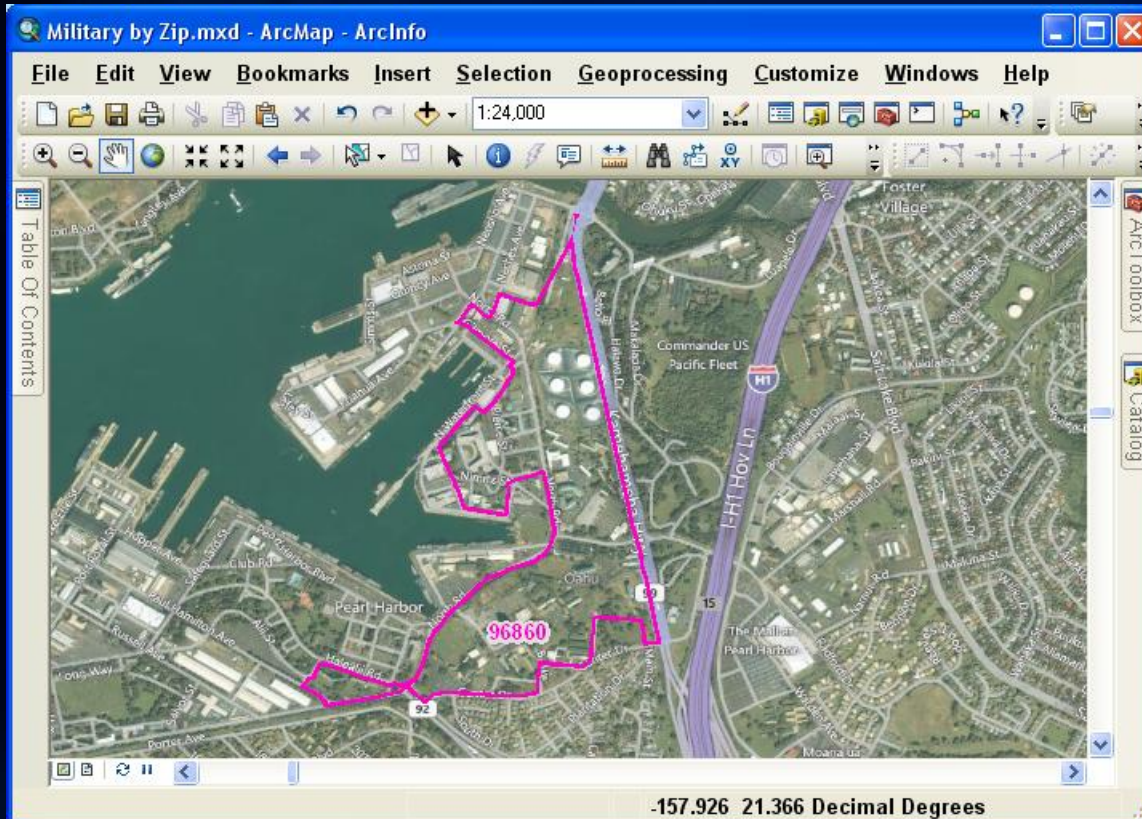
U.S. Census data for ZCTA 96863 further shows that all 52 residents are living in group quarters.

There is a question whether dependents live in group quarters.

Permanent and Non-Permanent Military Residents

Data from DMDC for ZIP Code 96860 shows 3,358 sponsors and 178 dependents, for a total of 3,536 military residents.

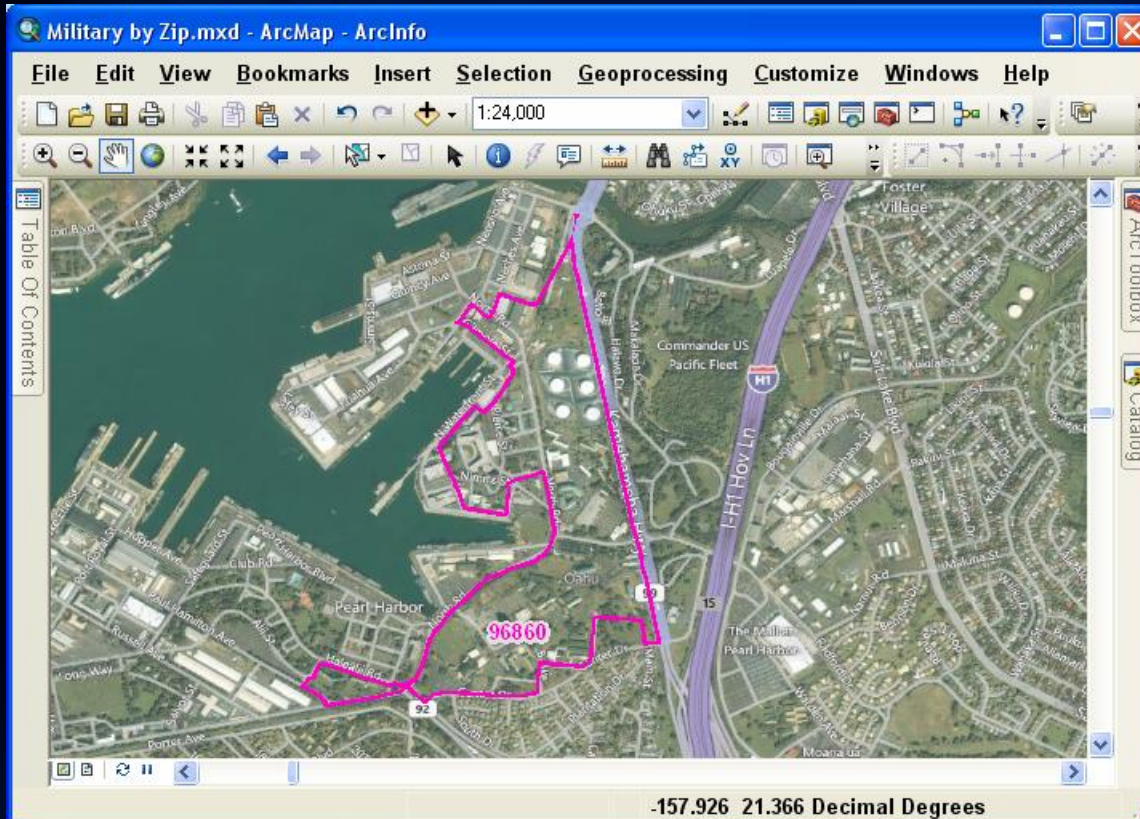
DMDC does not indicate what portion of the 3,536 are permanent residents and what portion are non-permanent residents.



Permanent and Non-Permanent Military Residents

Data from DMDC for ZIP Code 96860 shows 3,358 sponsors and 178 dependents, for a total of 3,536 military residents.

DMDC does not indicate what portion of the 3,536 are permanent residents and what portion are non-permanent residents.



U.S. Census data for ZCTA 96860 shows a total population of 1,124.

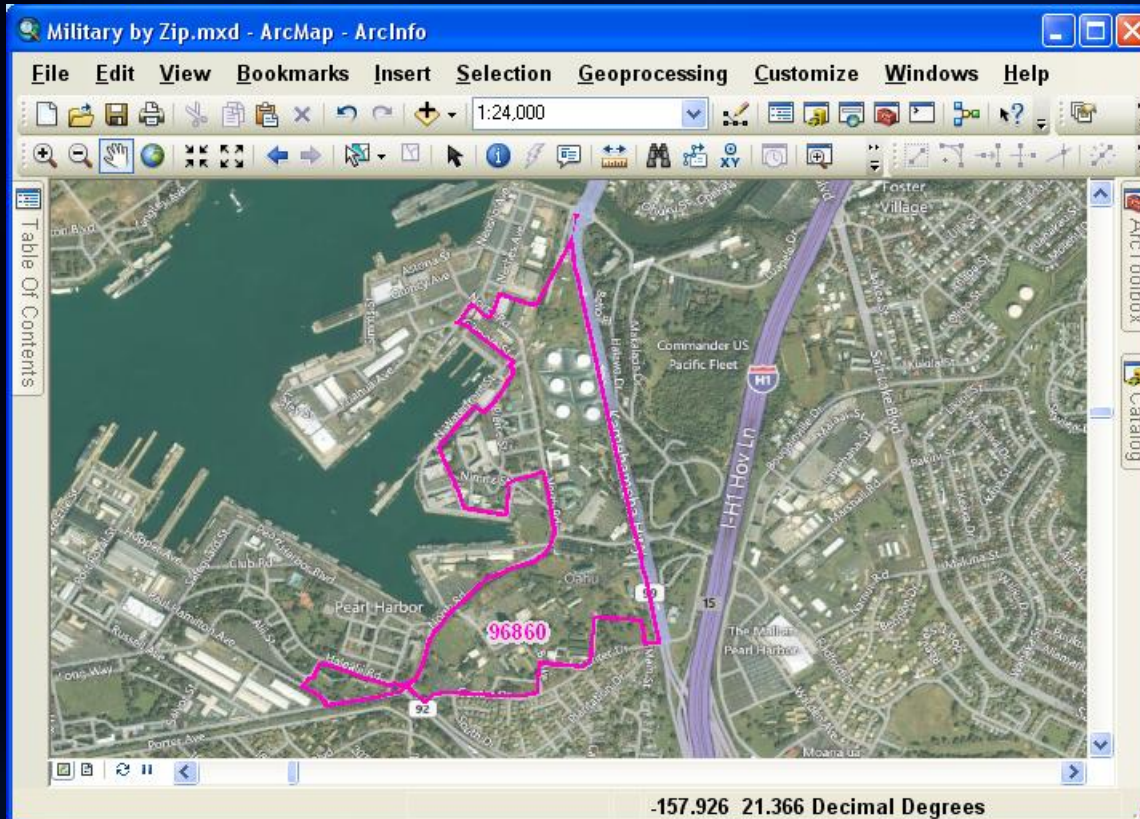
DMDC only reports sponsor duty ZIP Codes and clearly 3,358 sponsors do not live in 96860.

We do not know where these sponsors live nor where they would have been counted by the U.S. Census.

Permanent and Non-Permanent Military Residents

Data from DMDC for ZIP Code 96860 shows 3,358 sponsors and 178 dependents, for a total of 3,536 military residents.

DMDC does not indicate what portion of the 3,536 are permanent residents and what portion are non-permanent residents.



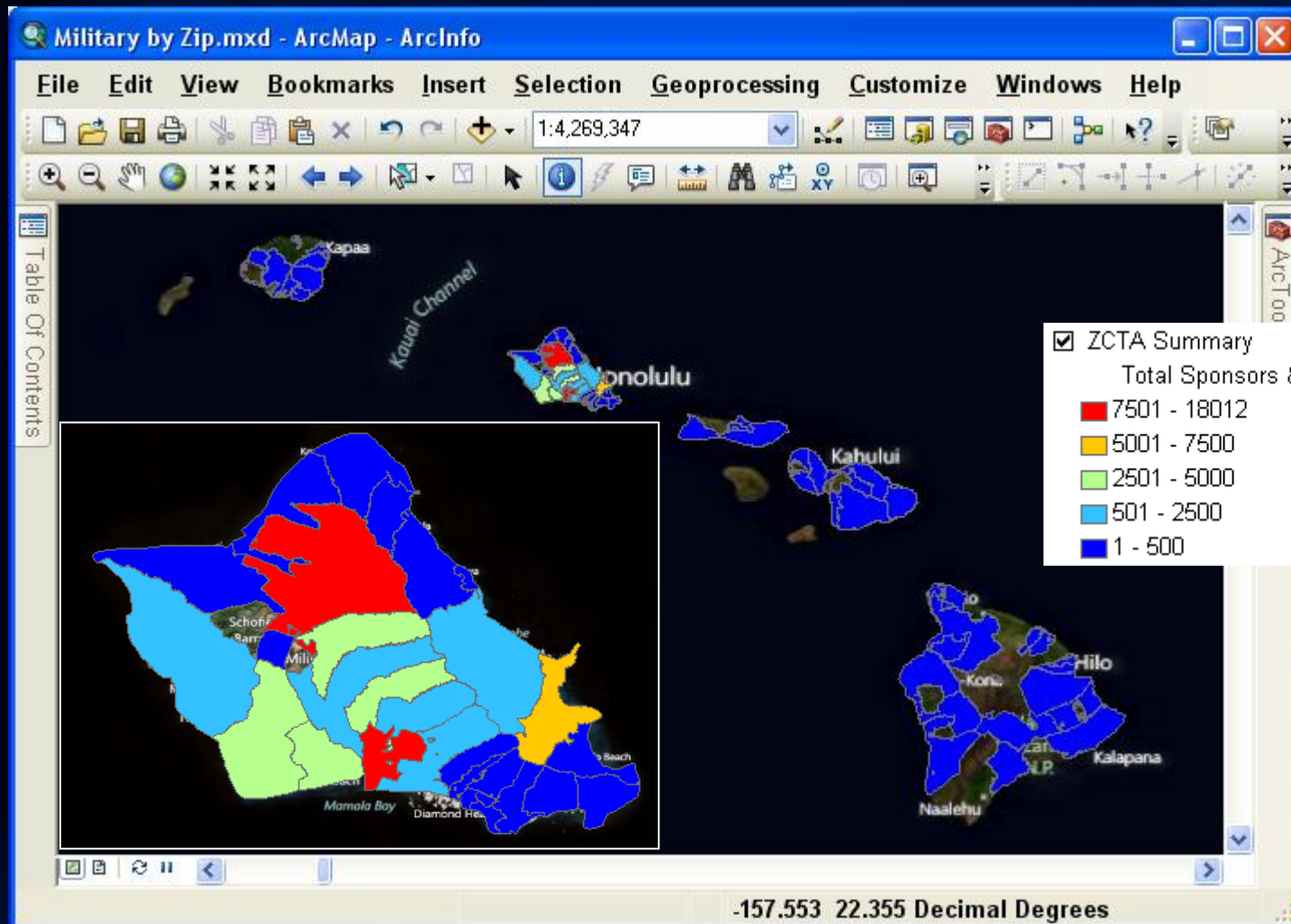
U.S. Census data for ZCTA 96860 shows a total population of 1,124.

U.S. Census data for ZCTA 96860 further shows that all 1,124 residents are living in group quarters.

There is a question whether dependents live in group quarters.

Permanent and Non-Permanent Military Residents

Data from DMDC shows sponsors and dependents spread statewide with the majority on Oahu, but does not distinguish between permanent and non-permanent residents.



Non-Permanent Student Residents

If extractions to the U.S. Census PL 94-171 census block counts are to be made for redistricting, data on the non-permanent populations to be extracted must also be known or estimated at the census block level.

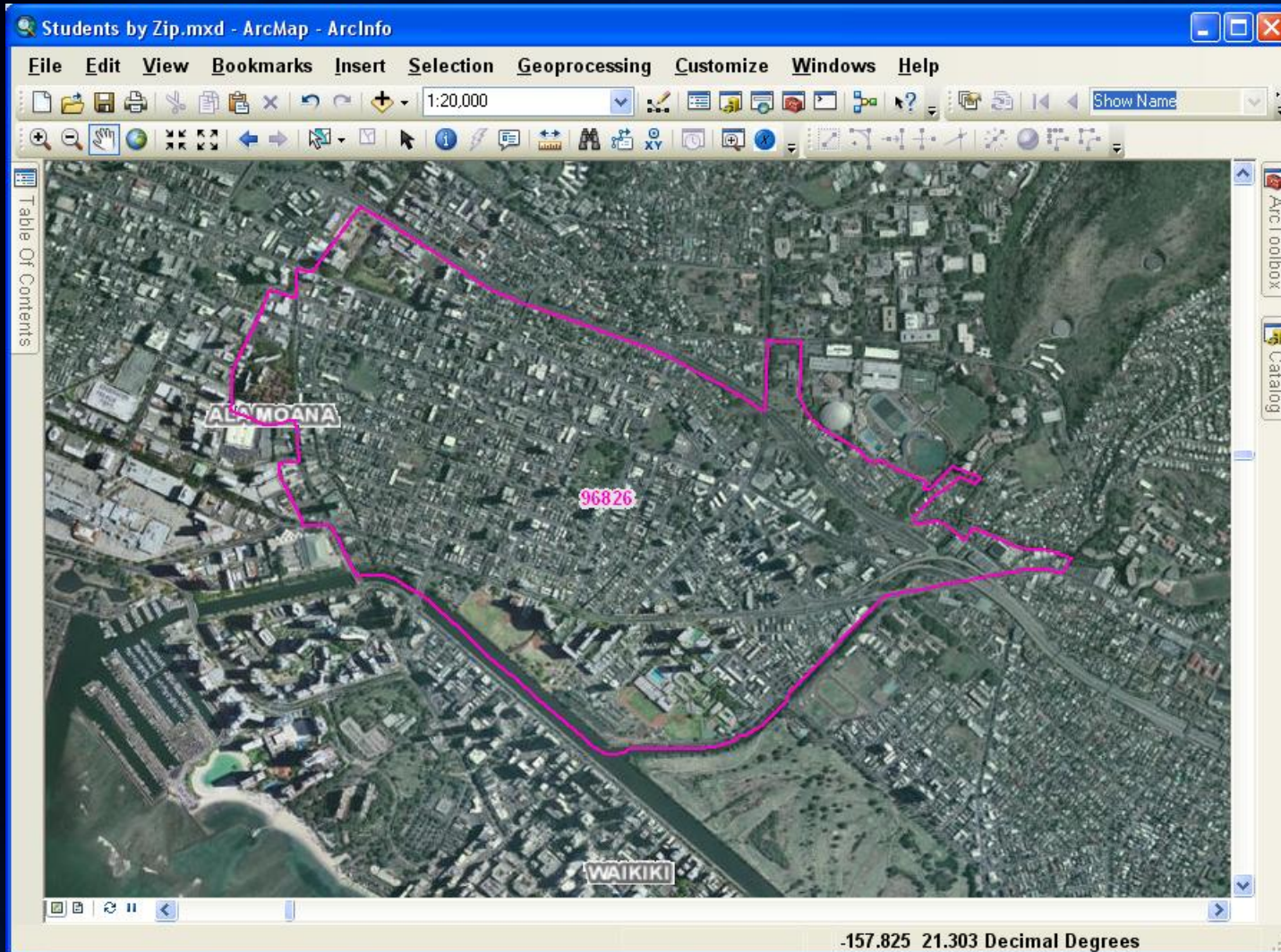
For privacy reasons, data is often only provided at a ZIP Code level.

A disaggregation model is applied to assign ZIP Code-level non-permanent populations to individual census blocks in proportion to the total population of each census block.

An example showing University of Hawaii non-resident student counts for ZIP Code 96826 being assigned to individual census blocks will help illustrate how this model works.

Non-Permanent Student Residents

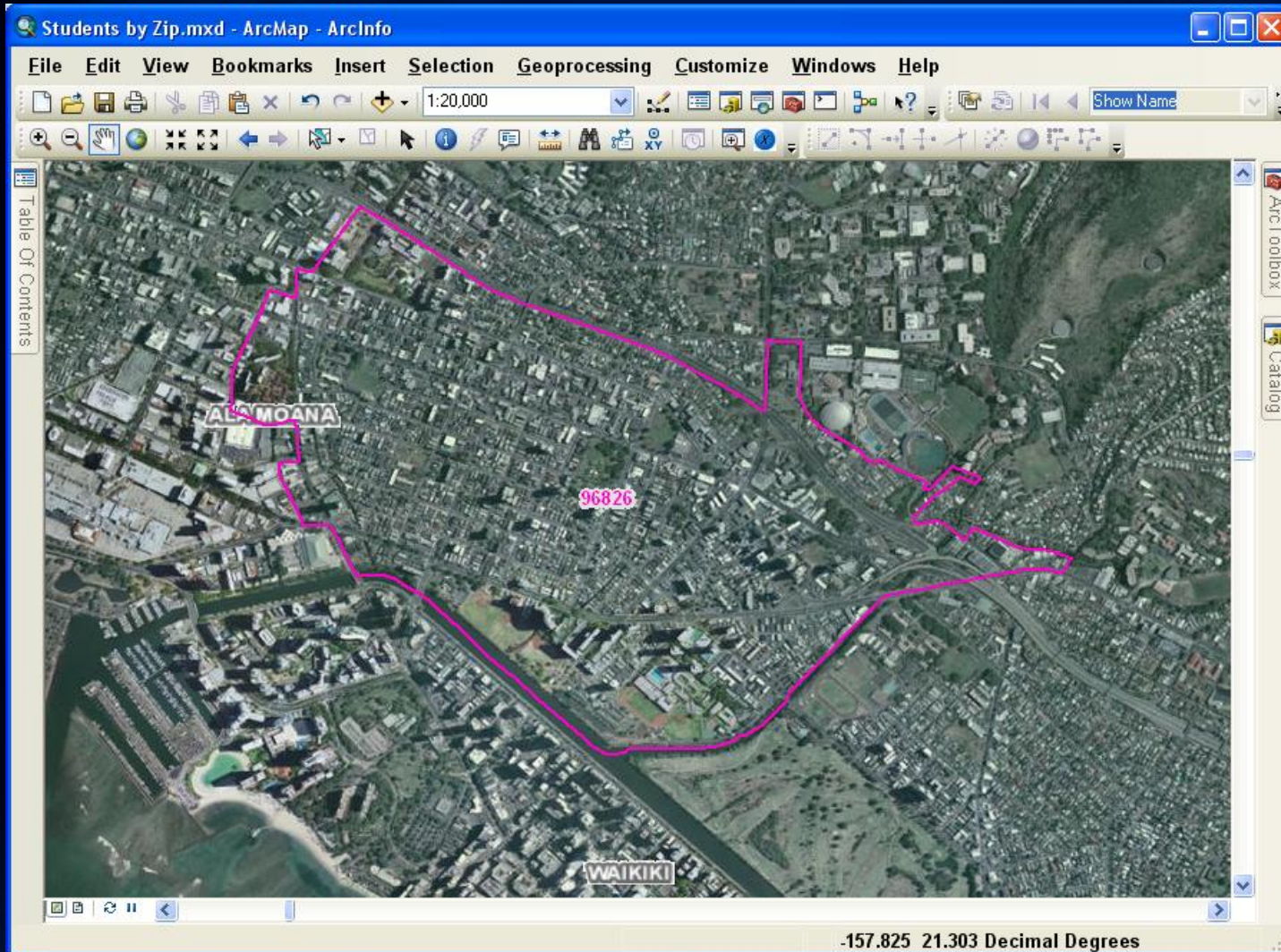
ZIP Code 96826 is just south of the University of Hawaii at Manoa campus.



ZIP Code 96826

Non-Permanent Student Residents

According to data received from the University of Hawaii,
715 non-permanent resident students live in ZIP Code 96826.

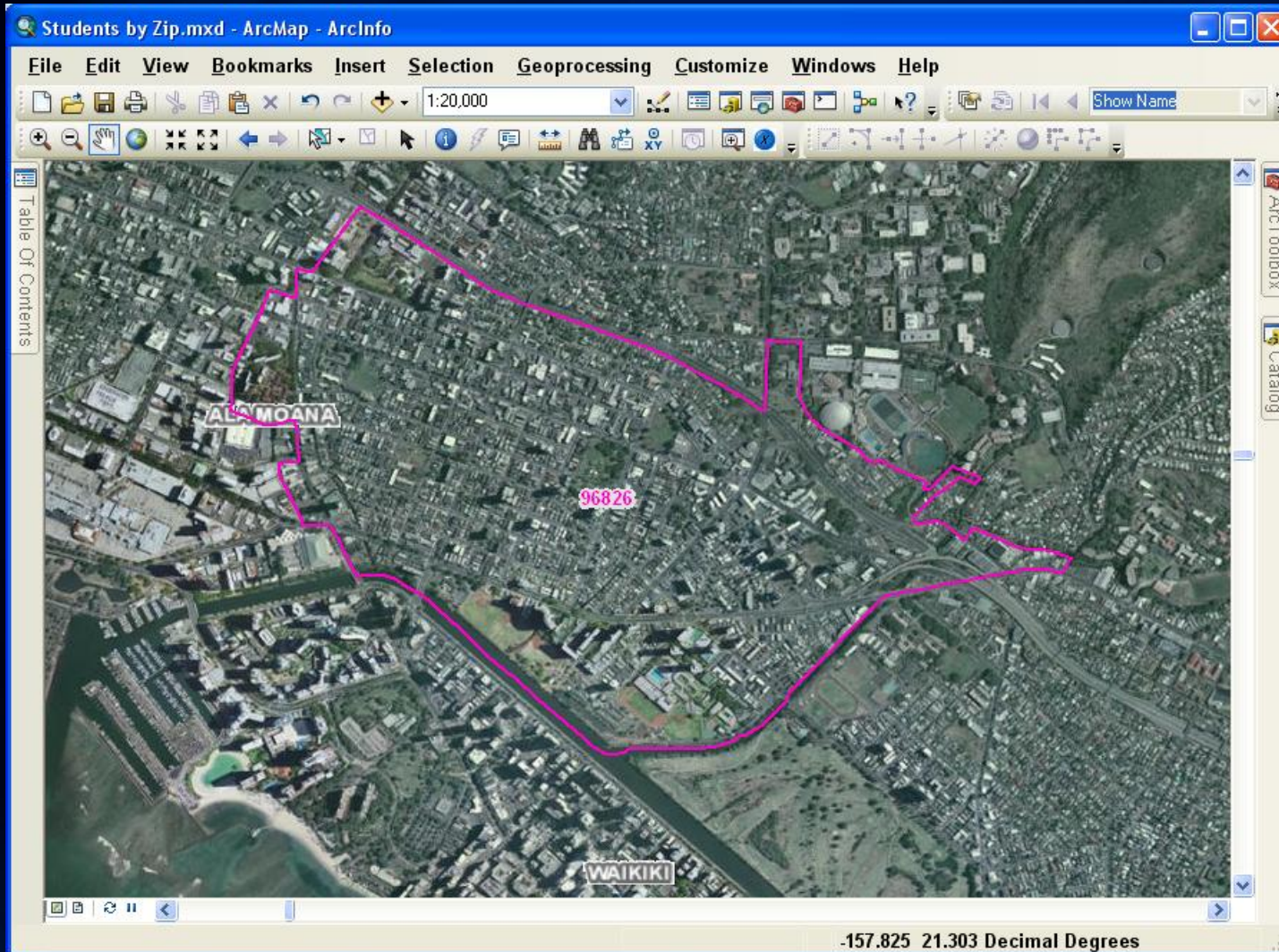


ZIP Code 96826

715 npr students

Non-Permanent Student Residents

According to the U.S. Census Bureau PL 94-171 data,
30,842 residents live in ZIP Code Tabulation Area (ZCTA) 96826.



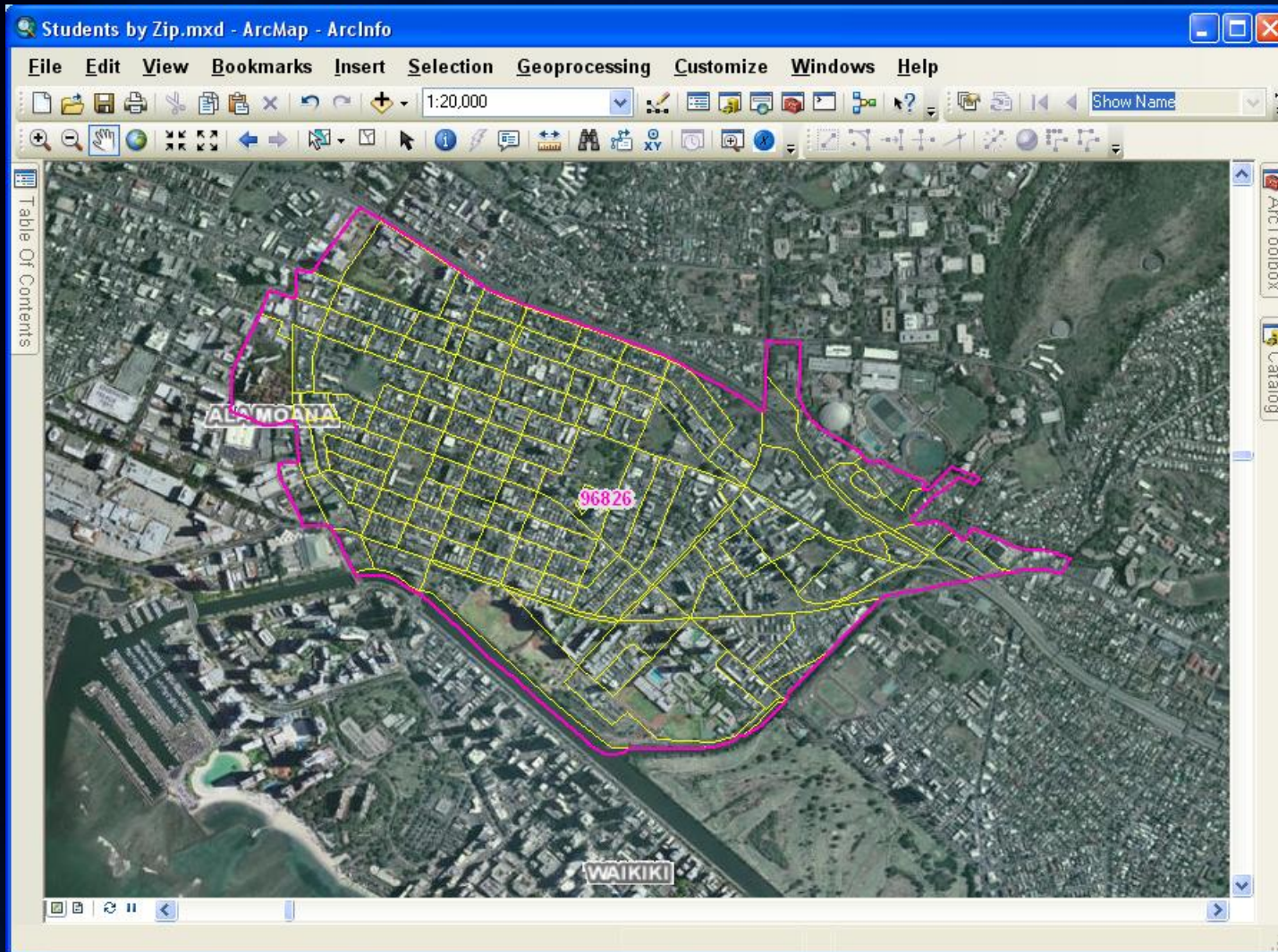
ZIP Code 96826

715 npr students

30,842 population

Non-Permanent Student Residents

These 30,842 residents are spread across 121 census blocks.



ZIP Code 96826

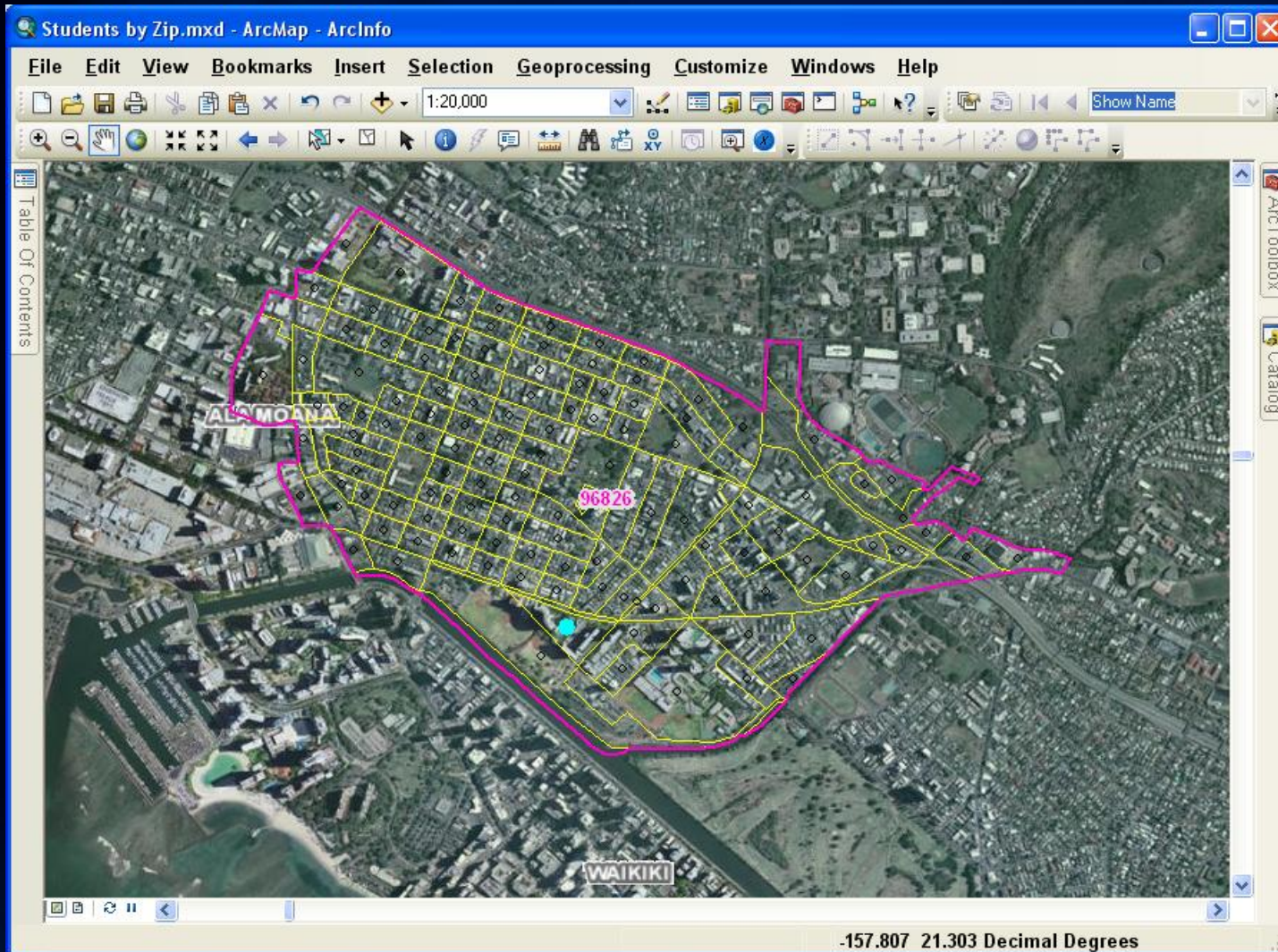
715 npr students

30,842 population

121 census blocks

Non-Permanent Student Residents

These 30,842 residents are spread across 121 census blocks with population.
The largest block population is 1,841.



ZIP Code 96826

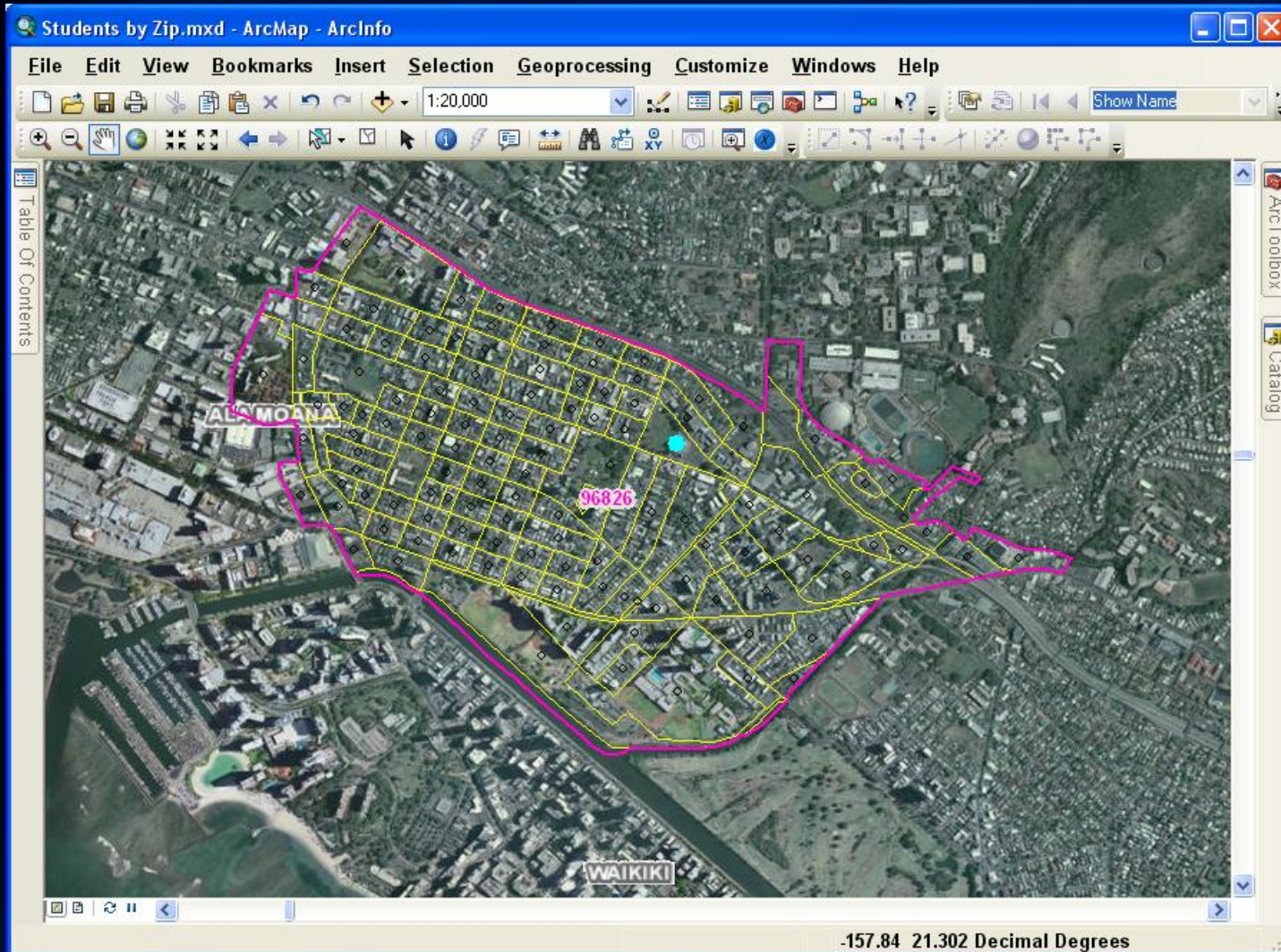
715 npr students

30,842 population

121 census blocks

Non-Permanent Student Residents

These 30,842 residents are spread across 121 census blocks with population.
The smallest block population is 2.



ZIP Code 96826

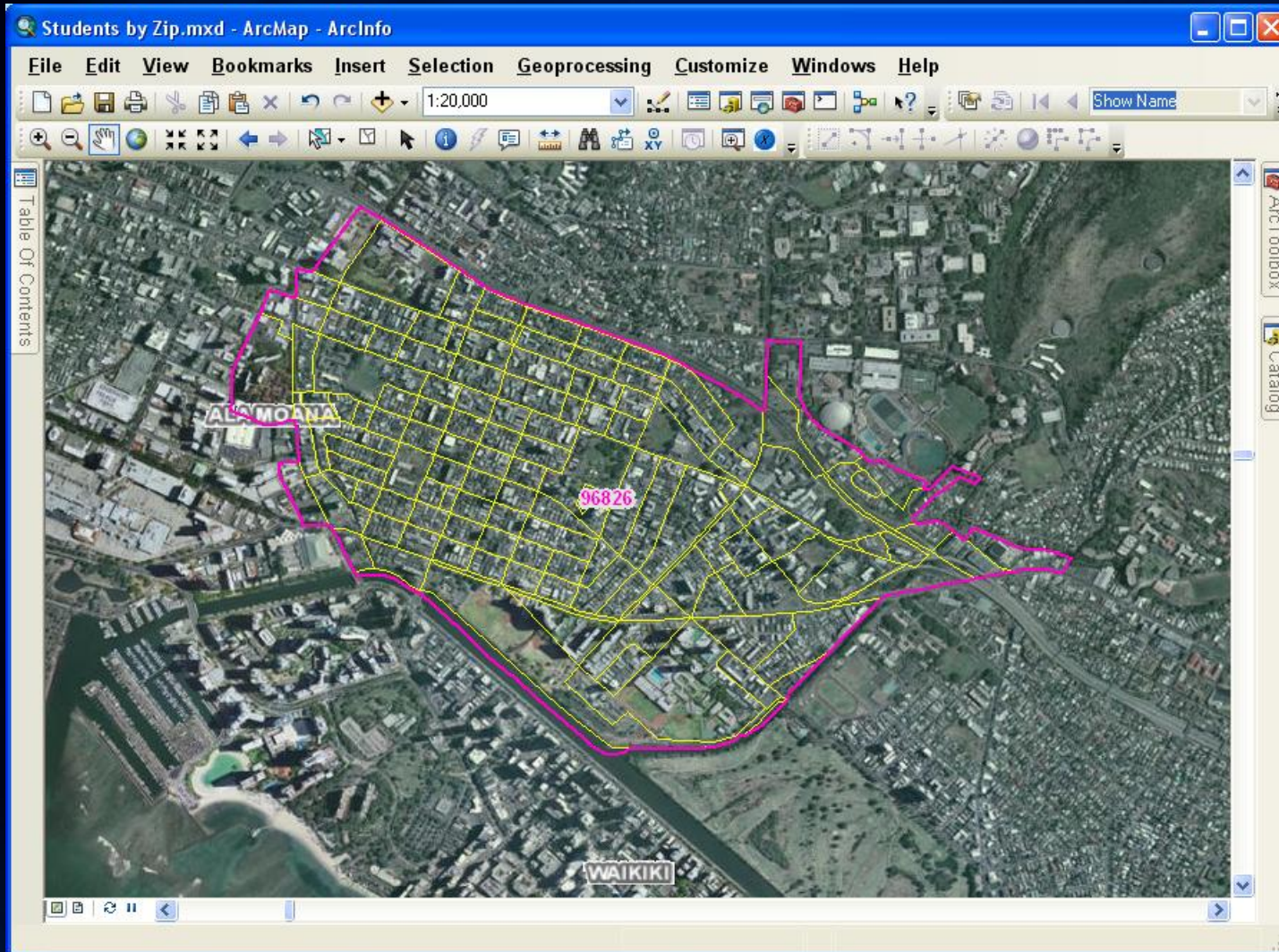
715 npr students

30,842 population

121 census blocks

Non-Permanent Student Residents

These 30,842 residents are spread across 121 census blocks with population.
How do we spread 715 non-permanent students across the 121 census blocks?



ZIP Code 96826

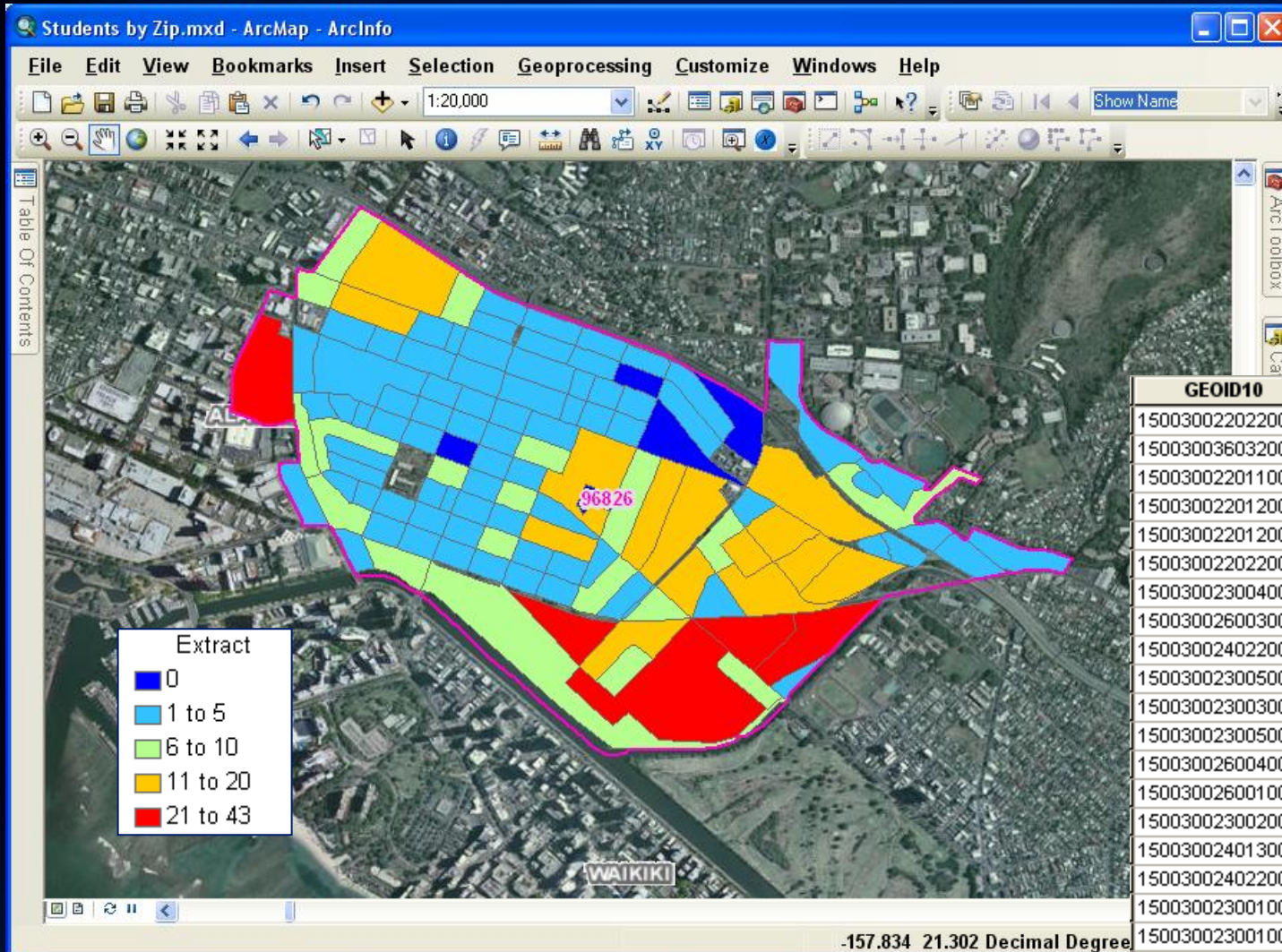
715 npr students

30,842 population

121 census blocks

Non-Permanent Student Residents

With 30,842 residents and 715 non-permanent residents, approximately 1 in every 43 residents is non-permanent, we use that proportion to extract from each census block.



ZIP Code 96826

715 npr students

30,842 population

121 census blocks

GEOID10	ZCTA	Pop2010	Extract	Adjusted
150030022022001	96826	1841	43	1798
150030036032001	96826	1791	41	1750
150030022011000	96826	1115	26	1089
150030022012000	96826	1111	26	1085
150030022012001	96826	970	22	948
150030022022005	96826	845	20	825
150030023004002	96826	733	17	716
150030026003002	96826	661	15	646
150030024022001	96826	649	15	634
150030023005000	96826	628	15	613
150030023003002	96826	609	14	595
150030023005001	96826	607	14	593
150030026004003	96826	573	13	560
150030026001000	96826	564	13	551
150030023002008	96826	510	12	498
150030024013002	96826	509	12	497
150030024022004	96826	503	12	491
150030023001000	96826	481	11	470
150030023001001	96826	464	11	453
150030035021006	96826	432	10	422
150030023004000	96826	417	10	407

-157.834 21.302 Decimal Degree



Hawaii Reapportionment Commission

17 August 2011

Reapportionment Project Office: Contact Information

<http://hawaii.gov/elections/reapportionment>

Address:

State Capitol

415 South Beretania Street, Rm #445


Honolulu, HI 96813





Telephone: (808) 586-4100

Toll Free: (877) 854-6749

Fax: (808) 586-4105

Email: reapportionment@hawaii.gov

 [Build Redistricting Plans Online! https://redistricting.hawaii.gov/](https://redistricting.hawaii.gov/)

 Create District Plans  Share Plans  Review Plans  Submit Plans

Open

Edit

Review

Share

Submit



www.olelo.org/olelonet

Search Archives: