



# Hawaii Reapportionment Commission

## 17 August 2011

### Reapportionment Project Office: Contact Information

<http://hawaii.gov/elections/reapportionment>

**Address:**

State Capitol

415 South Beretania Street, Rm #445


Honolulu, HI 96813

**Telephone:** (808) 586-4100

**Toll Free:** (877) 854-6749

**Fax:** (808) 586-4105

**Email:** [reapportionment@hawaii.gov](mailto:reapportionment@hawaii.gov)

 [Build Redistricting Plans Online! https://redistricting.hawaii.gov/](https://redistricting.hawaii.gov/)

✔ Create District Plans   ✔ Share Plans   ✔ Review Plans   ✔ Submit Plans

Open

Edit

Review

Share

Submit



[www.olelo.org/olelonet](http://www.olelo.org/olelonet)

Search Archives:

# Commission Proposed Plans – All Online

- **Large Scale Maps for Public Inspection**
- **Online Maps**
  - **Static PDFs**
  - **Online Map for Viewing**
  - **Online Map for Editing – Hawaii Redistricting Online**

# Proposed Plans – Reapportionment Website

<http://hawaii.gov/elections/reapportionment>

## REDISTRICTING AND REAPPORTIONMENT

Redistricting and reapportionment are the processes used to ensure each political district has been created equally.

### State of Hawaii 2011 Legislative Reapportionment Plan

- [View State of Hawaii 2011 Legislative Reapportionment Plan](#)
- [Hawaii Reapportionment - Proposed Senate and House Districts](#)
- [Proposed Plan Maps - Locations for Public Inspection](#)

### Reapportionment Project Office: Contact Information

**Address:**

State Capitol

415 South Beretania Street, Rm #445

Honolulu, HI 96813

**Telephone:** (808) 586-4100

**Toll Free:** (877) 854-6749

**Fax:** (808) 586-4105

**Email:** [reapportionment@hawaii.gov](mailto:reapportionment@hawaii.gov)


# Proposed Plans – Public Inspection

<http://hawaii.gov/elections/reapportionment>

## REDISTRICTING AND REAPPORTIONMENT

Redistricting and reapportionment are the processes used to ensure each political district has been created equally.

### State of Hawaii 2011 Legislative Reapportionment Plan

- [View State of Hawaii 2011 Legislative Reapportionment Plan](#)
- [Hawaii Reapportionment - Proposed Senate and House Districts](#)
- [Proposed Plan Maps - Locations for Public Inspection](#) 

### Reapportionment Project Office: Contact Information

**Address:**

State Capitol

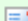
415 South Beretania Street, Rm #445

Honolulu, HI 96813

**Telephone:** (808) 586-4100

**Toll Free:** (877) 854-6749

**Fax:** (808) 586-4105

**Email:**  [reapportionment@hawaii.gov](mailto:reapportionment@hawaii.gov)

# Proposed Plans – Public Inspection

<http://hawaii.gov/elections/reapportionment>

## CENTRAL HONOLULU

Hawaii State Library, 478 S. King St.

City & County of Honolulu Clerk's Office, Honolulu Hale, 530 S. King St.

Kaimuki Public Library, 1041 Koko Head Ave.

## LEEWARD/CENTRAL OAHU

Office of Elections, 802 Lehua Ave., Pearl City

Kapolei Public Library, 1020 Manawai St.

Mililani Public Library, 95-450 Makaimoimo St.

Pearl City Public Library, 1138 Waimano Home Rd.

## WINDWARD OAHU

Kahuku Public & School Library, 56-490 Kamehameha Hwy.

Kaneohe Public Library, 45-829 Kamehameha Hwy.

# Proposed Plans – Public Inspection

<http://hawaii.gov/elections/reapportionment>

## HAWAII

Hawaii County Clerk's Office-Hilo, 25 Aupuni St.

Hawaii County Clerk's Office-Kona Civic Center, 74-5044 Ane Keohokalohe Hwy.

Hilo Public Library, 300 Waianuenue Ave.

University of Hawaii at Hilo Library, 200 W. Kawili St.

Kailua-Kona Public Library, 75-138 Hualalai Rd.

Kealahou Public Library, 81-6300 Mamalahoa Hwy.

Keaau Public School & Library, 16-571 Keaau-Pahoa Rd.

Laupahoehoe Public & School Library, 35-2065 Old Mamalahoa Hwy.

Naalehu Public Library, 95-5669 Mamalahoa Hwy.

Pahoa Community & School Library, 15-3038 Puna Rd.

Parker Public & School Library, 67-1209 Mamalahoa Hwy., Kamuela

# Proposed Plans – Public Inspection

<http://hawaii.gov/elections/reapportionment>

## MAUI, MOLOKAI & LANAI

Maui County Clerk's Office, 200 S. High St., Wailuku

Hana Public School & Library, 4111 Hana Hwy.

Lahaina Public Library, 680 Wharf St.

Maui Public Library, 90 School St., Kahului

Molokai Library, 15 Alamalama St., Kaunakakai

Lanai Public & School Library, 555 Fraser Ave., Lanai City

## KAUAI

Kauai County Clerk's Office, 4386 Rice St., Lihue

Hanapepe Public Library, 4490 Kona Rd.

Kapaa Public Library, 1464 Kuhio Hwy.

Koloa Public Library, 3223 Poipu Rd.

Princeville Public Library, 4343 Emmalani Dr.


# Proposed Plans – Static PDFs

<http://hawaii.gov/elections/reapportionment>

## REDISTRICTING AND REAPPORTIONMENT

Redistricting and reapportionment are the processes used to ensure each political district has been created equally.

### State of Hawaii 2011 Legislative Reapportionment Plan

- [View State of Hawaii 2011 Legislative Reapportionment Plan](#) 
- [Hawaii Reapportionment - Proposed Senate and House Districts](#)
- [Proposed Plan Maps - Locations for Public Inspection](#)

### Reapportionment Project Office: Contact Information

**Address:**

State Capitol

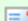
415 South Beretania Street, Rm #445

Honolulu, HI 96813

**Telephone:** (808) 586-4100

**Toll Free:** (877) 854-6749

**Fax:** (808) 586-4105

**Email:**  [reapportionment@hawaii.gov](mailto:reapportionment@hawaii.gov)

# Proposed Plans – Static PDFs

## STATE OF HAWAII 2011 PROPOSED LEGISLATIVE REAPPORTIONMENT PLAN

✓ Hawaii Reapportionment - Proposed Senate and House Districts available [here](#).

CONGRESSIONAL DISTRICTS	SENATE DISTRICTS	HOUSE DISTRICTS
PDF	PDF	PDF


### Proposed Plans (Large Scale Maps)

HAWAII	MAUI	KAUAI	OAHU
UNIT	UNIT	UNIT	UNIT - H1
REGION 1	REGION 1	REGION 1	REGION 1
REGION 2	REGION 2	REGION 2	REGION 2
REGION 3	REGION 3	-	REGION 3
REGION 4	REGION 4	-	REGION 4

# Proposed Plans – Static PDFs

## STATE OF HAWAII 2011 PROPOSED LEGISLATIVE REAPPORTIONMENT PLAN

✓ Hawaii Reapportionment - Proposed Senate and House Districts available [here](#).

CONGRESSIONAL DISTRICTS	SENATE DISTRICTS	HOUSE DISTRICTS
PDF	PDF 	PDF

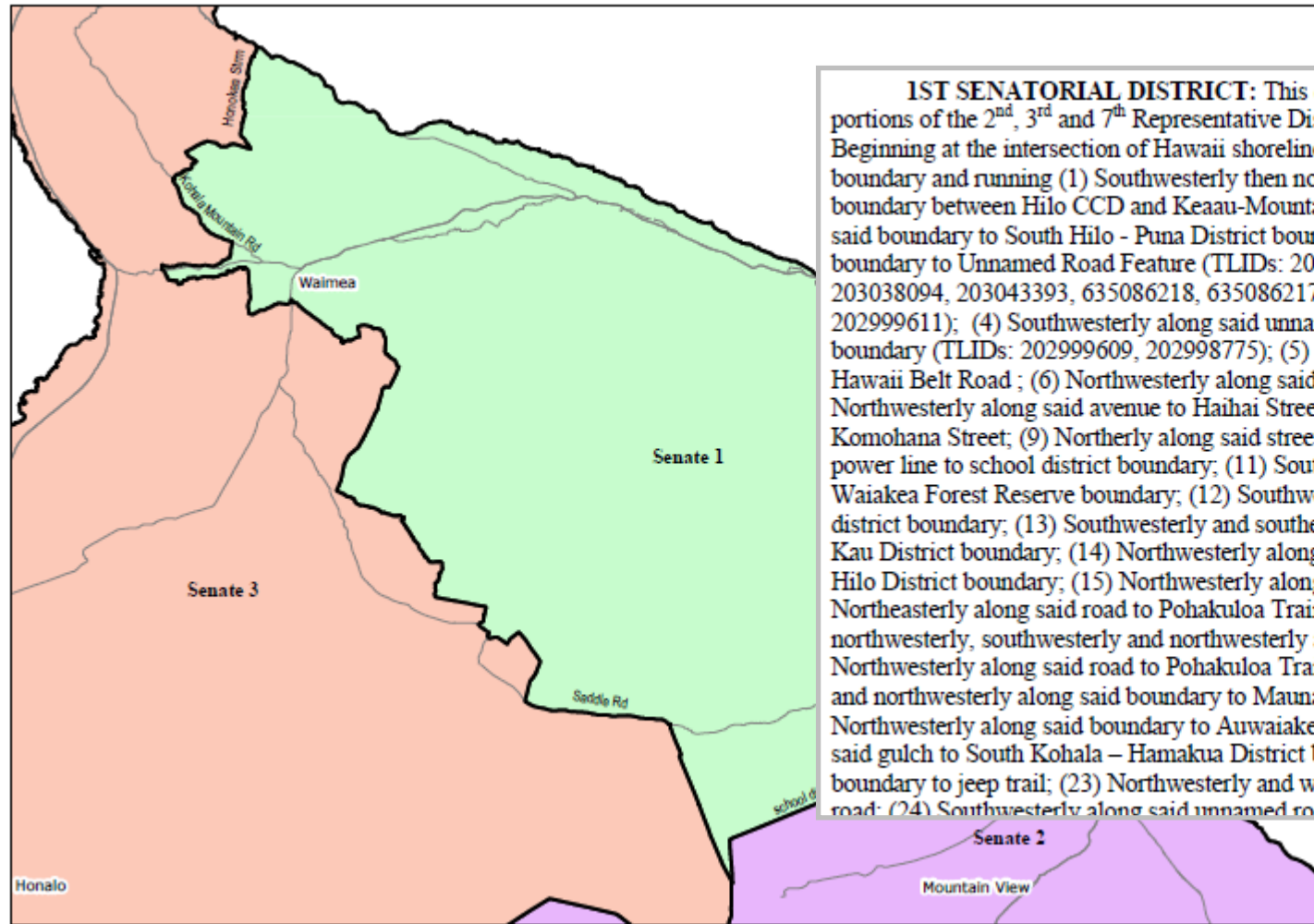
### Proposed Plans (Large Scale Maps)

HAWAII	MAUI	KAUAI	OAHU
UNIT	UNIT	UNIT	UNIT - H1
REGION 1	REGION 1	REGION 1	REGION 1
REGION 2	REGION 2	REGION 2	REGION 2
REGION 3	REGION 3		REGION 3
REGION 4	REGION 4		REGION 4

# Proposed Plans – Static PDFs

2011 Hawaii State Reapportionment Commission

Proposed Plan for Senate 1



**1ST SENATORIAL DISTRICT:** This district is comprised of the 1<sup>st</sup> and portions of the 2<sup>nd</sup>, 3<sup>rd</sup> and 7<sup>th</sup> Representative Districts and described as follows: Beginning at the intersection of Hawaii shoreline and South Hilo - Puna District boundary and running (1) Southwesterly then northwesterly along said boundary to boundary between Hilo CCD and Keaau-Mountain View CCD; (2) Southwesterly along said boundary to South Hilo - Puna District boundary; (3) Southwesterly along said boundary to Unnamed Road Feature (TLIDs: 202999615, 202999997, 635086370, 203038094, 203043393, 635086218, 635086217, 203044158, 203000344, 203000351, 202999611); (4) Southwesterly along said unnamed feature to South Hilo - Puna District boundary (TLIDs: 202999609, 202998775); (5) Southwesterly along said boundary to Hawaii Belt Road ; (6) Northwesterly along said road to Kilauea Avenue; (7) Northwesterly along said avenue to Haihai Street; (8) Westerly along said street to Komohana Street; (9) Northerly along said street to Power line; (10) Westerly along said power line to school district boundary; (11) Southwesterly along said district boundary to Waiakea Forest Reserve boundary; (12) Southwesterly along said boundary to school district boundary; (13) Southwesterly and southerly along said boundary to South Hilo - Kau District boundary; (14) Northwesterly along said boundary to South Hilo - North Hilo District boundary; (15) Northwesterly along said boundary to Saddle Road; (16) Northeasterly along said road to Pohakuloa Training Area boundary; (17) Northeasterly, northwesterly, southwesterly and northwesterly along said boundary to Saddle Road; (18) Northwesterly along said road to Pohakuloa Training Area boundary; (19) Northeasterly and northwesterly along said boundary to Mauna Kea Forest Reserve boundary; (20) Northwesterly along said boundary to Auwaiakeakua Gulch; (21) Northwesterly along said gulch to South Kohala - Hamakua District boundary; (22) Northeasterly along said boundary to jeep trail; (23) Northwesterly and westerly along said jeep trail to unnamed road; (24) Southwesterly along said unnamed road to jeep trail; (25) Northwesterly along


# Proposed Plans – Static PDFs

## STATE OF HAWAII 2011 PROPOSED LEGISLATIVE REAPPORTIONMENT PLAN

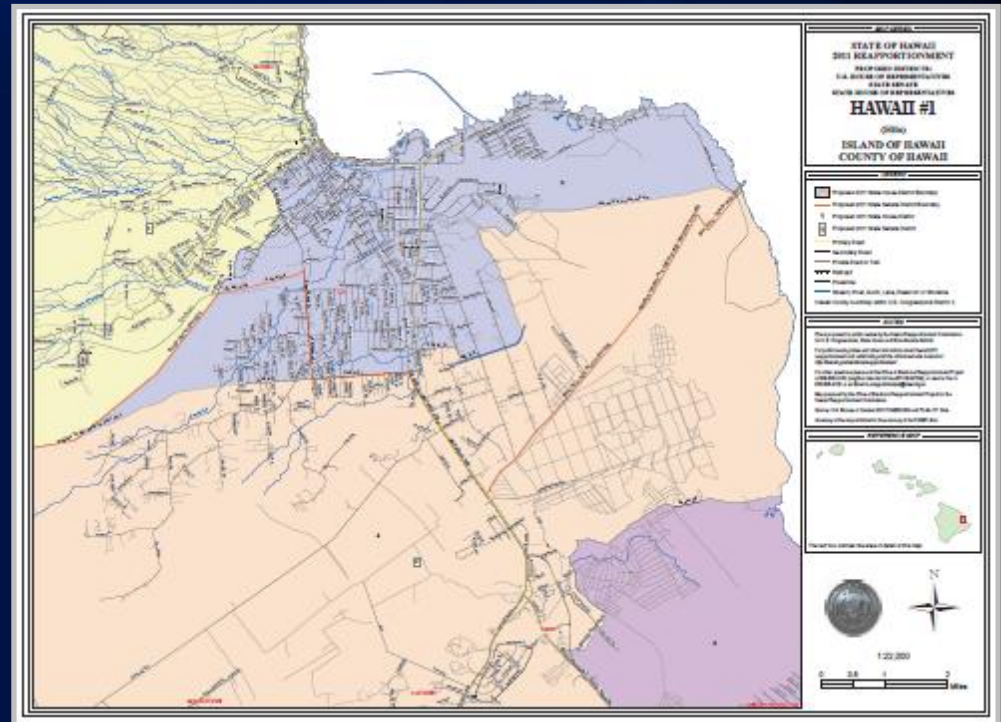
✓ Hawaii Reapportionment - Proposed Senate and House Districts available [here](#).

CONGRESSIONAL DISTRICTS	SENATE DISTRICTS	HOUSE DISTRICTS
PDF	PDF	PDF

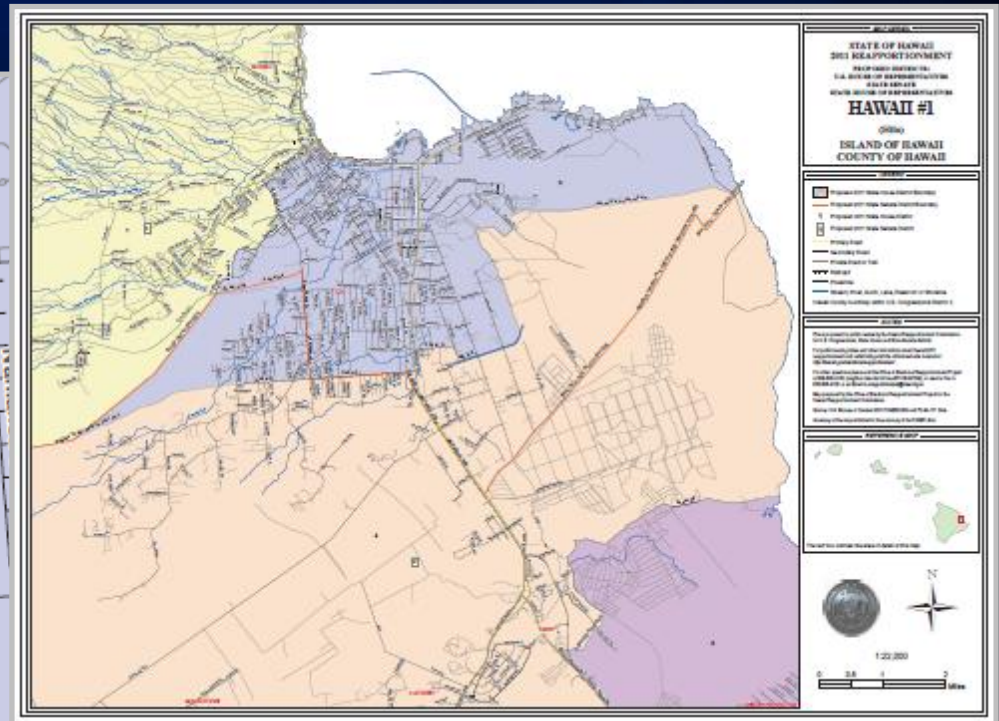
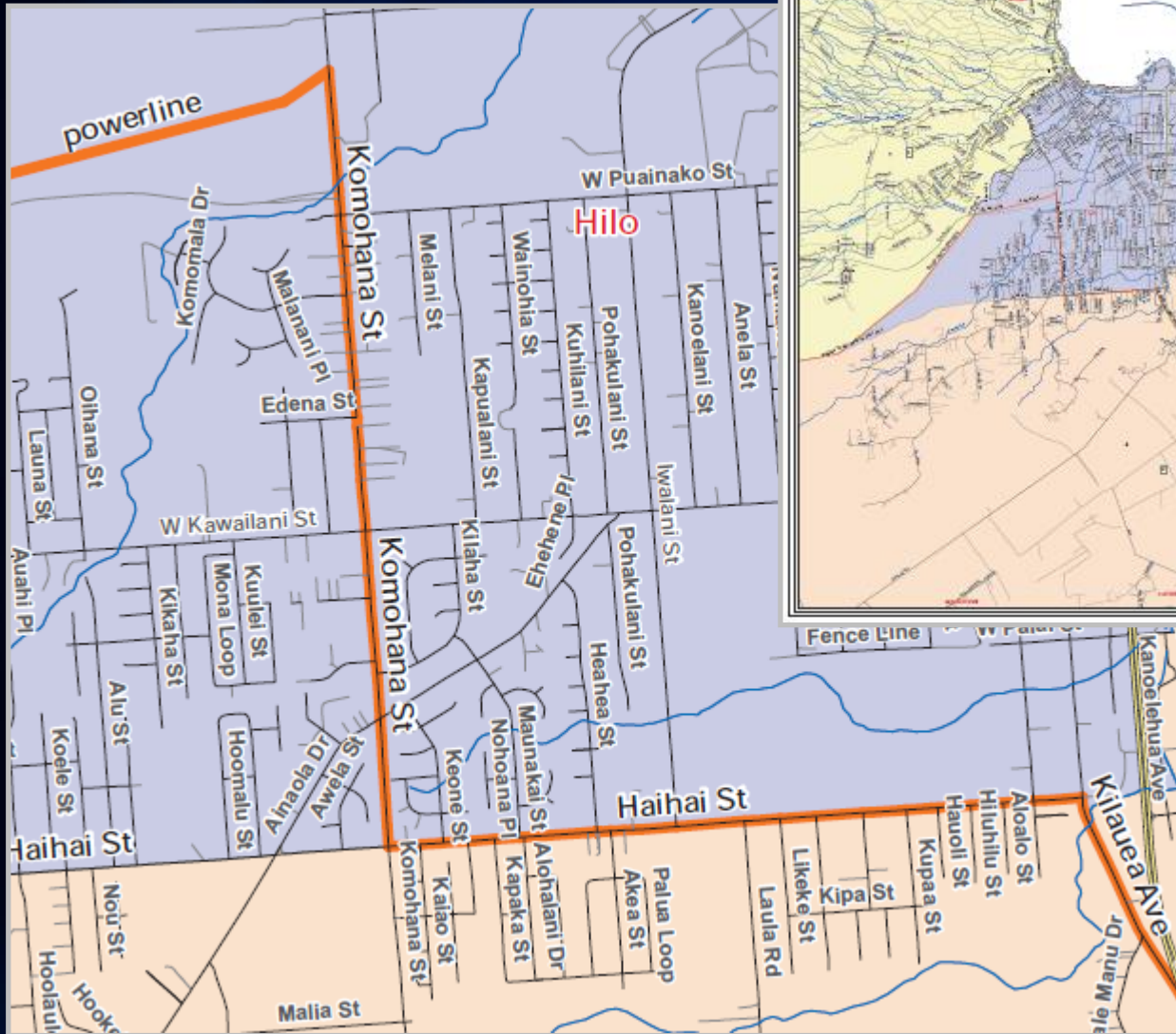
### Proposed Plans (Large Scale Maps)

HAWAII	MAUI	KAUAI	OAHU
UNIT	UNIT	UNIT	UNIT - H1
REGION 1 	REGION 1	REGION 1	REGION 1
REGION 2	REGION 2	REGION 2	REGION 2
REGION 3	REGION 3		REGION 3
REGION 4	REGION 4		REGION 4

# Proposed Plans – Static PDFs



# Proposed Plans – Static PDFs




# Proposed Plans – Online Map for Viewing

<http://hawaii.gov/elections/reapportionment>

## REDISTRICTING AND REAPPORTIONMENT

Redistricting and reapportionment are the processes used to ensure each political district has been created equally.

### State of Hawaii 2011 Legislative Reapportionment Plan

- [View State of Hawaii 2011 Legislative Reapportionment Plan](#)
- [Hawaii Reapportionment - Proposed Senate and House Districts](#) 
- [Proposed Plan Maps - Locations for Public Inspection](#)

### Reapportionment Project Office: Contact Information


**Address:**

State Capitol  
415 South Beretania Street, Rm #445  
Honolulu, HI 96813

**Telephone:** (808) 586-4100

**Toll Free:** (877) 854-6749

**Fax:** (808) 586-4105

**Email:**  [reapportionment@hawaii.gov](mailto:reapportionment@hawaii.gov)

# Proposed Plans – Online Map for Viewing

ArcGIS      GALLERY      MAP      GROUPS      MY CONTENT      Find

## Hawaii Reapportionment - Proposed Senate and House Districts



Hawaii Reapportionment - Proposed Senate and House Districts  
As proposed by the Hawaii Reapportionment Commission on August 5, 2011  
Web Mapping Application by royce (last modified: August 6, 2011)  
☆☆☆☆☆ (0 ratings, 23 views)

 Facebook  Twitter

Open ▾     Share     Edit     Delete     Move To ▾     Attach Code

**Description** **Comments (0)**

Senate and House districts as proposed by the Hawaii Reapportionment Commission on August 5, 2011. Public hearings will be Aug 30 - Sep 16.

**Access and Use Constraints**

# Proposed Plans – Online Map for Viewing

ArcGIS GALLERY MAP GROUPS MY CONTENT Find

Hawaii

## Hawaii Reapportionment - Proposed Senate and House Districts

Legend

HRC Proposed Aug 5

- Proposed senate
- Proposed house

Open

Description

Senate and August 5, 2

Access and

bing

esri

A map from: royce

# Proposed Plans – Online Map for Viewing

ArcGIS      GALLERY      MAP      GROUPS      MY CONTENT      Find

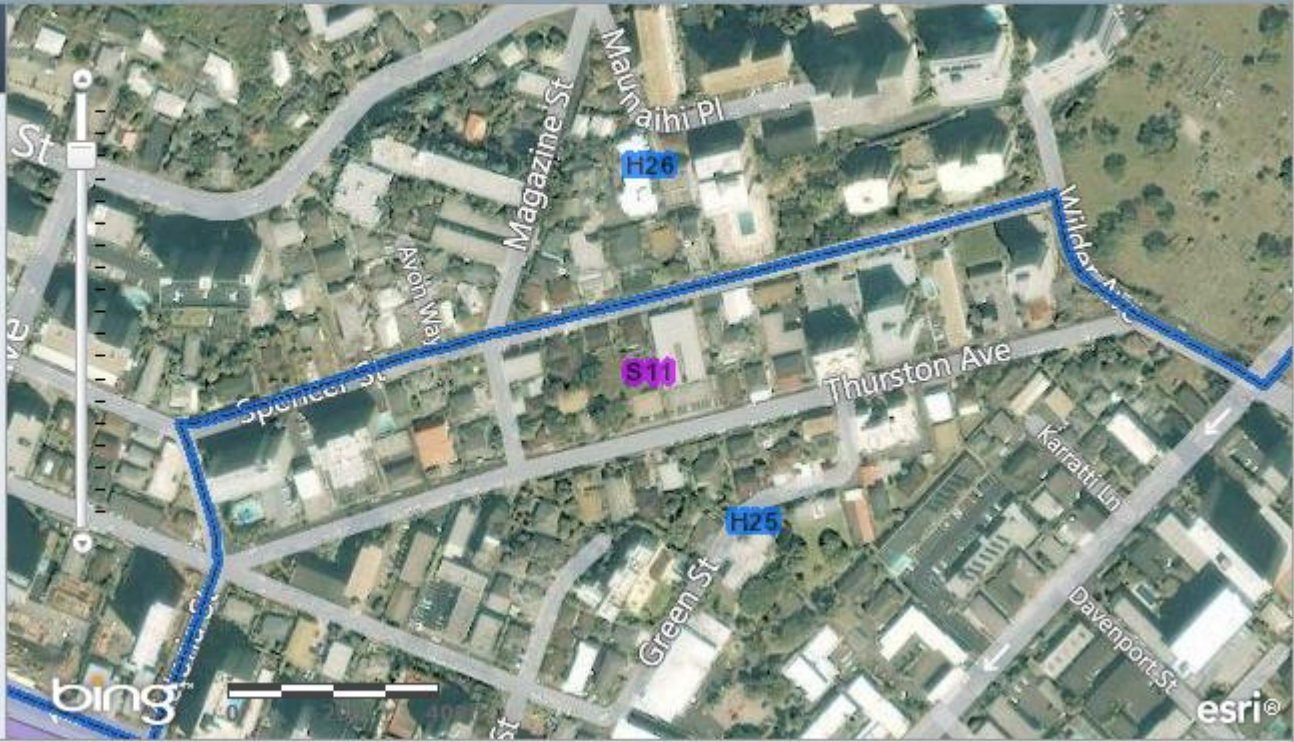
## Hawaii

### Hawaii Reapportionment - Proposed Senate and House Districts

**Legend**

HRC Proposed Aug 5

- Proposed senate 
- Proposed house 



bing      esri®

A map from: royce

**Description**  
Senate and August 5, 2

**Access and**



# Proposed Plans – Online Map for Viewing

ArcGIS GALLERY MAP GROUPS MY CONTENT Find

Hawaii

## Hawaii Reapportionment - Proposed Senate and House Districts

**Legend**

HRC Proposed Aug 5

- Proposed senate
- Proposed house

Map labels: Hilo Bay, Kuhio Bay, Lili'okalani Gardens, Wailoa River State Park, Hoolulu Park, Hawaii B. Rd, Highway 19, Highway 200, H01, S01, Maikalihi St, Anaaulu Rd, Mokuole St, Ponehawai St, Mohouli St, Manono St, Hawaii Belt Rd, Leilan St, S. Wilshire St, S. Wilshire St, Air, esri, bing.

Description: Senate and August 5, 2

Access and

A map from: royce

# Proposed Plans – Online Map for Viewing

ArcGIS GALLERY MAP GROUPS

## Hawaii Reapportionment - Proposed Senate and House Districts

As proposed by the Hawaii Reapportionment Commission. Web Mapping Application by royce (last modified: August 5, 2011). ☆☆☆☆☆ (0 ratings, 23 views)

Facebook Twitter

Open Share Edit Delete Move To Attach Code

### Description

Senate and House districts as proposed by the Hawaii Reapportionment Commission August 5, 2011. Public hearings will be Aug 30 - Sep 16.

### Access and Use Constraints

Available on the App Store

for Windows Phone 7

App for Android—expected later this year



# Proposed Plans – Online Map for Viewing

ArcGIS      GALLERY      MAP      GROUPS

## Hawaii Reapportionment - Proposed Senate and House Districts

As proposed by the Hawaii Reapportionment Commission. Web Mapping Application by royce (last modified: August 5, 2011). (0 ratings, 23 views)

Facebook    Twitter

Open    Share    Edit    Delete    Move To    Attach Code

### Description

Senate and House districts as proposed by the Hawaii Reapportionment Commission August 5, 2011. Public hearings will be Aug 30 - Sep 16.

### Access and Use Constraints

Available on the **App Store**

for Windows Phone 7

**App for Android**—expected later this year



# Proposed Plans – Online Map for Viewing

ArcGIS      GALLERY      MAP      GROUPS

## Hawaii Reapportionment - Proposed Senate and House Districts

As proposed by the Hawaii Reapportionment Commission. Web Mapping Application by royce (last modified: August 5, 2011). ☆☆☆☆☆ (0 ratings, 23 views)

Facebook    Twitter

Open    Share    Edit    Delete    Move To    Attach Code

### Description

Senate and House districts as proposed by the Hawaii Reapportionment Commission August 5, 2011. Public hearings will be Aug 30 - Sep 16.

### Access and Use Constraints



# Proposed Plans – Online Map for Viewing

ArcGIS      GALLERY      MAP      GROUPS

## Hawaii Reapportionment - Proposed Senate and House Districts

Hawaii Reapportionment - Proposed Senate and House Districts  
As proposed by the Hawaii Reapportionment Commission. Web Mapping Application by royce (last modified: August 5, 2011). (0 ratings, 23 views)



Facebook    Twitter

Open    Share    Edit    Delete    Move To    Attach Code

**Description**

Senate and House districts as proposed by the Hawaii Reapportionment Commission. August 5, 2011. Public hearings will be Aug 30 - Sep 16.

**Access and Use Constraints**



# Proposed Plans – Online Map for Viewing

ArcGIS      GALLERY      MAP      GROUPS

## Hawaii Reapportionment - Proposed Senate and House Districts

Hawaii Reapportionment - Proposed Senate and House Districts  
As proposed by the Hawaii Reapportionment Commission  
Web Mapping Application by royce (last modified: August 5, 2011)  
☆☆☆☆☆☆ (0 ratings, 23 views)

Facebook    Twitter

Open    Share    Edit    Delete    Move To    Attach Code

### Description

Senate and House districts as proposed by the Hawaii Reapportionment Commission on August 5, 2011. Public hearings will be Aug 30 - Sep 16.

### Access and Use Constraints



# Proposed Plans – Online Map for Viewing

ArcGIS      GALLERY      MAP      GROUPS

## Hawaii Reapportionment - Proposed Senate and House Districts

As proposed by the Hawaii Reapportionment Commission. Web Mapping Application by royce (last modified: August 5, 2011). ☆☆☆☆☆ (0 ratings, 23 views)

Facebook    Twitter

Open    Share    Edit    Delete    Move To    Attach Code

### Description

Senate and House districts as proposed by the Hawaii Reapportionment Commission. August 5, 2011. Public hearings will be Aug 30 - Sep 16.

### Access and Use Constraints



# Proposed Plans – Online Map for Viewing

ArcGIS      GALLERY      MAP      GROUPS

## Hawaii Reapportionment - Proposed Senate and House Districts

As proposed by the Hawaii Reapportionment Commission. Web Mapping Application by royce (last modified: August 5, 2011). ☆☆☆☆☆ (0 ratings, 23 views)

Facebook    Twitter

Open    Share    Edit    Delete    Move To    Attach Code

### Description

Senate and House districts as proposed by the Hawaii Reapportionment Commission. Public hearings will be Aug 30 - Sep 16.

### Access and Use Constraints



# Proposed Plans – Online Map for Viewing

ArcGIS GALLERY MAP GROUPS

## Hawaii Reapportionment - Proposed Senate and House Districts

Hawaii Reapportionment - Proposed Senate and House Districts  
As proposed by the Hawaii Reapportionment Commission  
Web Mapping Application by royce (last modified: August 5, 2011)  
☆☆☆☆☆☆ (0 ratings, 23 views)

Facebook Twitter

Open Share Edit Delete Move To Attach Code

### Description

Senate and House districts as proposed by the Hawaii Reapportionment Commission August 5, 2011. Public hearings will be Aug 30 - Sep 16.

### Access and Use Constraints



# Proposed Plans – Online Map for Editing



## Welcome to the Hawai'i Redistricting Online Application!

Hawai'i Redistricting Online assists the Hawai'i State Reapportionment Commission, State Reapportionment Advisory Councils, advocacy groups, and the general public in drawing legislative and congressional redistricting plans following the 2010 U.S. Census. This ArcGIS software platform and pertinent dataset components provide comprehensive features and functionality for plan management, visualization, editing, and community collaboration.

In establishing the boundaries of the districts, the Hawai'i Reapportionment Commission will give consideration to the following factors: (a) population deviation from ideal district targets (b) cohesiveness, contiguity, integrity, and compactness of territory, and (c) socio-economic interests of the districts.

Plans submitted by Advisory Councils or the public prior to July 26, 2011 will be reviewed by the Commission before their proposed plan is published. There will be time for the Commission to receive and review additional plans while the proposed plan is being reviewed in the public hearing phase. Plans submitted by Advisory Councils or the public on or after July 26, 2011 and prior to the last public hearing date (no later than September 16, 2011), will be reviewed by the Commission after the final plan is published.

**HAWAII COUNTY COUNCIL NOTICE:** You may use this application to create a plan for Hawai'i County Council, HOWEVER, you must follow the directions provided by the Hawai'i County Redistricting Commission for submitting plans. DO NOT USE THE "SUBMIT" BUTTON. The State of Hawai'i Reapportionment Commission is not responsible for Hawai'i County Council plans.

### How to use this tool:



<https://redistricting.hawaii.gov/>

# Proposed Plans – Online Map for Editing



## Choose Template Plan

Choose a template plan:

Plan Name	Description
Hawaii Congress (H-1) - Proposed	Proposed Hawaii Congress (H-1) plan as published by the Hawaii Reapportionment Commr
Hawaii Congress (Wheeler) - Proposed	Proposed Hawaii Congress (Wheeler) plan as published by the Hawaii Reapportionment C
Hawaii Senate - Proposed	Proposed Hawaii Senate plan as published by the Hawaii Reapportionment Commission.
Hawaii House - Proposed	Proposed Hawaii House plan as published by the Hawaii Reapportionment Commission.
Hawaii Council - Existing	County of Hawaii Council template using existing (2001-2010) district boundaries.
Maui Senate - Proposed	Proposed Maui Senate plan as published by the Hawaii Reapportionment Commission.
Maui House - Proposed	Proposed Maui House plan as published by the Hawaii Reapportionment Commission.
Honolulu Senate - Proposed	Proposed Honolulu Senate plan as published by the Hawaii Reapportionment Commission
Honolulu House - Proposed	Proposed Honolulu House plan as published by the Hawaii Reapportionment Commission.
Kauai House - Proposed	Proposed Kauai House plan as published by the Hawaii Reapportionment Commission.

OK

Cancel

# Proposed Plans – Public Plans



**270 accounts created**  
**17 public plans submitted by Aug 16**

Congress	1 plan
Honolulu Senate	2 plans
Honolulu House	4 plans
Hawaii Senate	7 plans
Hawaii House	2 plans
Kauai House	1 plan

# Commission Schedule – Public Hearings

<b>Aug 30</b>	<b>West Oahu</b>	<b>6:00 pm</b>	<b>Kapolei High School Cafeteria</b>
<b>Aug 31</b>	<b>Central Maui</b>	<b>5:30 pm</b>	<b>Maui Waena Intermediate School Cafeteria</b>
<b>Sep 1</b>	<b>West Maui</b>	<b>5:30 pm</b>	<b>Lahaina Civic Center</b>
<b>Sep 2</b>	<b>Kauai</b>	<b>5:30 pm</b>	<b>Kauai Council Chamber</b>
<b>Sep 6</b>	<b>Windward Oahu</b>	<b>6:00 pm</b>	<b>Aikahi Elementary School Cafeteria</b>
<b>Sep 7</b>	<b>Honolulu</b>	<b>6:00 pm</b>	<b>State Capitol Auditorium</b>
<b>Sep 8</b>	<b>Central Oahu</b>	<b>6:00 pm</b>	<b>Mililani High School Cafeteria</b>
<b>Sep 9</b>	<b>Lanai</b>	<b>5:00 pm</b>	<b>Lanai High School</b>
<b>Sep 12</b>	<b>Molokai</b>	<b>5:00 pm</b>	<b>Kaunakakai School Cafeteria</b>
<b>Sep 13</b>	<b>East Hawaii</b>	<b>5:00 pm</b>	<b>Hilo Council Chamber</b>
<b>Sep 14</b>	<b>West Hawaii</b>	<b>5:00 pm</b>	<b>Kona Council Chamber</b>
<b>Sep 15</b>	<b>Leeward Oahu</b>	<b>6:00 pm</b>	<b>Waipahu High School Cafeteria</b>
<b>Sep 16</b>	<b>East Oahu</b>	<b>6:00 pm</b>	<b>Kalani High School Cafeteria</b>