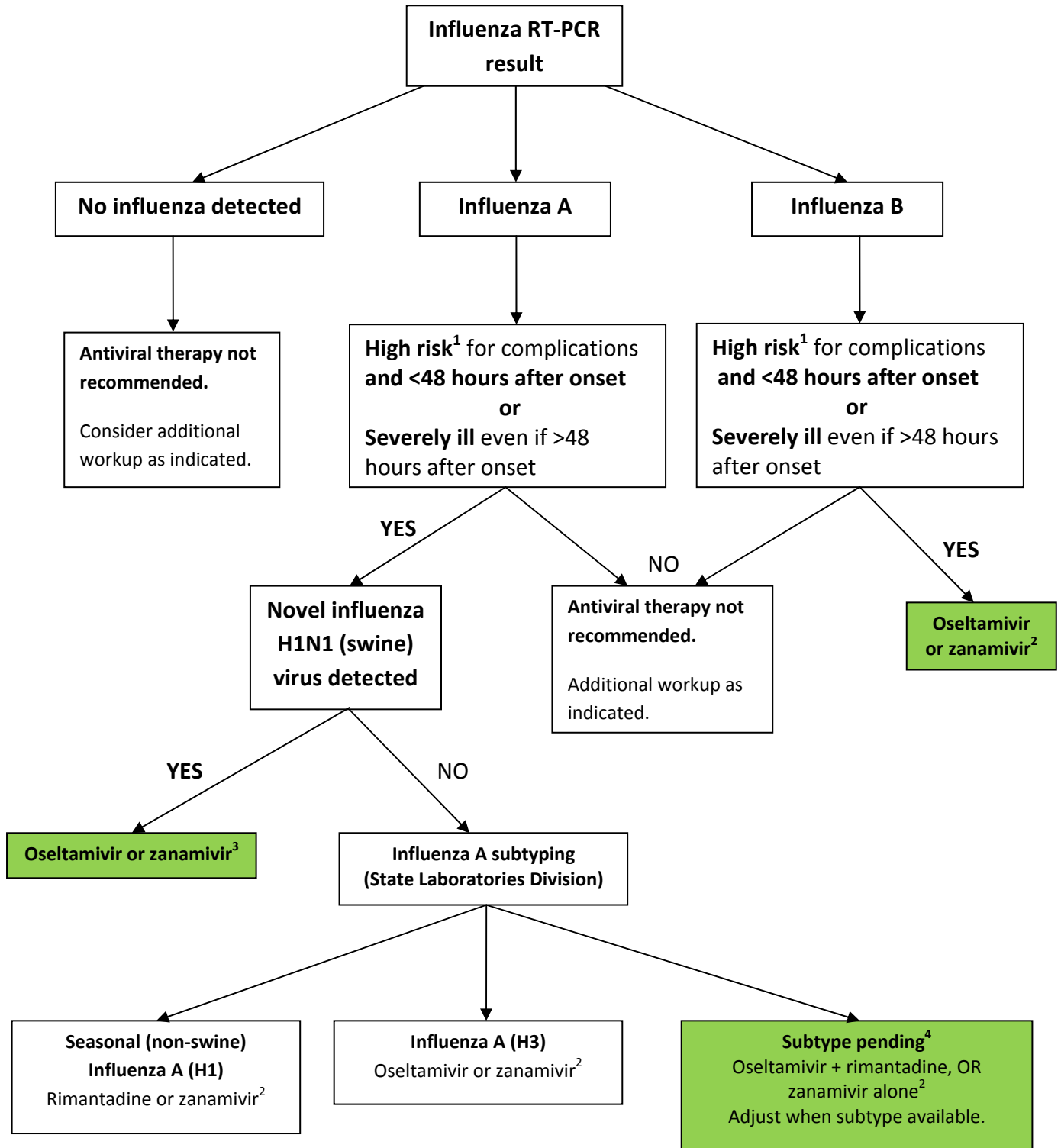


**Hawai'i Department of Health
Algorithm for Selecting Influenza Antiviral Therapy
during Novel Influenza H1N1 (swine flu) Outbreak**



¹Persons at high risk for complications include those aged <5 years or ≥65 years, are pregnant, and/or have chronic medical conditions (e.g. diabetes, asthma, emphysema or kidney, liver or heart disease).

²CDC *Interim Antiviral Guidance for 2008–9 [Seasonal Influenza]*. <http://www.cdc.gov/flu/professionals/antivirals/index.htm>

³CDC *Interim Guidance on Antiviral Recommendations for Patients with Novel Influenza A (H1N1) Virus Infection and Their Close Contacts*. <http://www.cdc.gov/h1n1flu/recommendations.htm>

⁴During the current novel H1N1 influenza U.S. outbreak, HDOH State Laboratories will hold all non-novel H1N1 but RT-PCR positive influenza specimens for subtyping and characterization at a later date.