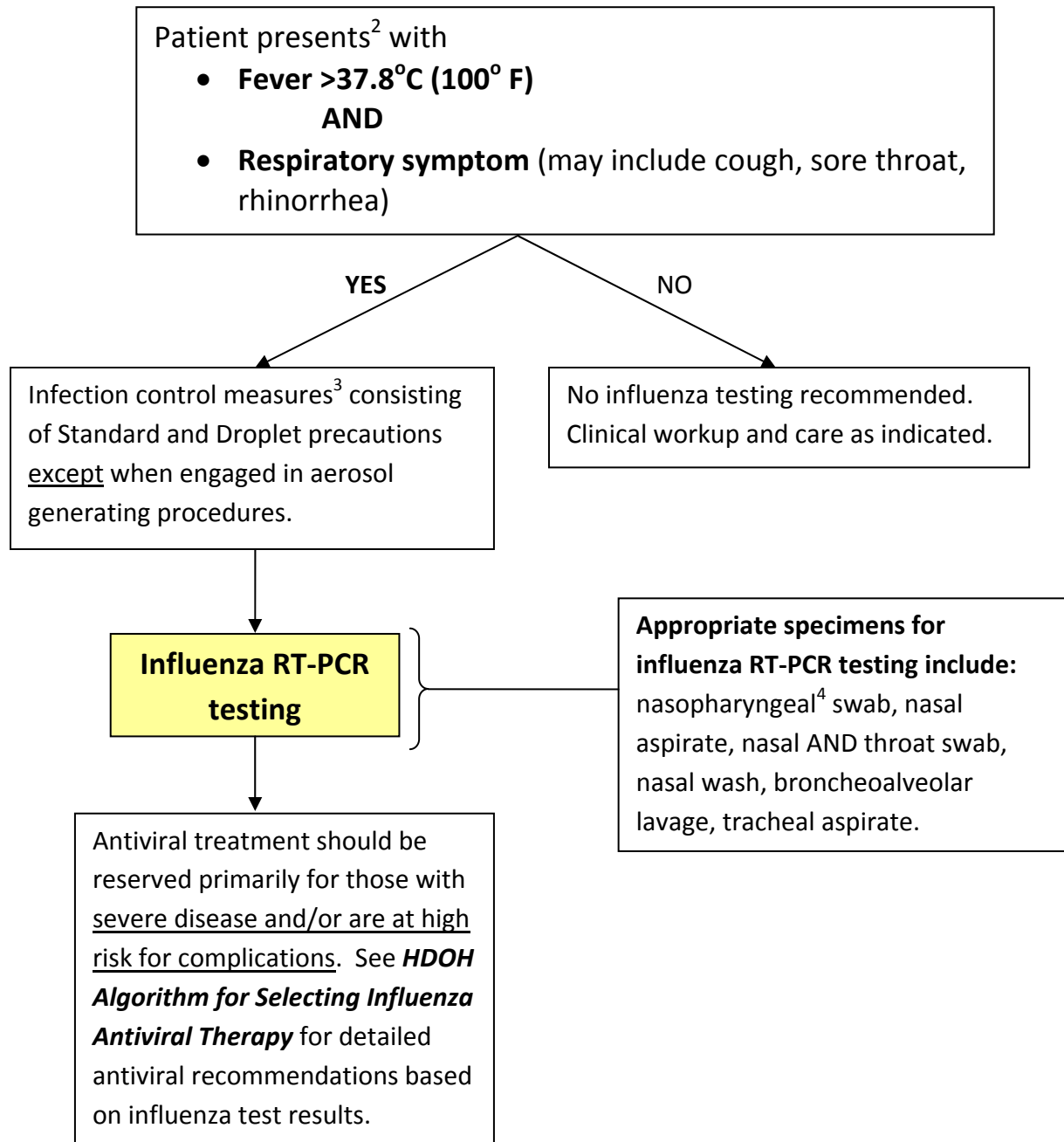


**Hawai'i Department of Health**  
**Interim<sup>1</sup> Diagnostic Algorithm for Influenza-Like Illness**  
**during Novel Influenza H1N1 (swine flu) Community Transmission**



<sup>1</sup>These interim guidelines are subject to change as the current situation rapidly evolves.

<sup>2</sup> As with seasonal or regular influenza, infants, adults ≥65 years-old, and persons with compromised immune systems may have atypical presentations. Clinicians may want to consider influenza in the differential diagnosis of those presenting with fever and sepsis-like syndrome and/or acute respiratory distress syndrome.

<sup>3</sup> Refer to the World Health Organization (WHO) Infection Prevention and Control in Healthcare guidance (includes recommendations on use of masks and respirators in healthcare settings) at: [http://www.who.int/csr/resources/publications/infection\\_control/en/index.html](http://www.who.int/csr/resources/publications/infection_control/en/index.html).

<sup>4</sup>Nasopharyngeal swabs are preferred over nasal or oral swabs. Guidance on specimen collection is available at: <http://www.cdc.gov/h1n1flu/specimencollection.htm>.