

# HAWAII STATE DEPARTMENT OF HEALTH DISEASE OUTBREAK CONTROL DIVISION

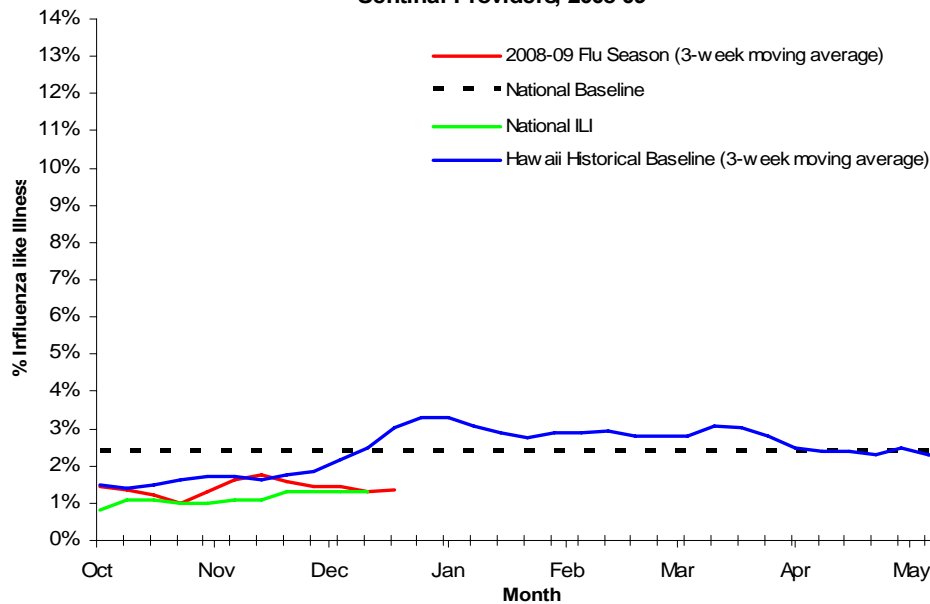
## Influenza Surveillance Report

December 14, 2008-December 20, 2008: MMWR<sup>1</sup> Week 51

### I. Surveillance of Influenza Like Illness (ILI):

During week 51 of the 2008-09 influenza year, 1.4% (95% CI 0.6–2.3%) of patient visits to Hawaii's Sentinel Providers was due to influenza-like illness (ILI). This ILI does not exceed Hawaii's historical ILI baseline<sup>2</sup> for week 51 ( $p < 0.05$ ). The percent ILI reported during week 50 of the current flu year (1.3%, CI 0.7-1.9%) was comparable to the national ILI for week 50 (1.3%) but lower than the national baseline<sup>3</sup> (2.4%).

Percentage of Visits for Influenza Like Illness (ILI) Reported by Hawaii  
Sentinel Providers, 2008-09



### II. Pneumonia and Influenza (P&I) Related Mortality:

During week 51, 7.8% (95% CI 1.8-13.8%) of all deaths in Honolulu, Hawaii were due to pneumonia or influenza. This P&I does not exceed Hawaii's historical P&I baseline<sup>2</sup> for week 51. Honolulu's P&I for week 50 (6.5% CI 1.5-11.4%) was comparable to the national P&I for week 50 (6.8%) and the epidemic threshold (7.3%).

#### *Influenza Associated Pediatric Mortality*<sup>4</sup>

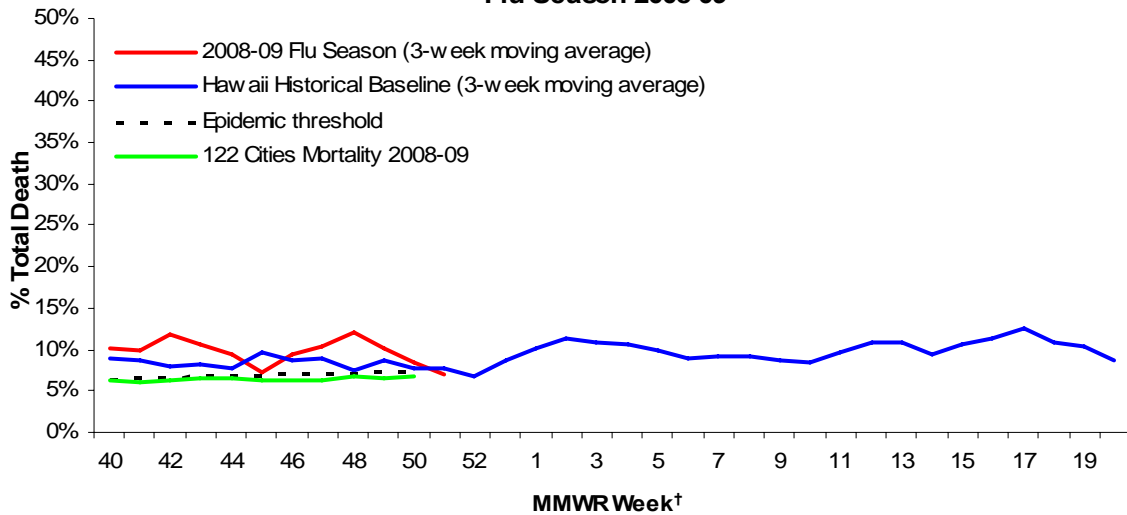
There have been no influenza-associated pediatric deaths in Hawaii, and one reported in the United States during the current influenza season.

<sup>1</sup> MMWR stands for 'Morbidity and Mortality Weekly Report,' conventionally used by the Centers for Disease Control (CDC). The weeks of a flu season are often referred to by their respective MMWR week. See appendix 1 for interpretation of MMWR weeks.

<sup>2</sup> The Hawaii historical baseline (%ILI and %P&I) is the average of five 3 week moving averages over the preceding five flu seasons of historical data (2002-03, 2003-04, 2004-05, 2005-06, and 2006-07).

<sup>3</sup> The National Baseline is calculated by the CDC as the mean percentage of visits for ILI during weeks 21-39 with two standard deviations. Because of large variability in regional ILI, comparison of the national baseline to local ILI may not be appropriate. It is provided in this report because no meaningful regional baselines are available for comparison.

**Pneumonia & Influenza (P&I) Related Mortality in Honolulu,  
Flu Season 2008-09**



<sup>1</sup>MMWR stands for 'Morbidity and Mortality Weekly Report,' conventionally used by the Centers for Disease Control (CDC). The weeks of a flu season are often referred to by their respective MMWR week. See appendix 1 for interpretation of MMWR weeks.

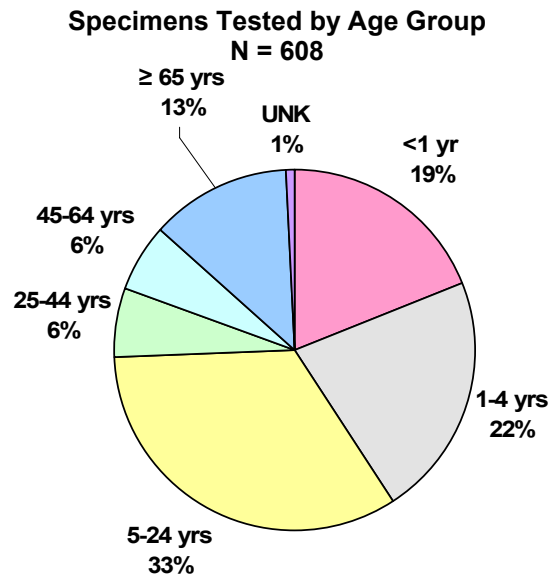
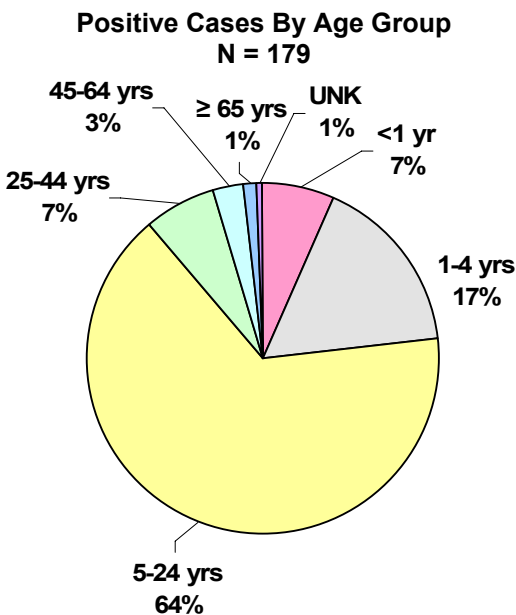
<sup>2</sup>The Hawaii historical baseline (%ILI and %P&I) is the average of five 3 week moving averages over the preceding five flu seasons of historical data (2002-03, 2003-04, 2004-05, 2005-06, and 2006-07). P&I values were not available for a few weeks in previous influenza seasons.

<sup>4</sup>These data were reported by the Hawaii State Department of Health Vital Statistics Office.

**III. Laboratory Surveillance**

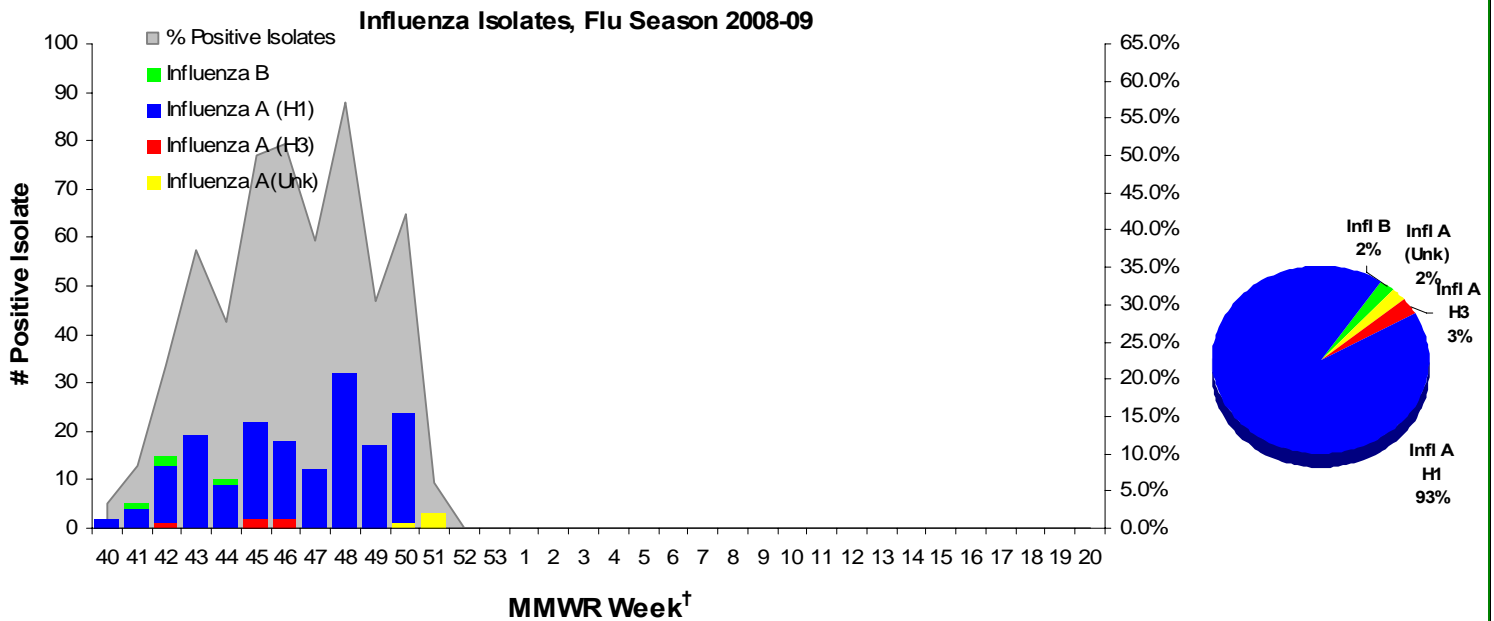
Since the beginning of the 2008-09 influenza season, Hawaii State Laboratories Division (SLD) has tested **608** specimens.

The pie charts below indicate the distribution of specimens tested and positive influenza cases in Hawaii by age group during Flu season 2008-09.

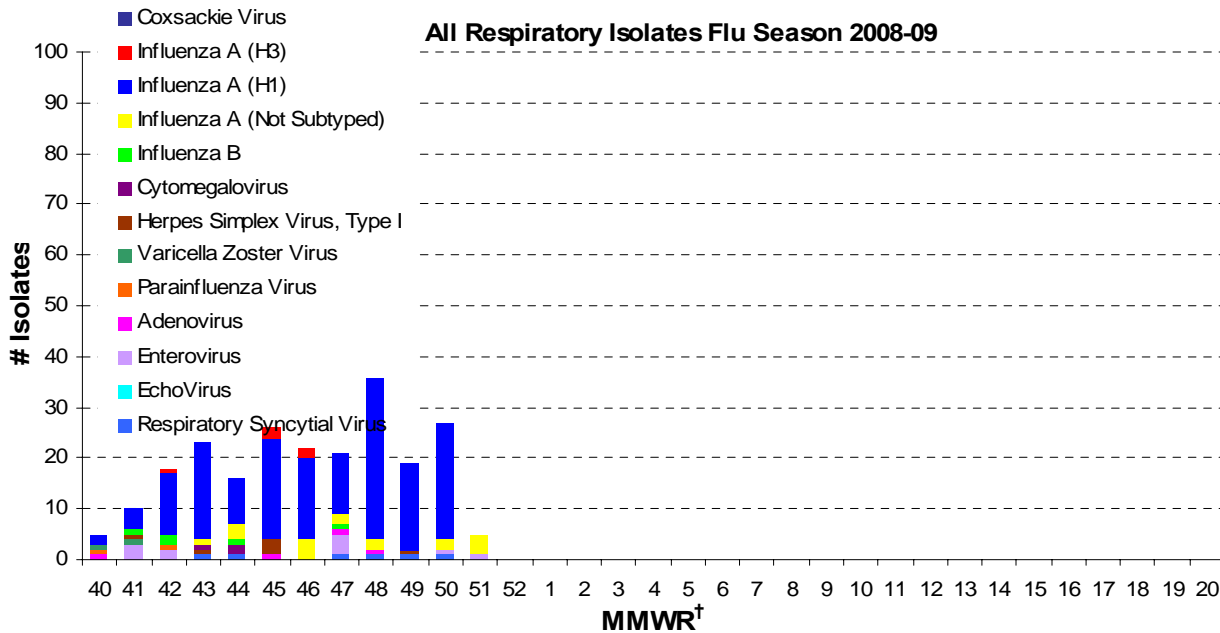


Persons 5-24 years were most likely to test positive when influenza was suspected (64% positive influenza cases versus 33% of specimens tested). Infants (<1 year old) and persons 65 years and older were least likely to be positive for influenza and likely to have other etiologies for their respiratory illness.

Of the 608 specimens tested since the beginning of the 2008-09 flu season, 179 (29.4%) influenza isolates have been detected by SLD. Of these, 4 (2%) were influenza A (subtype unknown), 166 (93%) were influenza A(H1) and 5 (3%) were influenza A(H3). There have been 4 (2%) influenza B cases. Select isolates were sent to CDC for strain characterization.



\*All results preliminary– Subject to final review and change



Data courtesy of State Laboratories Division and Tripler Army Medical Center, Honolulu, Hawaii

\*All results preliminary– Subject to final review and change

<sup>1</sup>MMWR stands for 'Morbidity and Mortality Weekly Report,' conventionally used by the Centers for Disease Control (CDC). The weeks of a flu season are often referred to by their respective MMWR week. See appendix 1 for interpretation of MMWR weeks.

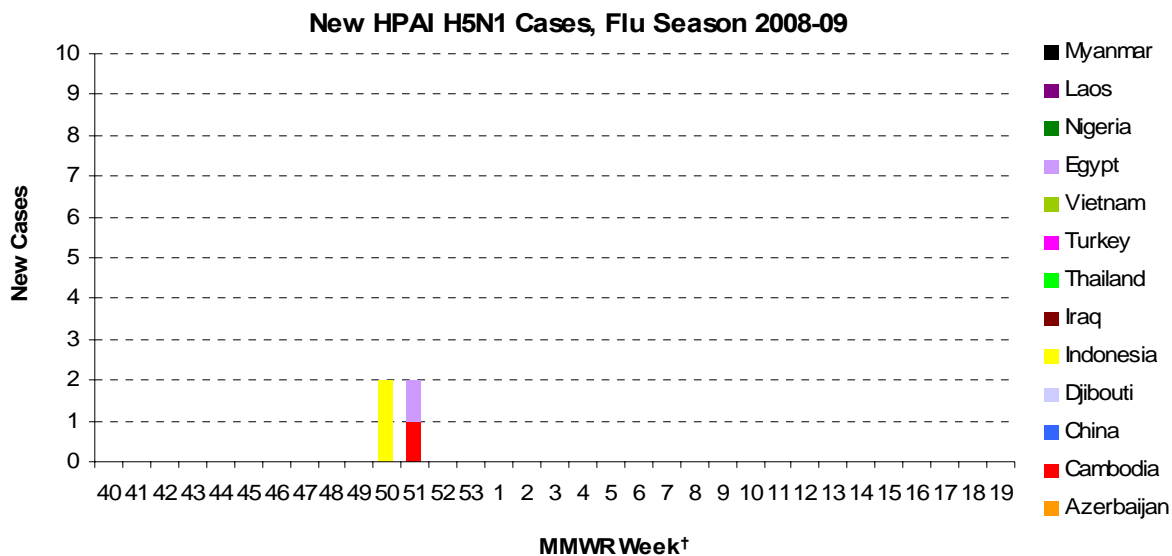
**IV. Clustered ILI Activity**

One school on Oahu reported ILI activity during week 50. Specimens were collected and the presence of influenza A(H1) has been confirmed.

**V. Avian Influenza – Last Updated December 16, 2008**

Country	2003		2004		2005		2006		2007		2008		Total	
	cases	deaths	cases	deaths	cases	deaths	cases	deaths	cases	deaths	cases	deaths	cases	deaths
Azerbaijan	0	0	0	0	0	0	8	5	0	0	0	0	8	5
Bangladesh	0	0	0	0	0	0	0	0	0	0	1	0	1	0
Cambodia	0	0	0	0	4	4	2	2	1	1	1	0	8	7
China	1	1	0	0	8	5	13	8	5	3	3	3	30	20
Djibouti	0	0	0	0	0	0	1	0	0	0	0	0	1	0
Egypt	0	0	0	0	0	0	18	10	25	9	8	4	51	23
Indonesia	0	0	0	0	20	13	55	45	42	36	22	18	139	113
Iraq	0	0	0	0	0	0	3	2	0	0	0	0	3	2
Laos	0	0	0	0	0	0	0	0	2	2	0	0	2	2
Myanmar	0	0	0	0	0	0	0	0	1	0	0	0	1	0
Nigeria	0	0	0	0	0	0	0	0	1	1	0	0	1	1
Pakistan	0	0	0	0	0	0	0	0	3	1	0	0	3	1
Thailand	0	0	17	12	5	2	3	3	0	0	0	0	25	17
Turkey	0	0	0	0	0	0	12	4	0	0	0	0	12	4
Viet Nam	3	3	29	20	61	19	0	0	8	5	5	5	106	52
<b>Total</b>	<b>4</b>	<b>4</b>	<b>46</b>	<b>32</b>	<b>98</b>	<b>43</b>	<b>115</b>	<b>86</b>	<b>73</b>	<b>58</b>	<b>40</b>	<b>30</b>	<b>391</b>	<b>247</b>

Total number of cases includes number of deaths. WHO reports only laboratory-confirmed cases. All dates refer to onset of illness.



<sup>1</sup>MMWR stands for 'Morbidity and Mortality Weekly Report,' conventionally used by the Centers for Disease Control (CDC). The weeks of a flu season are often referred to by their respective MMWR week. See appendix 1 for interpretation of MMWR weeks.

**Appendix 1: MMWR Week**

Please refer to the table below to interpret data presented by MMWR week.

Week Ending	MMWR	Week Ending	MMWR
10/4/2008	40	4/11/2009	14
10/11/2008	41	4/18/2009	15
10/18/2008	42	4/25/2009	16
10/25/2008	43	5/2/2009	17
11/1/2008	44	5/9/2009	18
11/8/2008	45	5/16/2009	19
11/15/2008	46	5/23/2009	20
11/22/2008	47	5/30/2009	21
11/29/2008	48	6/6/2009	22
12/6/2008	49	6/13/2009	23
12/13/2008	50	6/20/2009	24
12/20/2008	51	6/27/2009	25
12/27/2008	52	7/4/2009	26
1/3/2009	53	7/11/2009	27
1/10/2009	1	7/18/2009	28
1/17/2009	2	7/25/2009	29
1/24/2009	3	8/1/2009	30
1/31/2009	4	8/8/2009	31
2/7/2009	5	8/15/2009	32
2/14/2009	6	8/22/2009	33
2/21/2009	7	8/29/2009	34
2/28/2009	8	9/5/2009	35
3/7/2009	9	9/12/2009	36
3/14/2009	10	9/19/2009	37
3/21/2009	11	9/26/2009	38
3/28/2009	12	10/3/2009	39
4/4/2009	13		