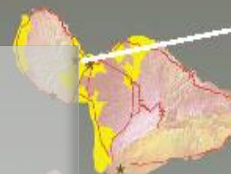
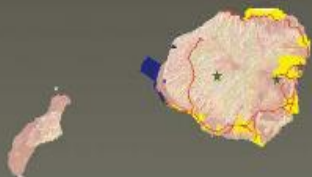


DoD IN HAWAII



Pearl Harbor Naval Shipyard

Pearl Harbor Naval Shipyard is Hawaii's regional maintenance center for the U.S. Navy. Naval Station Pearl Harbor provides service comparable to a large city. Operating the Navy's busiest harbor, the Naval Station annually completes 65,000 boat runs and transports 2.4 million passengers and 200,000 vehicles to and from Ford Island and other harbor locations.



Photo: SGT Barrett Ishle/MCS: 15U.S. Co. 1-171st AVN
Hawaii Army National Guard

The Hawaii Army National Guard

The Hawaii Army National Guard serves as an integral component of the Total Army by providing well-equipped units that can respond to any national contingency. It is composed of the 29th Infantry Brigade Combat Team, the 103rd Troop Command, and the 298th Regiment-Multifunctional, Regional Training Institute. Army National Guard units are located in communities on the islands of Hawaii, Maui, Oahu, Molokai, and Kauai.

Hawaii is a macrocosm
Hawaii is Joint
Hawaii is distributed
Hawaii has a complicated past
Hawaii is unsustainable
Hawaii has enormous resources



Schofield Barracks

Schofield Barracks is the largest Army post in Hawaii. The area includes Wheeler Army Airfield and the Healemano Military Reservation. Two brigades of the 25th Infantry Division (Light) and the units necessary to support them are housed here.



Fort Shafter

Fort Shafter is the focal point for command, control, and support of the Army forces in the Asia-Pacific region. It is the oldest military base on Oahu and has been home to the senior Army Headquarters in Hawaii for a century.



Hickam Air Force Base

Hickam Air Force Base, Hawaii is home to the 15th Airlift Wing (15AW), the Pacific Air Forces Headquarters and the Hawaii Air National Guard. Today, the 15AW remains the launch point of strategic air mobility and operational missions in support of the Global War on Terrorism.



Tripler Army Medical Center

Tripler Army Medical Center is the only federal tertiary care hospital in the Pacific Basin. It is the largest military hospital in the Asian and Pacific Rim region and serves a military sphere of jurisdiction that spans over 52% of the earth's surface. It supports 264,000 local active duty and retired military personnel, their families, and veteran beneficiaries.



Legend

- U.S. Army
- U.S. Navy
- U.S. Marine Corps
- U.S. Air Force
- Defense Logistics Area
- National Guard Sites
- Metro Areas



Act 234 Some Ideas

Natural carbon sequestration.

Forested lands capture carbon dioxide (CO₂). Utility companies may need to offset their CO₂ emissions. An installation could quantify its forested areas on base and sell the associated CO₂ sequestration credits to a utility. As an example of the potential value, greenhouse gas storage in forests can be as high \$2,200 per hectare.

Habitat banking.

Habitat for endangered and threatened species extends beyond the fence line. Quantifying its value allows installations to purchase or trade credits from other habitat banks in the same region. This could increase training capacity by reducing on-post endangered species restrictions. It would also allow regulators to manage species and habitats across regions.

Natural filtration.

Wetlands act as a natural filtration system. Installations could identify their ecosystem service value and use filtration credits or trade them for another environmental service needed to comply with requirements.

Pollutant cap and trade.

Regulatory bodies set overall caps on pollutants such as SO₂ and allocate pollutant baseline quantities to the producers. Producers could reduce their own emissions and sell the resulting credits, or they could purchase credits from others to avoid treatment or noncompliance costs.



Ecosystem markets can increase the value of land in a natural state, making open space or natural habitat management economically competitive with land development. They also can help control sprawl, potentially reducing encroachment.

- DBEDT update Hawaii's emissions inventory by late December of 2008
- Task Force which will report it's first targets in early 2010.
- Any new regulations would then take effect at the beginning of 2012.



“USPACOM, in partnership with the State of Hawaii, develops key strategies and implements innovative solutions to harness clean, efficient, secure, renewable and sustainable energy for the benefit of the people of Hawaii and the Asia Pacific Region.”



To accelerate this transformative process, Hawaii and U.S. DOE have joined forces to form the Hawaii Clean Energy Initiative

The goals of the initiative are as follows:

- Achieve a 70% clean energy basis for Hawaii within a generation
- Serve as a “open source” learning opportunity: Make Hawaii a replicable model for achievement of a clean energy-based economy for the world
- Increase the security of Hawaii: Diversify Hawaii’s energy supply and increase the security of its energy delivery and defense capabilities
- Create economic opportunity at all levels of society: Develop and diversify Hawaii’s economy through innovative, market-based mechanisms that allow every sector to benefit from the transition to clean energy
- Foster and demonstrate innovation: in the technology, financial, organizational and policy models used to achieve a clean energy future
- Build the workforce of the future: help Hawaii create educational and employment opportunities necessary to sustain a clean energy economy

Presidential Executive Order 13514

Thursday,

October 8, 2009

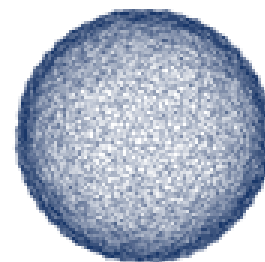
sets sustainability goals for Federal agencies and focuses on making improvements in their environmental, energy and economic performance

- Reduce greenhouse gas emissions
- Increase energy efficiency
- Reduce fleet petroleum consumption
- Conserve water
- Reduce waste
- Support sustainable communities
- Promote environmentally-responsible products and technologies

Part VII

The President

Executive Order 13514—Federal
Leadership in Environmental, Energy,
and Economic Performance



COP15
COPENHAGEN



Federal Register

Army Sustainability Campaign Plan



Sustainability Campaign Plan

Army Sustainability: Sustain the Mission, Secure the Future

Intent:

- Institutionalize sustainability in doctrine, policy, training, operations, & acquisitions
- Move from individual initiatives to enterprise-wide approaches
 - Increase cross-functional awareness, cooperation, & support
 - Synchronize efforts across all lines of operation
 - Leverage collective throw-weight & maximize efficiencies
 - Identify successful local initiatives & evaluate for Army-wide use
 - Enable assessment of impacts to focus resources & efforts
 - Enable 'up front' investments to lower total operating costs
- Instill sustainability ethic & personal commitment

W Johnsen, DAM-ISE / wanda.johnsen@us.army.mil / 705-601-1512

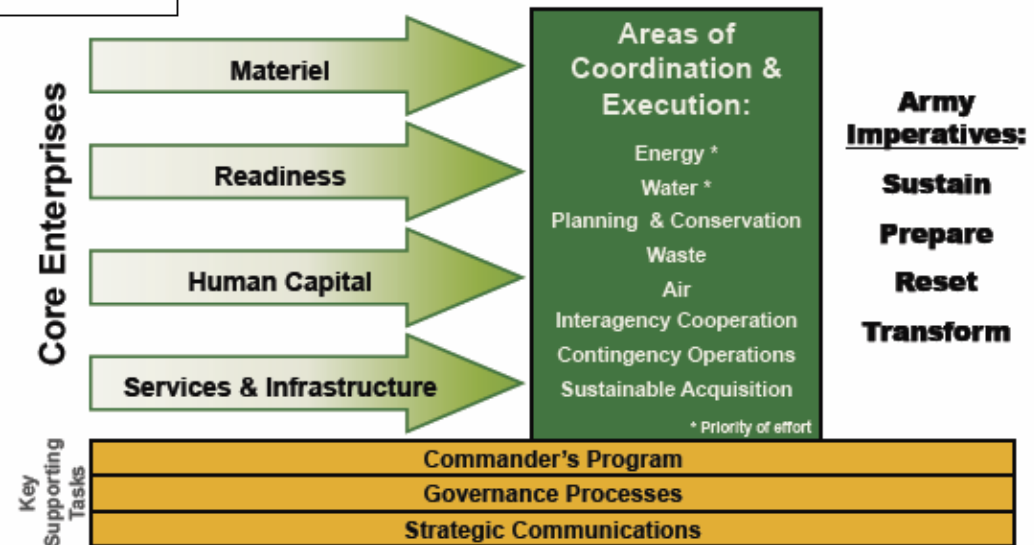
14

Campaign Plan Milestones

- 1st formal staffing: 5 Aug – 1 Sep 09
- 2nd formal staffing: Oct 09
- Publish Plan: Dec 09
- Periodic updates: as needed

Operational Design

Army Sustainability: Sustain the Mission, Secure the Future



W Johnsen, DAM-ISE / wanda.johnsen@us.army.mil / 705-601-1512

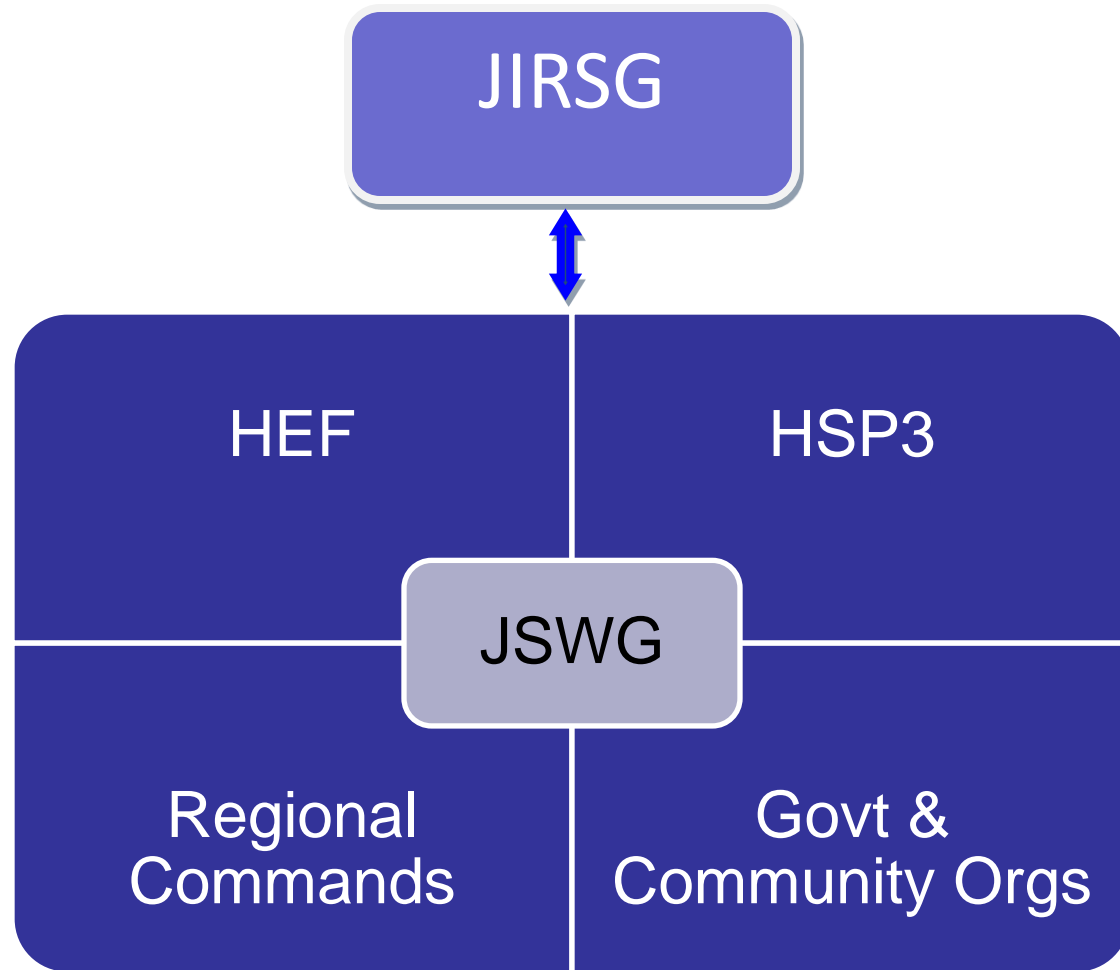
15

- *Army Strategy for the Environment* established the long-range vision for a sustainable Army
- Rising energy costs & energy security concerns brought greater interest & support beyond environmental proponent
- *Army Sustainability Campaign Plan* will leverage existing initiatives & synchronize efforts across core enterprises
- Core enterprises will track & report progress toward goals, initiatives, & actions

HI JIRSG Support

- Support creation & implementation of a collaborative framework for joint sustainability planning & management
 - Provide leadership and guidance
 - Designate a POC for JIRSG and for each service
 - Support regional modeling, analysis and decision-support
 - Provide baseline analyses of resource flows (supply & demand) including:
 - **Energy (electricity, transportation fuels, alternate & renewable energy)**
 - **Water & wastewater**
 - **Waste management**
 - Share sustainability plans & projects for potential demonstration/validation & duplication
 - Support successful outcomes reporting
-

Organizational Strategy



- JSWG works with existing groups for joint planning & initiatives.
 - JSWG receives guidance from and reports to JIRSG.
-

Hawaii in 2010

- Legislature starts 21 JAN 10
 - Likely to see bills on:
 - Makua Reserve Commission
 - Depleted Uranium
- Election year
 - Governor
 - House
 - Mayoral
- Very slow financial recovery and reduced spending
- Increased cost of energy and building materials
- Increased regulation

The Military plays a key Leadership role in Hawaii!

'A'ohē hope e ho'i mai ai.

[There is no turning back.]

Kamehameha I