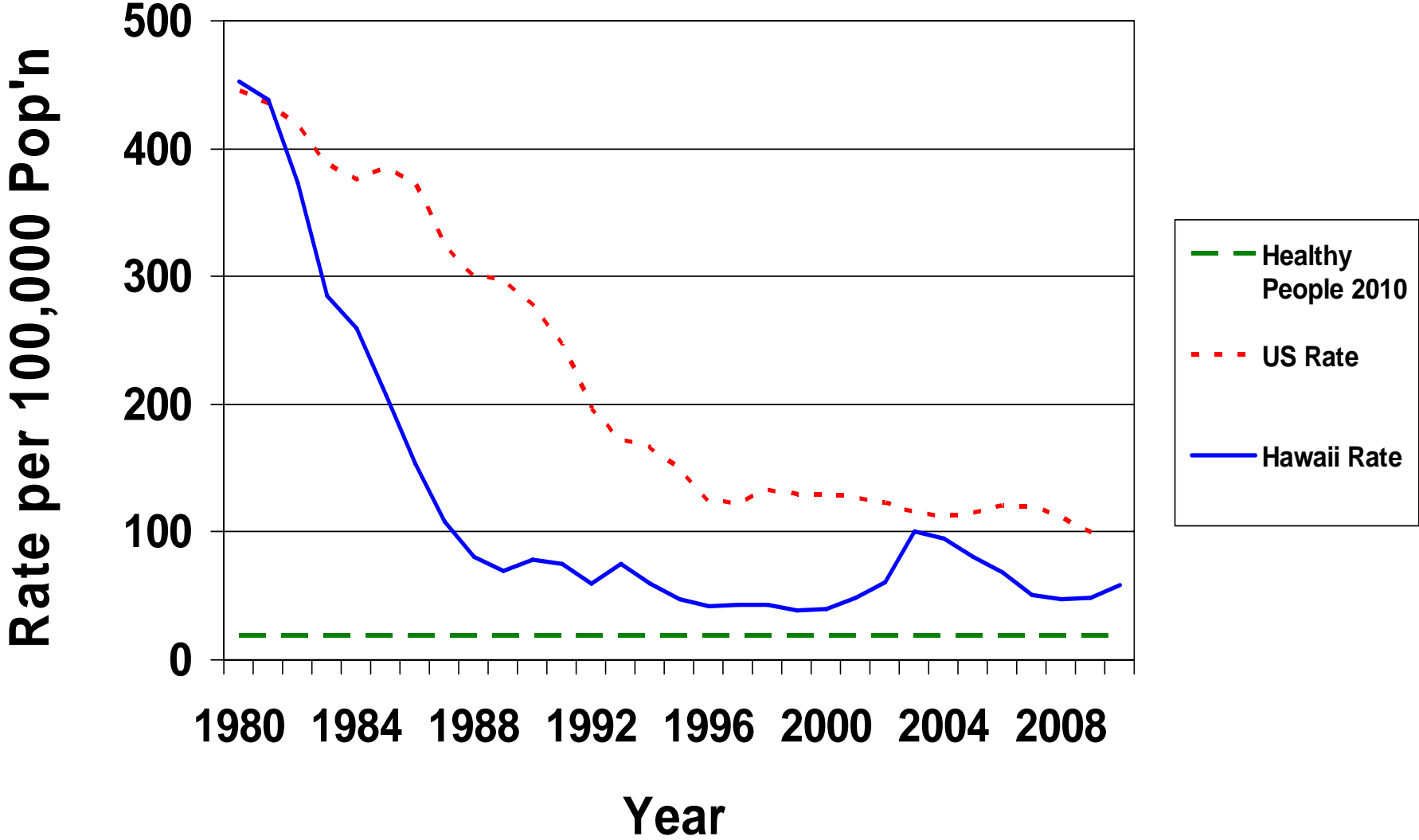
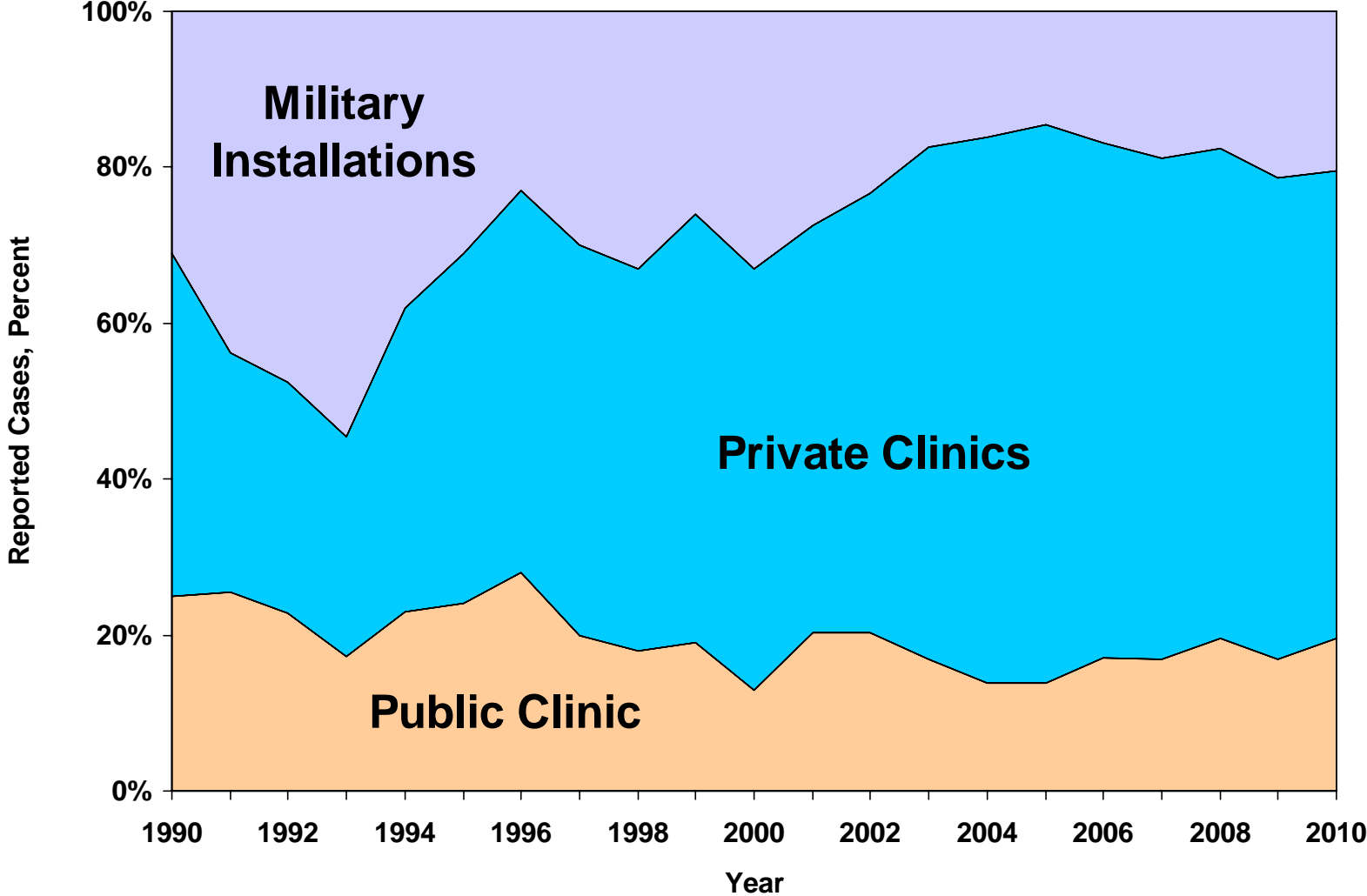


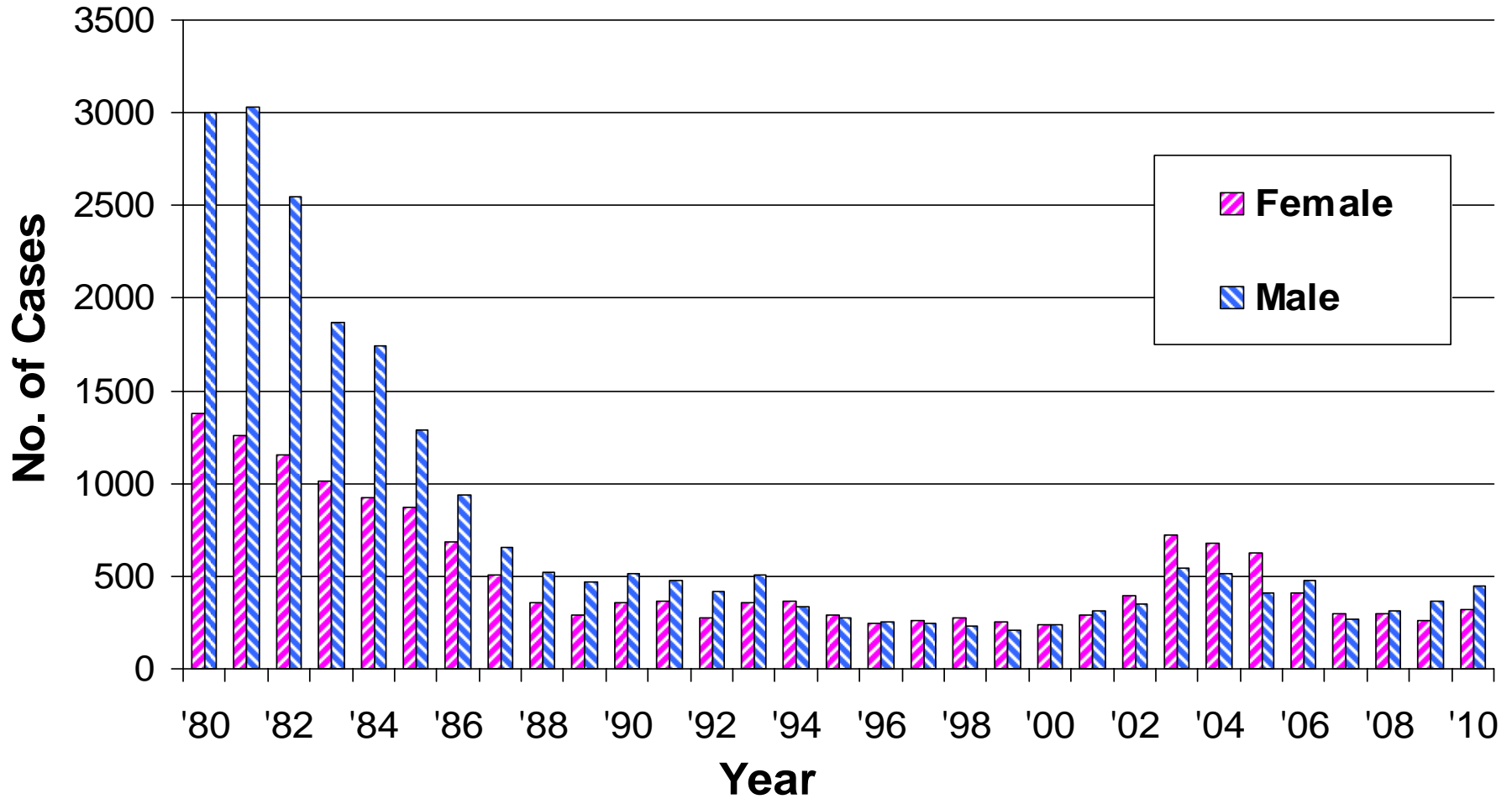
***Gonorrhea Case Rate by Year. Hawaii and U.S., 1980-2010***



# Gonorrhea Cases By Reporting Source. Hawaii, 1990- 2010.



# Gonorrhea Morbidity by Gender and Year. Hawaii, 1980 –2010



*The Hawaii DOH Gonorrhea Screening Program implemented dual testing for *N. gonorrhoeae* and *Chlamydia* using a more sensitive screening test, NAAT, in 2003. The use of this laboratory test may have increased the number of gonorrhea positives among women. Also, active screening of women participating in the screening program may contribute to the disproportionate number of females detected with gonorrhea infection.*