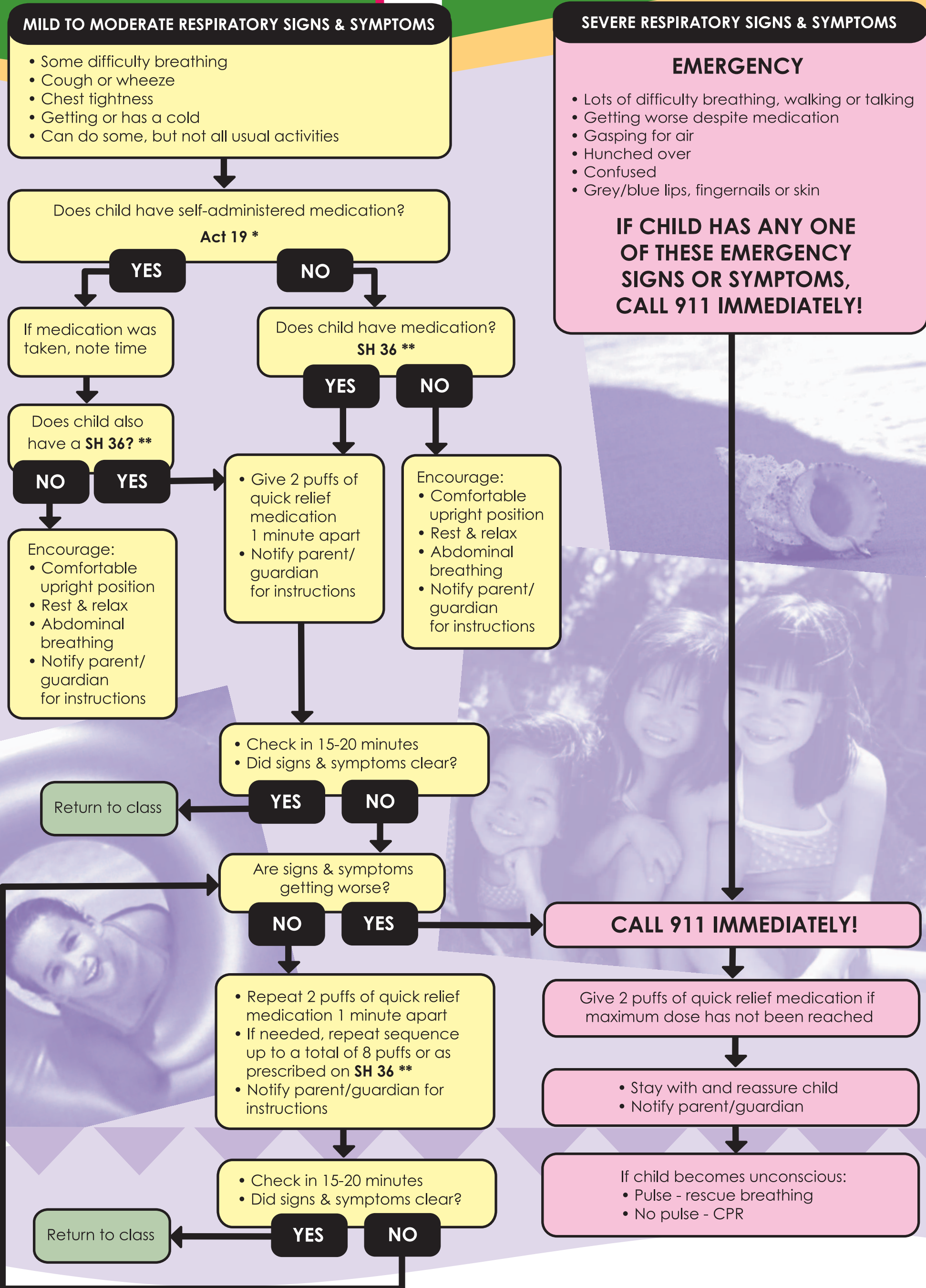


Respiratory Action Plan for schools

RAP

addressing asthma in schools



RAP Based on National Asthma Education and Prevention Program (NAEPP) guidelines

***Act 19** Permits DOE students to carry and self-administer their own inhaler for asthma and/or auto-injectable epinephrine (EpiPen)

****SH 36** Form requesting administration and storage of medication in a DOE school

DEVELOPED BY: The American Academy of Pediatrics - Hawaii Chapter + Public Health Nursing Branch + Department of Education Partnership Advisory Committee

SPONSORED BY: Hawaii State Asthma Control Program, Chronic Disease Management and Control Branch

For more information, contact the Hawaii State Department of Health, Public Health Nursing Branch at (808) 586-4620. This publication was supported by cooperative agreement number U59/CCU925028-01 from the Centers for Disease Control and Prevention (CDC). Its contents are solely the responsibility of the authors and do not necessarily represent the official views of the CDC. October 2005, Quantity Printed 500