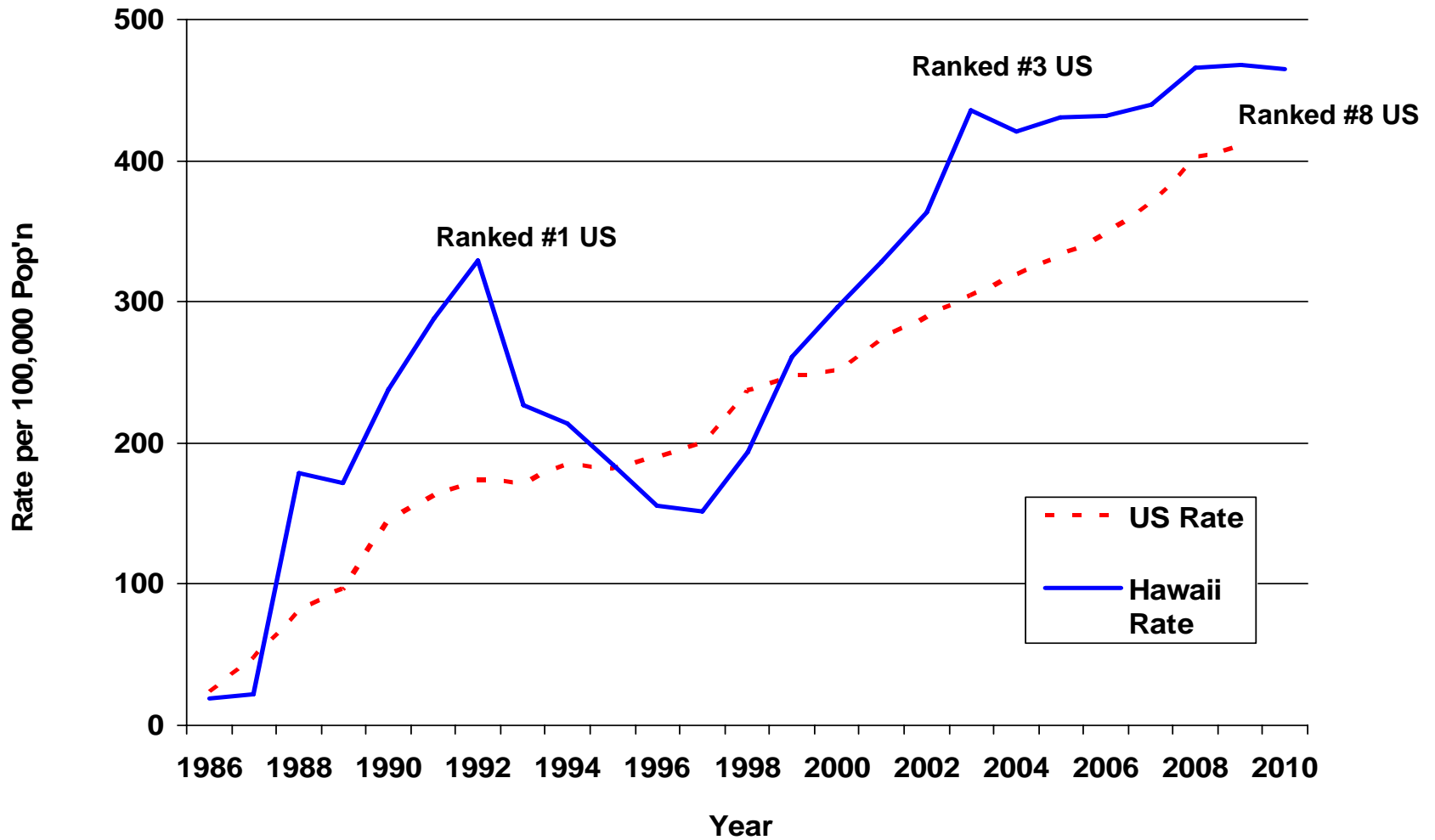
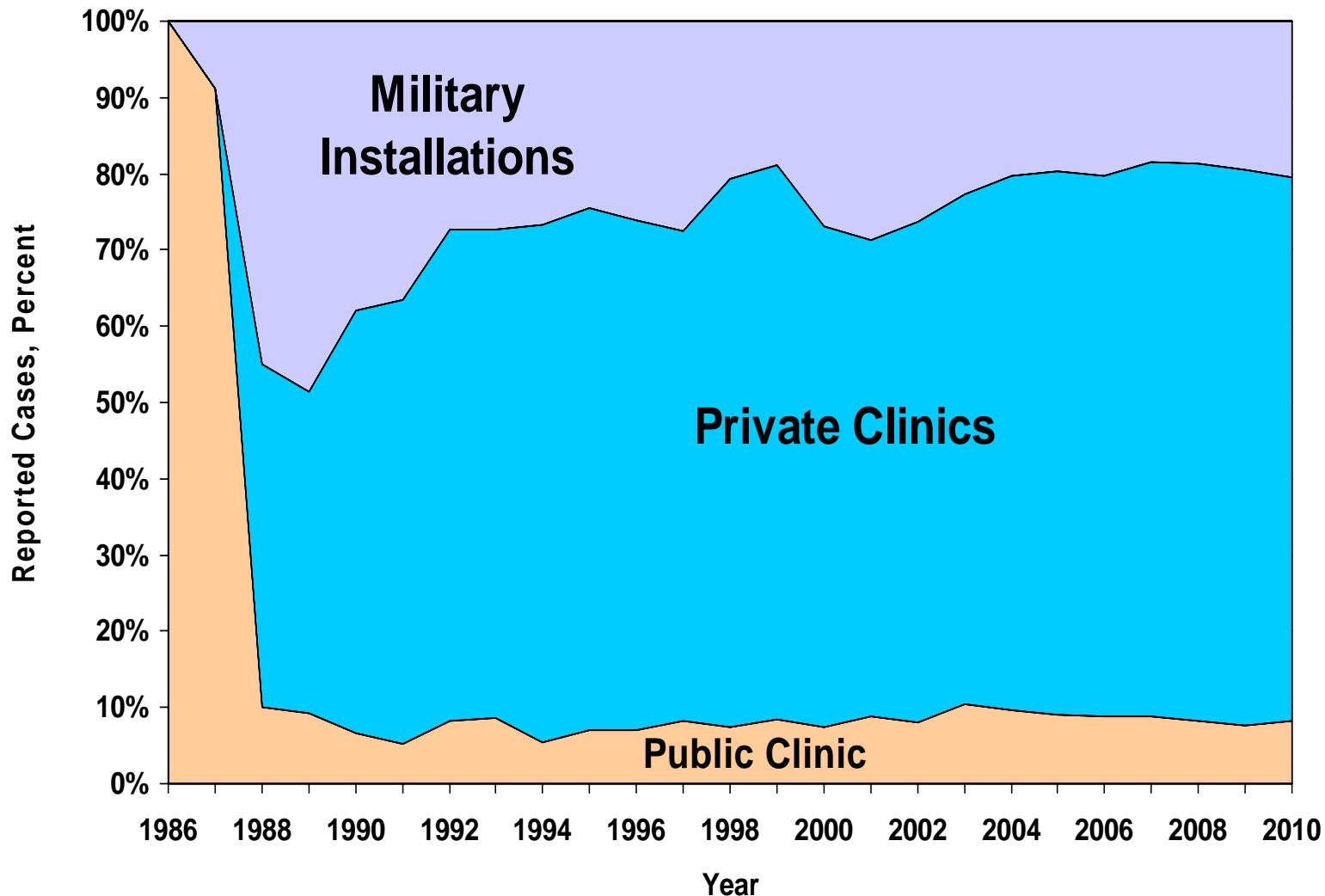


Chlamydia Case Rate by Year. Hawaii and U.S., 1986-2010

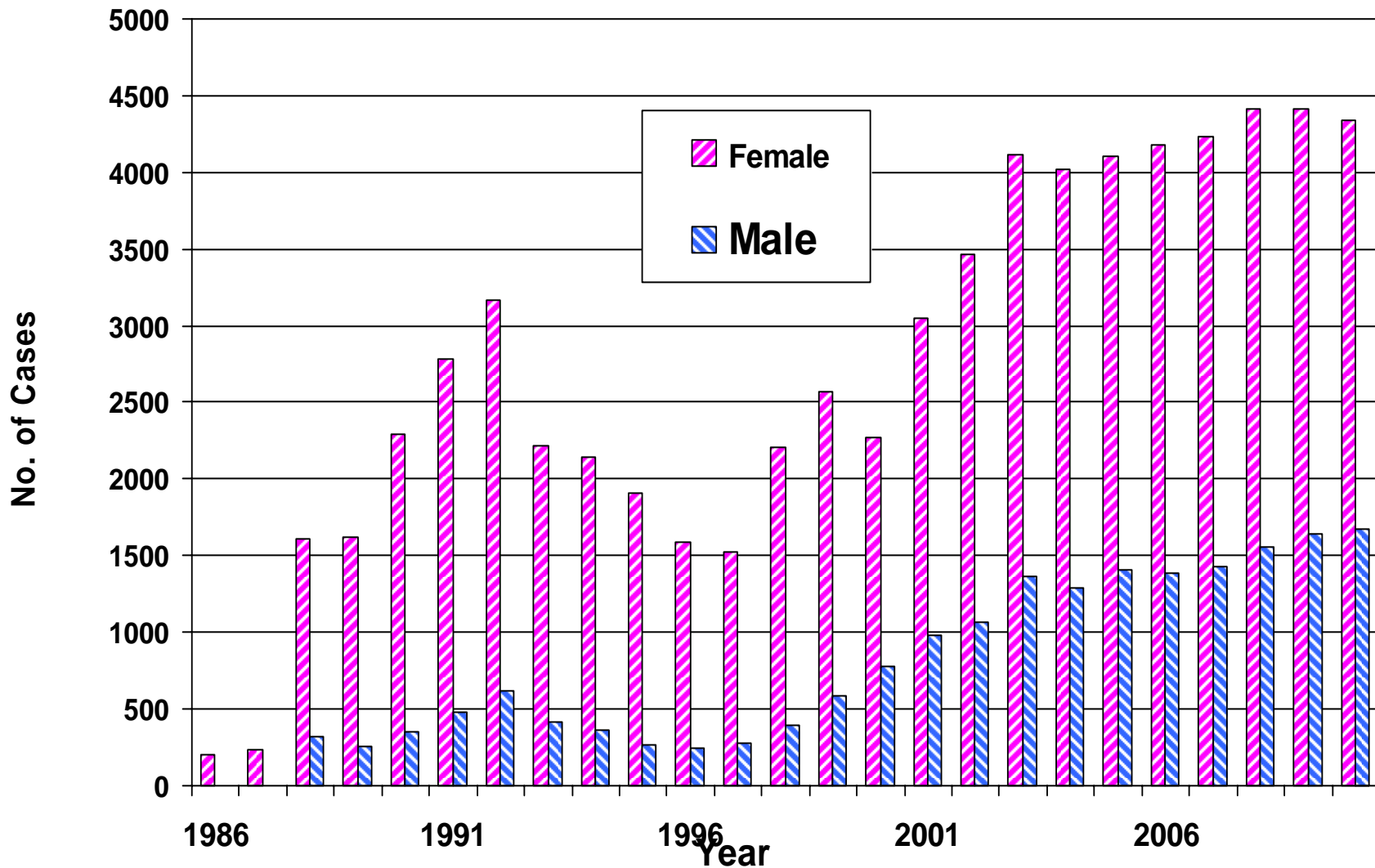


Chlamydia Cases by Reporting Source. Hawaii, 1986- 2010



Note: In the late 1987, the Hawaii Chlamydia Screening Program was established to prevent infertility and reduce the incidence of pelvic inflammatory diseases. Since then, approximately 20-25% of the annually reported chlamydia cases from the private clinics/facilities are screened through the Hawaii Chlamydia Screening Program. In 2003, a more sensitive laboratory test known as NAAT was instituted. This laboratory test conversion increased chlamydia positivity rate from 4% to 7%.

Chlamydia Morbidity by Gender and Year. Hawaii, 1986 – 2010



Note: The Chlamydia Screening Program/Infertility Project which screens females participating in family planning services may contribute to the disproportionate number of females detected with chlamydial infection. In 2003, a more sensitive laboratory test known as NAAT was instituted. This laboratory test conversion increased chlamydia positivity rate from 4% to 7%.