

# Chemical Terrorism Event Collection, Packaging & Shipping Instructions For Blood Specimens

## A. Specimen Collection

1.

- **Collect blood specimens for each patient in the listed order:**

1. 3 Purple Top Tubes
2. 1 Gray or Green Top Tube

**Note:** If using 3 mL tubes collect a fourth purple top tube. Do not collect blood specimens from pediatric patients unless otherwise directed.



2.

- **For purple top tubes:**

Label tubes in order of collection: "1", "2", "3".

- **Mix each tube by inverting it 5-6 times.**



3.

- **For gray or green top tube:**

Make sure that the gray or green top tube is collected after all of the purple top tubes.

- **Mix the tube by inverting it 5-6 times.**

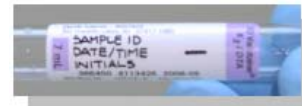


4.

- **Label the blood tubes.**

Label information should include at least the following:

- Sample ID
- Date & Time of Collection
- Collector's Initials



**Note:** If a bar code is used, put it on tube vertically.

- **Include two empty tubes of each lot number used.**

- **Store blood samples at 4°C to 8°C. Do not freeze.**

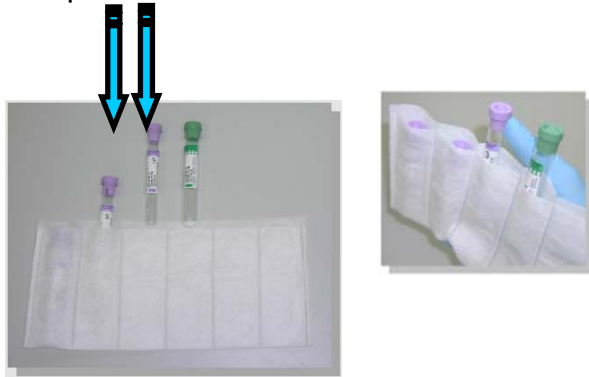


## B. Specimen Packaging

1.

- Insert all blood tubes for a single patient into one absorbent pouch.

Place all blanks into a separate pouch.



2.

- Place absorbent pouch into biohazard bag and seal.

Each bag can hold approximately 10 sleeves.

**Note:** Use 95 kPa compliant secondary packaging materials.



3.

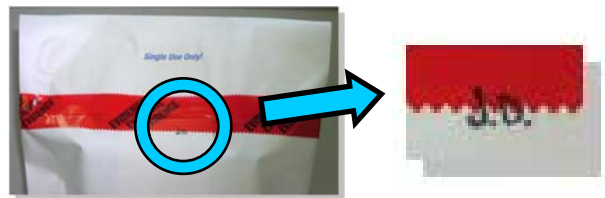
- Place biohazard bag into Tyvek bag and seal.



4.

- Secure Tyvek bag with evidence tape.

- Initial as shown.



## C. Insulated Shipping Container Packing

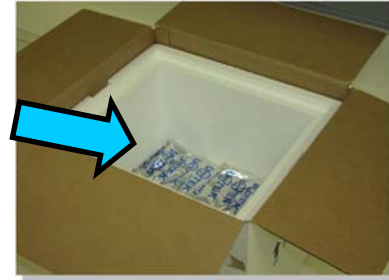
1.

- Place a layer of absorbent pads on the bottom of the shipping container.



2.

- Place a layer of 0°C cold packs on top of the absorbent pads layer.



3.

- Place the packaged blood tube sleeves in the shipping container.

Add absorbent padding as necessary to prevent shifting of bags during transit.



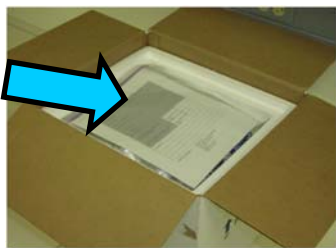
4.

- Add a layer of 0°C cold packs on top of the packages and absorbent pads.



5.

- Insert the Blood Shipping Manifest in a sealable plastic bag and put it on top of the shipping container.



6.

- Put the lid on the container.
- Use strapping tape to seal the container.



## 7.

- **Label the Shipping Container Exactly as Follows.**

Make sure that all labels are on one side of the box.

1. Address shipping container (“To” and “From” addresses).
2. Write down the name and phone number of person responsible for the package.
3. Place a UN3373/Biological Substance Category B label on the shipping container.



- **Ship to:**  
**Centers for Disease Control and Prevention**  
**ATTN: LTJG Ernest McGahee**  
**4770 Buford Hwy**  
**Building 110 Loading Dock**  
**Atlanta, GA 30341**  
**(770) 488-7579**

### Questions? Contact Us:

- Alfred Asato, Ph.D., Coordinator  
Phone: 453-6748  
Cell: 864-5216
- Gerald Pitz, Assistant Coordinator  
Phone: 453-6749
- Steven Bailey, Chemist  
Phone: 453-6677

Or visit us on the web:  
<http://www.hawaii.gov/health/laboratories/chemical-terrorism/index.html>



**HAWAII STATE  
DEPARTMENT  
OF HEALTH**

**Chemical Terrorism Response Laboratory**  
**Hawaii State Department of Health**  
**Revised: 28 November 2007**

# Chemical Terrorism Event Collection, Packaging & Shipping Instructions For Blood Specimens

## Activity Checklist

### A. Specimen Collection

- 1. **Collect purple top tubes**  
Number tubes in order of collection;  
If 3mL tubes used 4 tubes are required
- 2. **Collect green or gray tube**
- 3. **Set aside empty blood tubes**  
Two blood tube blanks per lot number used
- 4. **Label tubes**
- 5. **Store tubes at 4°C to 8°C**

### B. Specimen Packaging

- 1. **Insert blood tubes into absorbent pouches**  
One set of patient blood tubes per pouch
- 2. **Place pouches into biohazard bags**  
Approximately 10 pouches per bag
- 3. **Place biohazard bags into Tyvek bags**
- 4. **Secure Tyvek bag with evidence tape**

### C. Insulated Shipping Container Packing

- 1. **Layer of absorbent pads on bottom of shipper**
- 2. **Layer of 0°C cold packs**
- 3. **Place Tyvek bags in shipper**  
Using absorbent pads as necessary
- 4. **Layer of 0°C cold packs**
- 5. **Blood shipping manifest and other documentation**
- 6. **Seal container with strapping tape**
- 7. **Label / address shipper correctly**