

Chemical Terrorism Event Collection, Packaging & Shipping Instructions For Urine Specimens

A. Specimen Collection

1.

- **Collect at least 25mL of urine in a spill-proof collection cup.**

The ideal collection time is 7-8 hours after the estimated time of exposure.



2.

- **Label the collection cup.**

Label should include at least the following information:

- Sample ID
- Date & Time of Collection
- Collector's Initials



Note: If a bar code is used, put it on cup vertically.



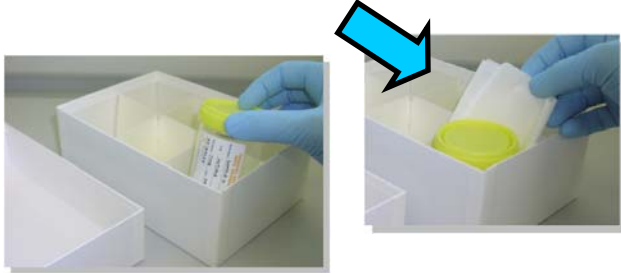
3.

- **Freeze urine specimens at -70°C.**
- **Put aside two empty collection cups for each lot number used during specimen collection.**

B. Specimen Packaging

1.

- Placed secured urine cups into gridded box with absorbent sheet.



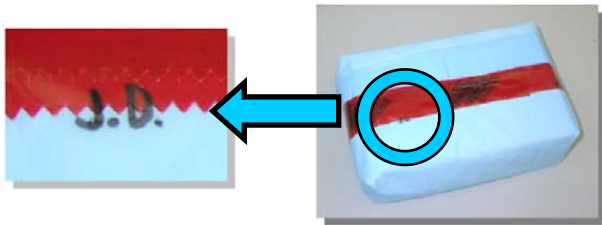
2.

- Put lid on gridded box.
- Wrap box with absorbent pad.



3.

- Secure absorbent pad with evidence tape.
- Initial as shown.



4.

- Place box into biohazard bag and seal.

Note: Secondary packaging must be 95kPa compliant.



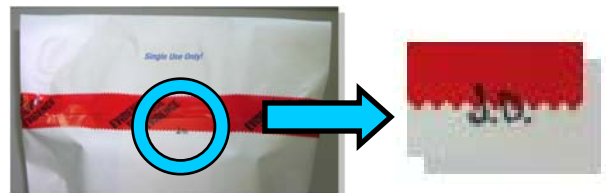
5.

- Place biohazard bag into Tyvek bag and seal.



6.

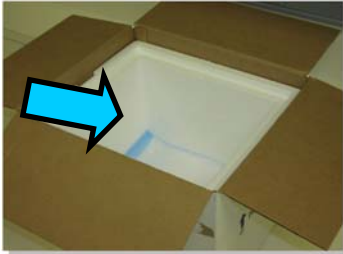
- Secure the Tyvek bag with evidence tape.
- Initial as shown.



C. Insulated Shipping Container Packing

1.

- Place a layer of absorbent pads on the bottom of the shipping container.



2.

- Add a layer of dry ice on top of the absorbent pads.

Do not use large chunks of dry ice. Use cold packs if dry ice is not available.



3.

- Place the packaged boxes in the shipping container.

Add absorbent padding as necessary to prevent shifting of bags during transit.



4.

- Add a layer of dry ice on top of the packages and absorbent pads.



5.

- Insert the Urine Shipping Manifest in a sealable plastic bag and lay it on top of the shipping container.



6.

- Put the lid on the container.
- Use strapping tape to seal the container.

- **DO NOT SEAL THE EDGES OF THE CONTAINER!**

The box must be able to vent as the dry ice evaporates.

7.

○ **Label the Shipping Container Exactly as Follows.**

Make sure that all labels are on one side of the box.

1. Address shipping container (“To” and “From” addresses).
2. Write down the name and phone number of person responsible for the package.
3. Place a UN3373/Biological Substance Category B label on the shipping container.
4. Place a Class 9 Hazard/Dry Ice Label on the shipping container.

Fill out label completely, include on label amount of dry ice in container (in kilograms, 2.2kg max), address of shipper, address of recipient, and the term “Dry Ice” or “Carbon Dioxide, Solid”.



- **Ship to:** Centers for Disease Control and Prevention
ATTN: LTJG Ernest McGahee
4770 Buford Hwy
Building 110 Loading Dock
Atlanta, GA 30341
(770) 488-7579

Questions? Contact Us:

- Alfred Asato, Ph.D., Coordinator
Phone: (808) 453-6748
Cell: (808) 864-5216
- Gerald Pitz, Assistant Coordinator
Phone: (808) 453-6749
- Steven Bailey, Chemist
Phone: (808) 453-6677



Or visit us on the web:
[http://www.hawaii.gov/health/laboratories/
chemical-terrorism/index.htm](http://www.hawaii.gov/health/laboratories/chemical-terrorism/index.htm)

Chemical Terrorism Response Laboratory
Hawaii State Department of Health
Revised: 28 November 2007

Chemical Terrorism Event Collection, Packaging & Shipping Instructions For Urine Specimens

Activity Checklist

A. Specimen Collection

- 1. **Collect 25mL of urine or more per patient**
- 2. **Set aside two empty collection cups**
Two collection cup blanks per lot number used
- 3. **Label cups**
- 4. **Store cups at -70°C**

B. Specimen Packaging

- 1. **Place cups into gridded box with absorbent sheet**
One absorbent sheet per cup
- 2. **Wrap box with absorbent pad**
- 3. **Secure pad with evidence tape and initial**
- 4. **Place biohazard bag into Tyvek bag**
- 5. **Secure Tyvek bag with evidence tape and initial**

C. Insulated Shipping Container Packing

- 1. **Layer of absorbent pads on bottom of shipper**
- 2. **Layer of dry ice**
- 3. **Place Tyvek bags in shipper**
Using absorbent pads as necessary to cushion bags
- 4. **Layer dry ice**
- 5. **Urine shipping manifest and other documentation**
- 6. **Seal container with strapping tape**
Do not seal completely, allow dry ice to vent
- 7. **Label / address shipping container correctly**