

What is an SRC???





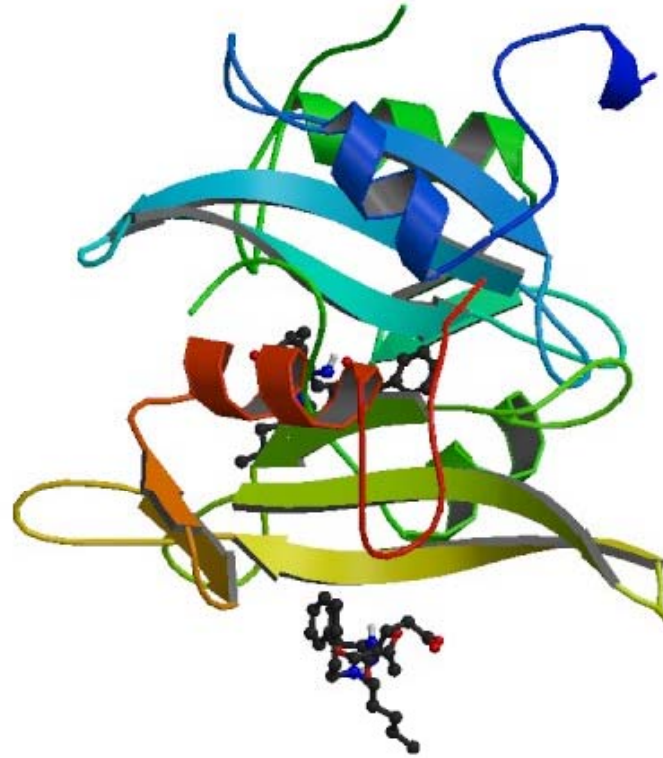
# SRC



Home of  
Aladdin

Synchrotron Radiation  
Center

# SRC



V-SRC Sarcoma viral oncogene homolog



**SEARS**

# Rehabilitation Act of 1973

## Divided into 7 Titles

Title I provides the basic structure of the public rehabilitation system, including the role of State VR agencies

Title I provides for the formation of Client Assistance Programs or CAPs

Title I also provides for the formation of State Rehabilitation Councils or SRCs

# Role of the SRC

Voice of consumers, stakeholders

- Advocates for VR
- Works in partnership with agency
- Common goal - maximizing employment and independent living

# State Rehabilitation Council

## Section 105 of the Rehabilitation Act:

- At least 15 members
- Majority with disabilities
- Cross section of stakeholders
  - persons with disabilities
  - related service agencies
  - disability advocates
  - community business people

# State Rehabilitation Council

At least 4 meeting a year

- Review, evaluate agency activities
- Evaluate agency services, outcome, policies, reports, etc,
- Help agency judge its performance
- State agency must consult SRC on policy and procedure changes
- SRC feedback is sometimes challenging

# State Rehabilitation Council

Helps develop agency performance goals,  
priorities

- Review of progress at end of year

Helps the agency amend the State Plan

- Agency submits plan, SRC comments &  
response to SRC comments to RSA

# State Rehabilitation Council

Statewide needs assessment

-SRC & agency conduct every 3 years

SRC reviews VR program effectiveness & consumer satisfaction

SRC can hold hearings or special meetings

# State Rehabilitation Council

SRC requirement in the Rehabilitation Act makes State agency:

- Get local, external perspective
- Reach out to other service providers, community groups and other state agencies

# Rehabilitation Act of 1973

Intent to create public rehabilitation system

- consumer oriented

- consumer driven

SRC embodies the partnership needed for that goal