

WHO AND WHERE ARE HAWAII'S LEP POPULATION?



Serafin Colmenares Jr.
Office of Language Access

3rd Annual Hawaii Conference on Language Access
August 26, 2010
East-West Center
Honolulu, Hawaii

Introduction

- Knowing who and where your population is is important for planning, response and recovery efforts to be successful - before, during and after emergencies.



- Will look at Hawaii's LEP population - their demographic and socio-economic characteristics and their geographic location.

Introduction

- LEP (limited English proficient) = those who speak English well, not well, and not at all (U.S. Census).
- Data taken from U.S. Census Bureau, 2006-2008 American Community Survey Public Use Microdata Sample (PUMS) – provided by the Department of Business, Economic Development and Tourism (DBEDT).

Hawaii's LEP Population

- Out of Hawaii's total population of 1,280,273, about 23.2% or 296,402 speak a language other than English at home.
- Out of those who speak a language other than English at home, 134,556 or 45.4% are LEP.
- Out of the total LEP population, 107,145 or about 80% live on Oahu.
- Out of the total LEP population, more than 83.2% are Asian language speakers while 9.2% are Native Hawaiian and Pacific Island language speakers.

Who Are They?

- race
- age
- language spoken
- sex, marital status,
and nativity
- education
- income/poverty level



Race

Race	# LEP
White alone	5,994
Black or African-American alone	640
Asian alone	109,700
Native Hawaiian & Pacific Islander alone	11,722
American Indian/Alaskan Native alone	206
Other races alone	3,159
Two or more major race groups	3,135
Total LEP	134,556

Age

Age Group	# LEP
19 years old and below	10,672
20 to 39 years old	32,955
40 to 59 years old	45,411
60 to 79 years old	34,103 (46.8% are Ilokano and Tagalog; 20.1% Japanese; and 11.8% Chinese)
80 years old and above	11,415 (41.5% are Japanese; 34.1% are Ilokano and Tagalog; 14.3% Chinese)
Total LEP	134,556

Top LEP Languages

- Ilokano (27,077)
- Tagalog (26,418)
- Japanese (21,710)
- Chinese, includes Mandarin and Cantonese (15,751)
- Korean (11,397)
- Spanish (7,384)
- Other Pacific Island (Micronesian) languages (6,458)
- Vietnamese (5,060)
- Samoan (3,334)
- Bisayan (2,137)
- Hawaiian (1,292)

Sex, Marital Status, and Nativity

- Of the total LEP population, 78,015 or 58% are female and 56,541 or 42% are male.
- Of the total LEP population, 77,251 or 57.4% are married; 26,808 or 20% are widowed, divorced or separated; while the remaining 22.6% are never married.
- 111,121 or 82.6% are foreign-born, mostly Filipinos and Japanese.

Education

- 47,919 or 35.6% have less than high school education.
- 40,973 or 30.5% have a high school diploma.
- 88,892 or 66.1% have not gone beyond high school.
- 107,947 or 80.2% have no college degree (associate's or bachelor's).

Income/Poverty Level

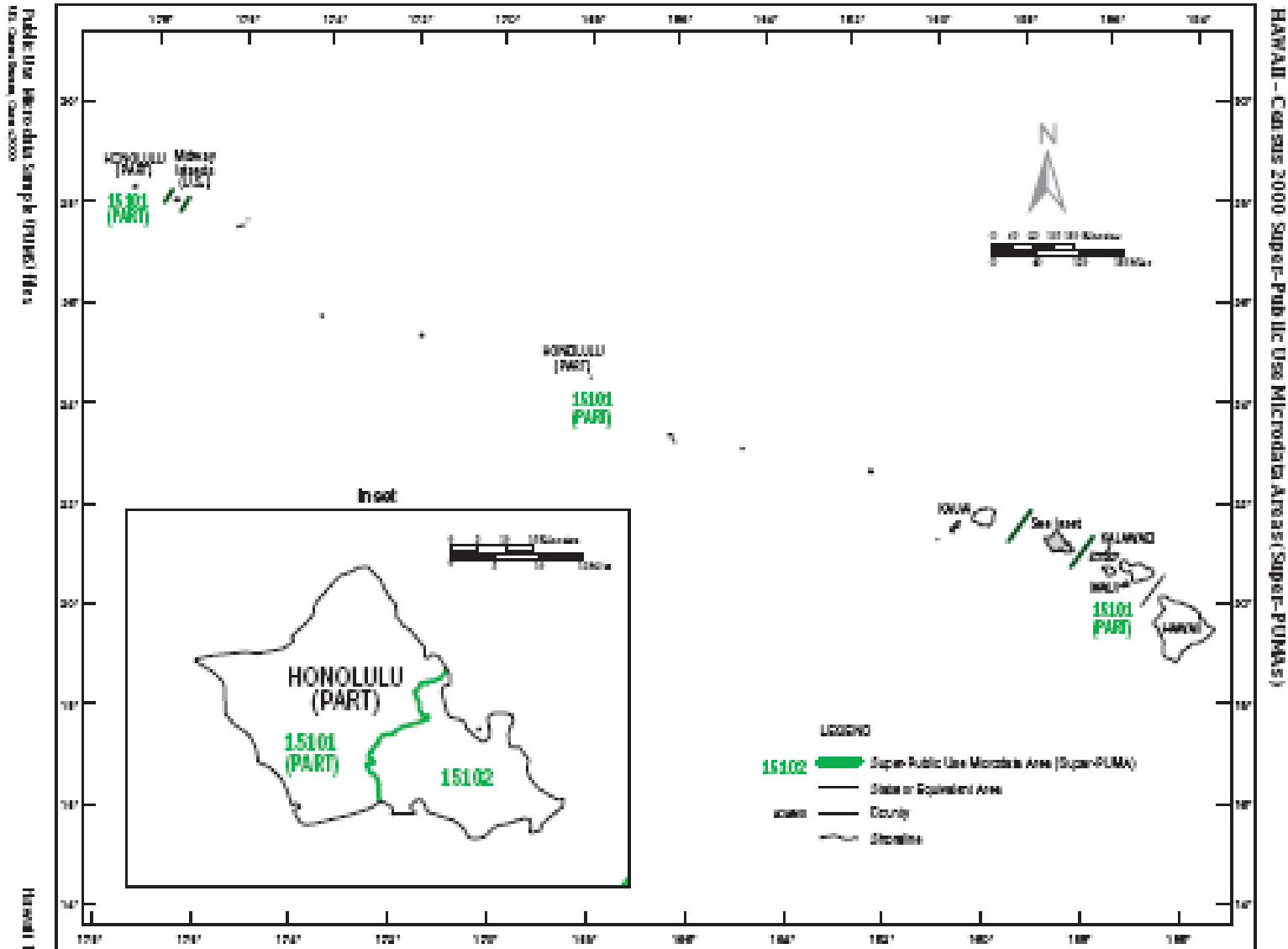
- 79.5% earn less than \$35,000 annually
- 65.2% earn less than \$25,000 annually
- 45.9% earn less than \$15,000 annually
- 35.1% earn less than \$10,000 annually

% of Poverty Level	# LEP
<= 100 %	15,790
<= 150 %	27,692
<= 200 %	40,646
> 200 %	91,032

Where Are They?

- Almost 80% of LEPs are on Oahu.
- Available US Census Data divides the state into PUMAs (Public Use Microdata Areas).
- Only Oahu is subdivided into several – seven – PUMAs.

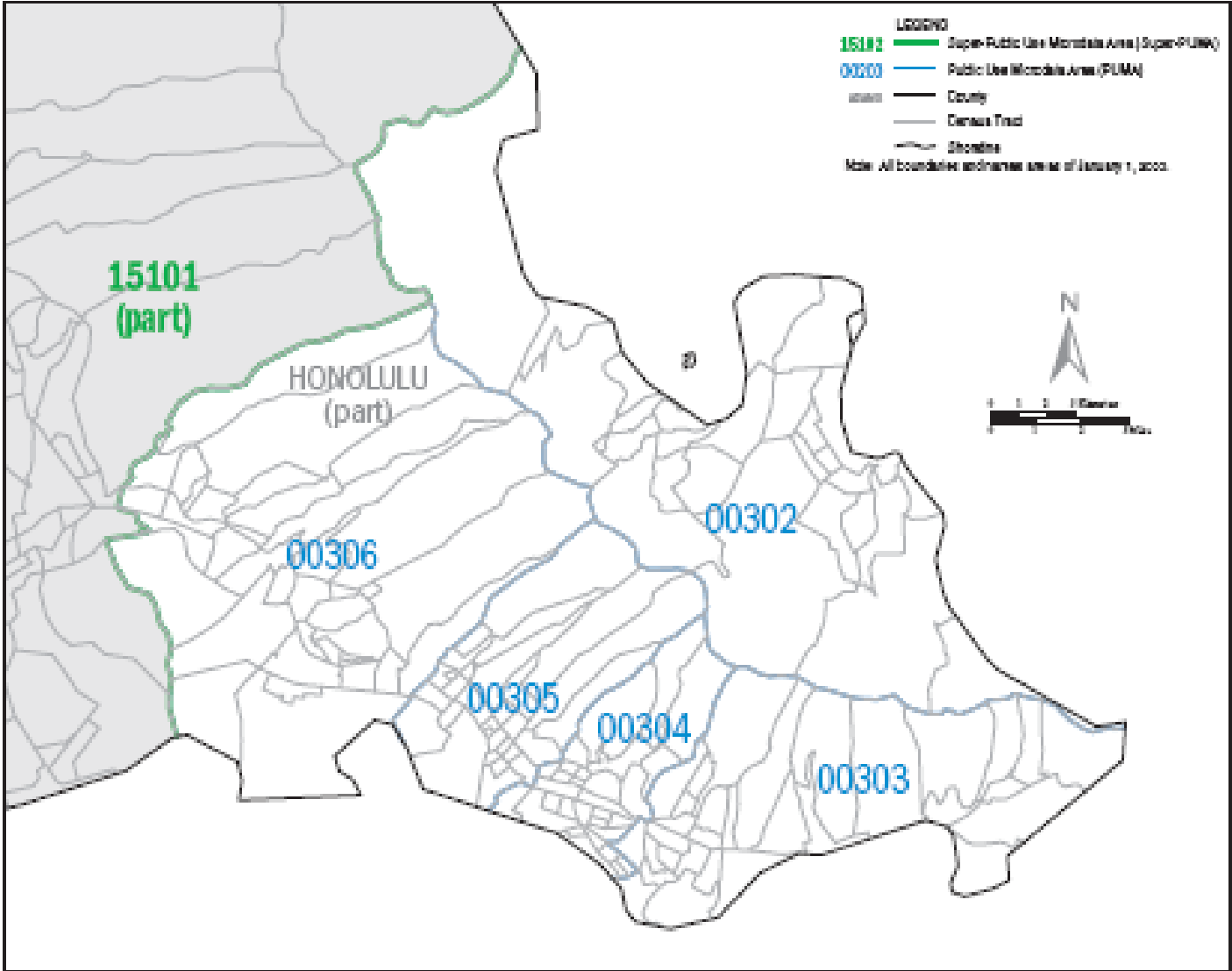
Hawaii's Super-PUMAs



Eastern Oahu's PUMAs

Public Use Microdata Sample (PUMS) files
US Census Bureau, 2000-2009

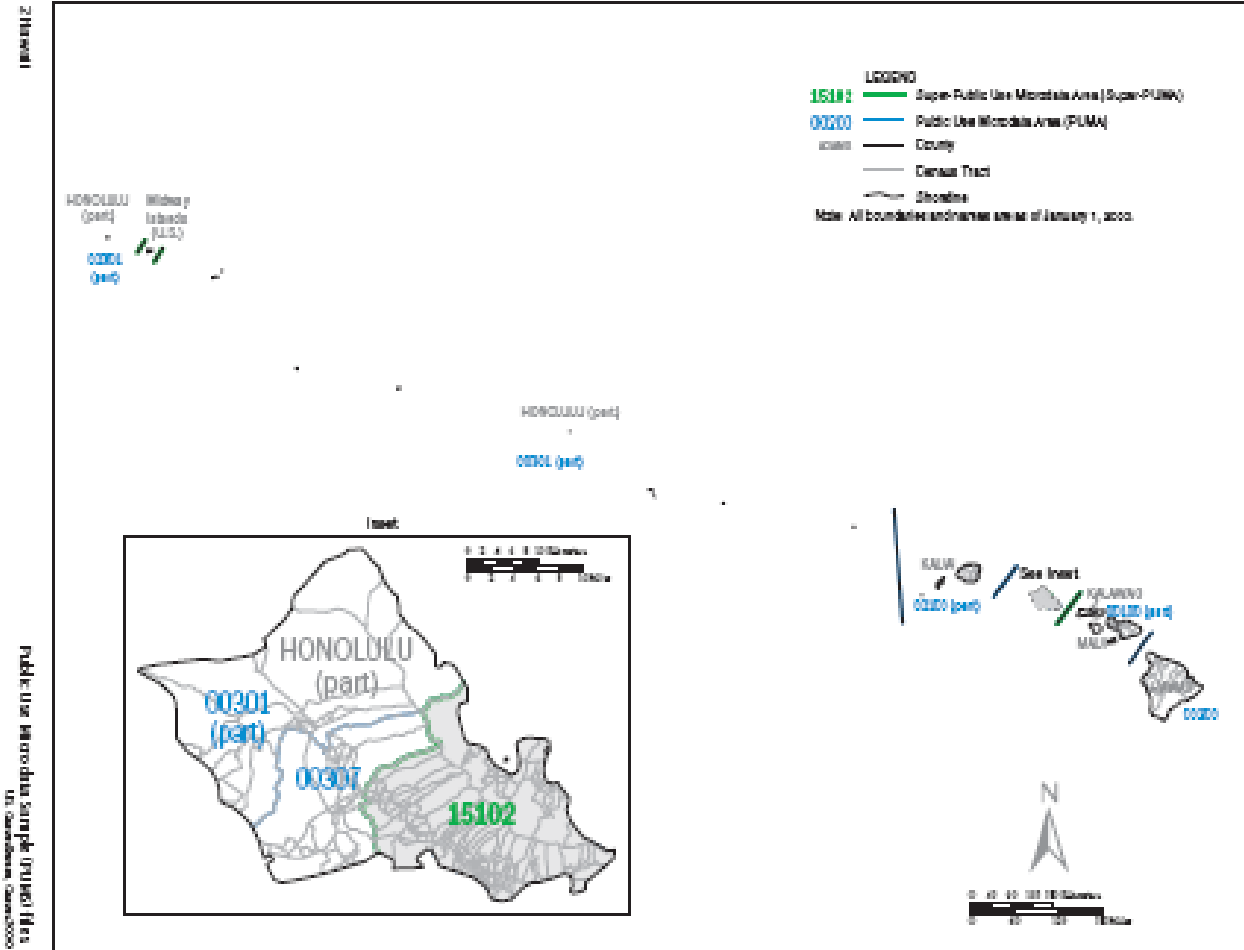
Hawaii 13



HAWAII Super-PUMA 15101: Census 2000 Public Use Microdata Areas (PUMAs)

PUMA 0301 Rural Oahu

(Waianae, North Shore, Koolauloa)



HAWAII Super-PUMA 15101: Census 2000 Public Use Microdata Areas (PUMAs)

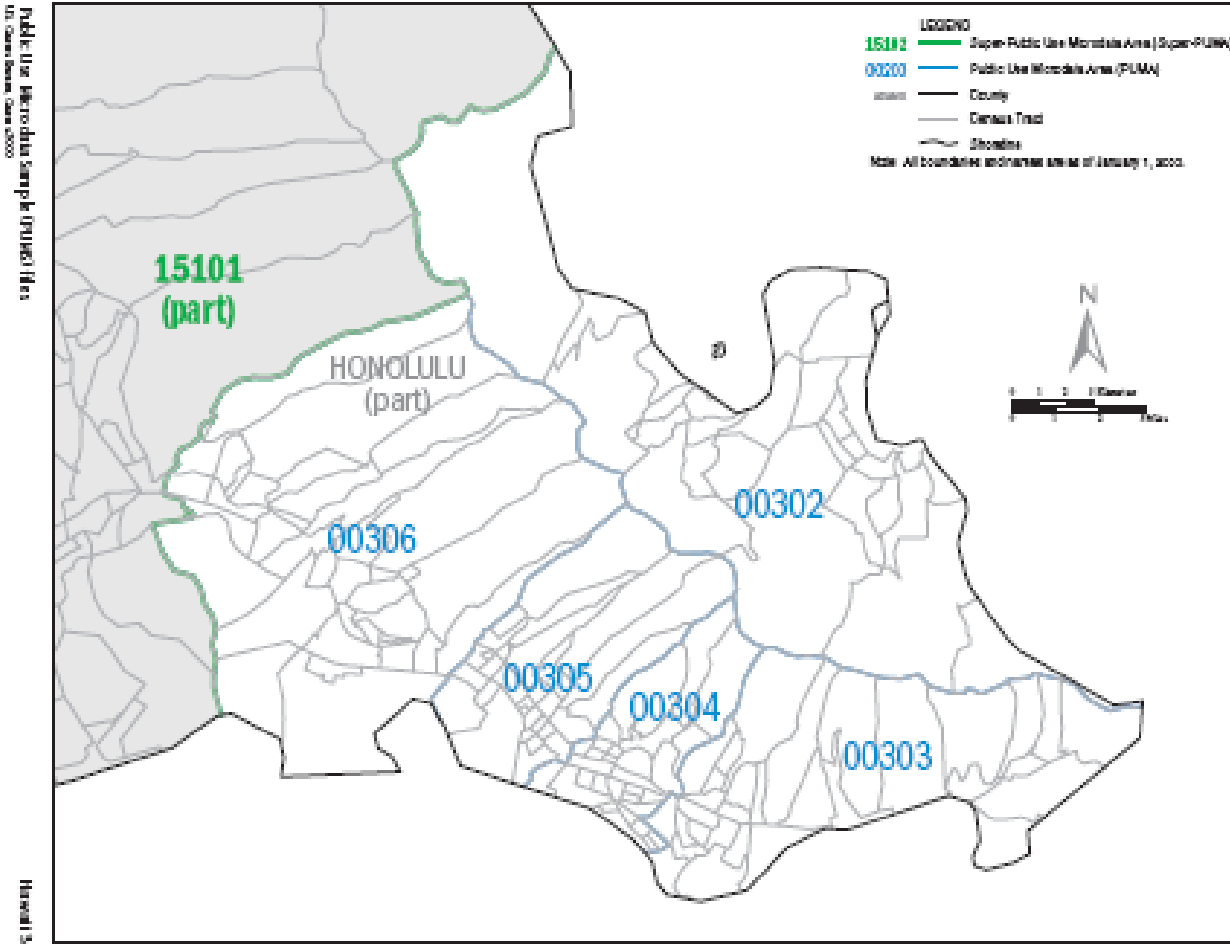
Top 10 LEP

Language groups:

- Tagalog (1,982)
- Ilokano (1,561)
- Japanese (1,002)
- Samoan (846)
- Korean (414)
- Spanish (368)
- Hawaiian (223)
- Chinese (215)
- Tongan (170)
- Mandarin (140)

PUMA 0302 Koolaupoko

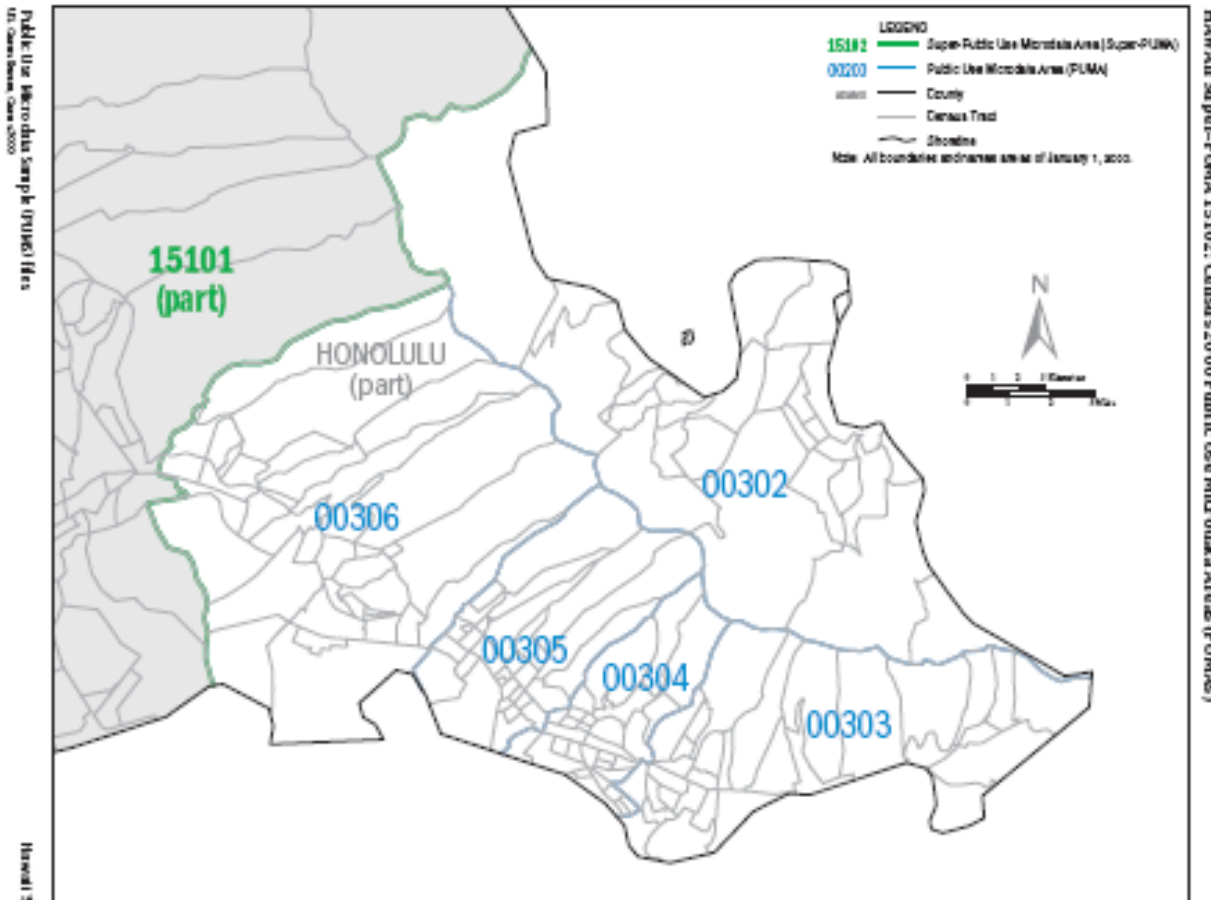
(Kahaluu, Kaneohe, Kailua, Waimanalo, Mokapu)



- Top 10 LEP language groups:
- Japanese (720)
 - Tagalog (711)
 - Other Pacific Island languages (503)
 - Spanish (329)
 - Chinese (255)
 - Bisayan (133)
 - Afrikaans (119)
 - Cantonese (118)
 - French (111)
 - Ilokano (106)

PUMA 0303 Makapuu-Manoa Stream

(Hawaii Kai, Kulioouou-Kalani Iki, Waialae-Kahala, Kaimuki, Diamond Head/Kapahulu/St. Louis Heights, Palolo)

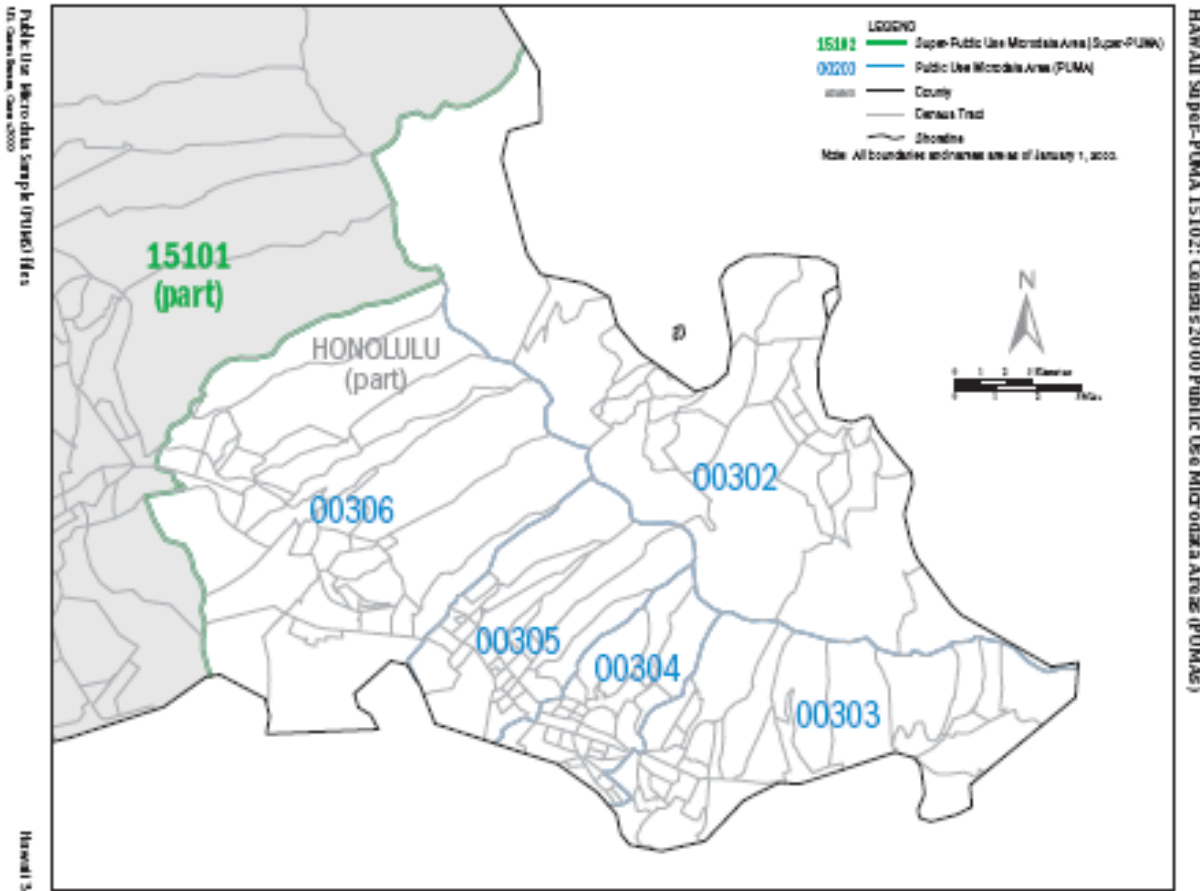


Top 10 LEP language groups:

- Japanese (4,203)
- Chinese (1,610)
- Korean (1,244)
- Cantonese (614)
- Vietnamese (526)
- Other Pacific Island languages (291)
- Spanish (194)
- Tongan (172)
- Ilokano (150)
- French (112)

PUMA 0304 Manoa-Waikiki-Kakaako-Tantalus

(Manoa, McCully/Moiliili, Waikiki, Makiki/Lower Punchbowl/Tantalus, Ala Moana/Kakaako)

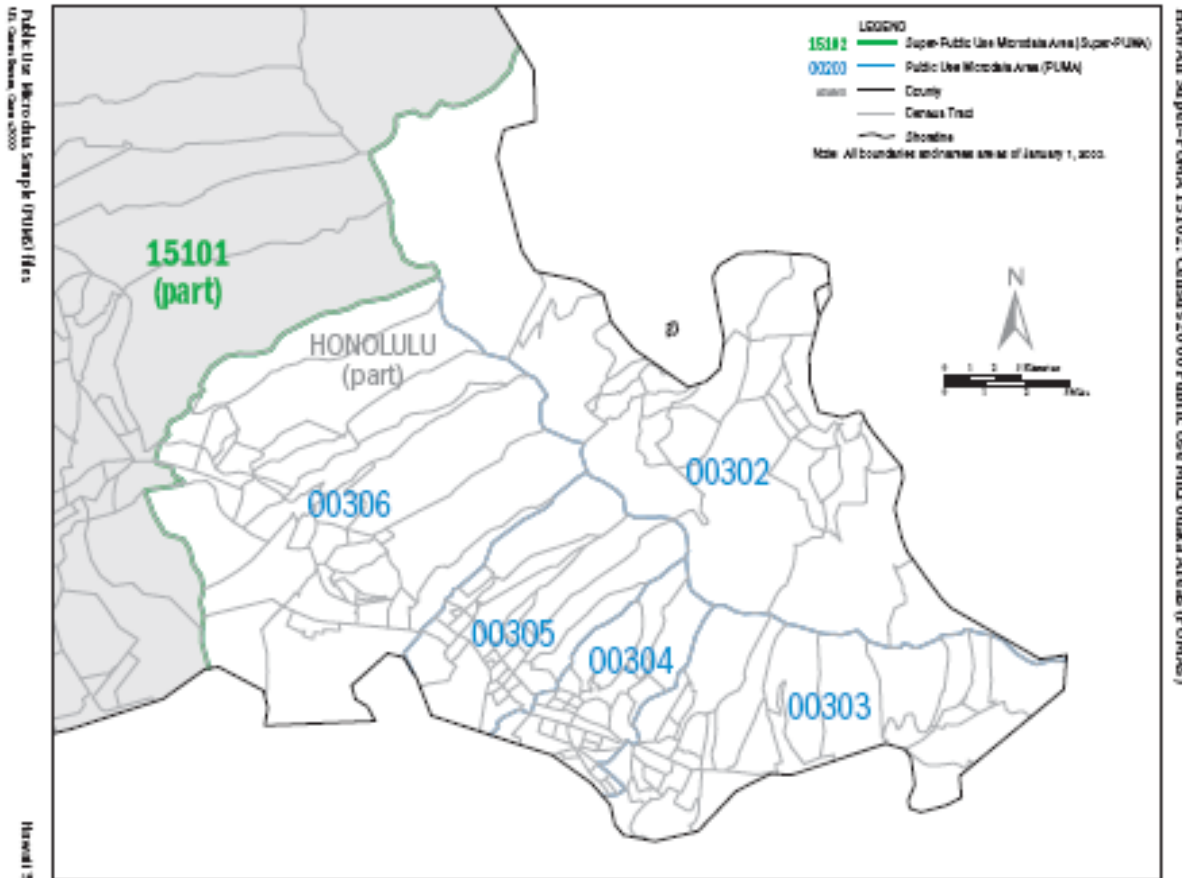


Top 10 LEP language groups:

- Japanese (6,031)
- Korean (5,166)
- Chinese (2,503)
- Vietnamese (1,560)
- Spanish (725)
- Other Pacific Island languages (602)
- Tagalog (548)
- Cantonese (308)
- Mandarin (281)
- Ilokano (264)

PUMA 0305 Pauoa-Downtown-Kalihi

(Nuuanu/Punchbowl, Downtown, Liliha/Kapalama, Kalihi-Palama, Kalihi Valley)

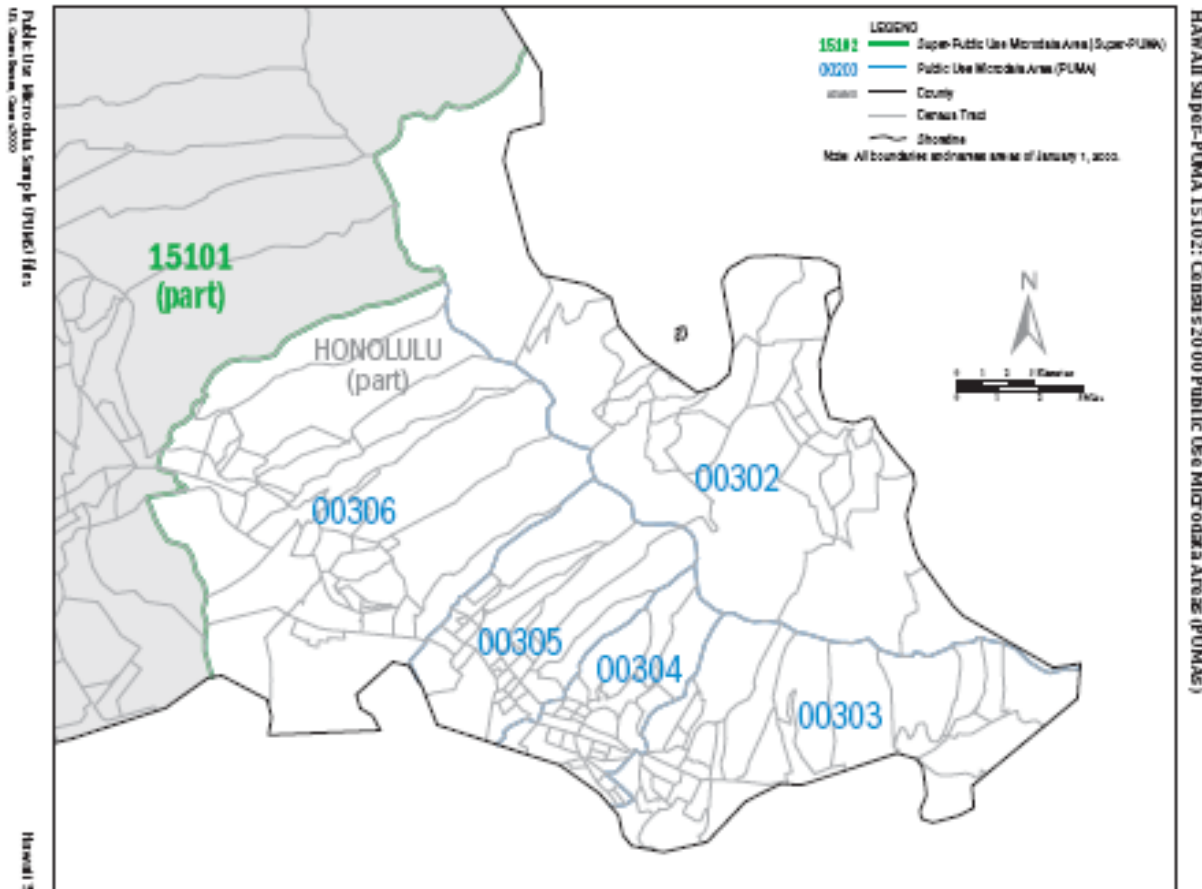


Top 10 LEP language groups:

- Tagalog (6,766)
- Ilokano (4,763)
- Chinese (4,552)
- Japanese (2,100)
- Cantonese (2,091)
- Vietnamese (1,910)
- Bisayan (1,121)
- Korean (1,059)
- Other Pacific Island languages (958)
- Samoan (586)

PUMA 0306 Moanalua-Airport-Pearl City

(Moanalua, Aliamanu/Salt Lake/Foster Village, Airport, Aiea, Waimalu-Pacific Pallisades)

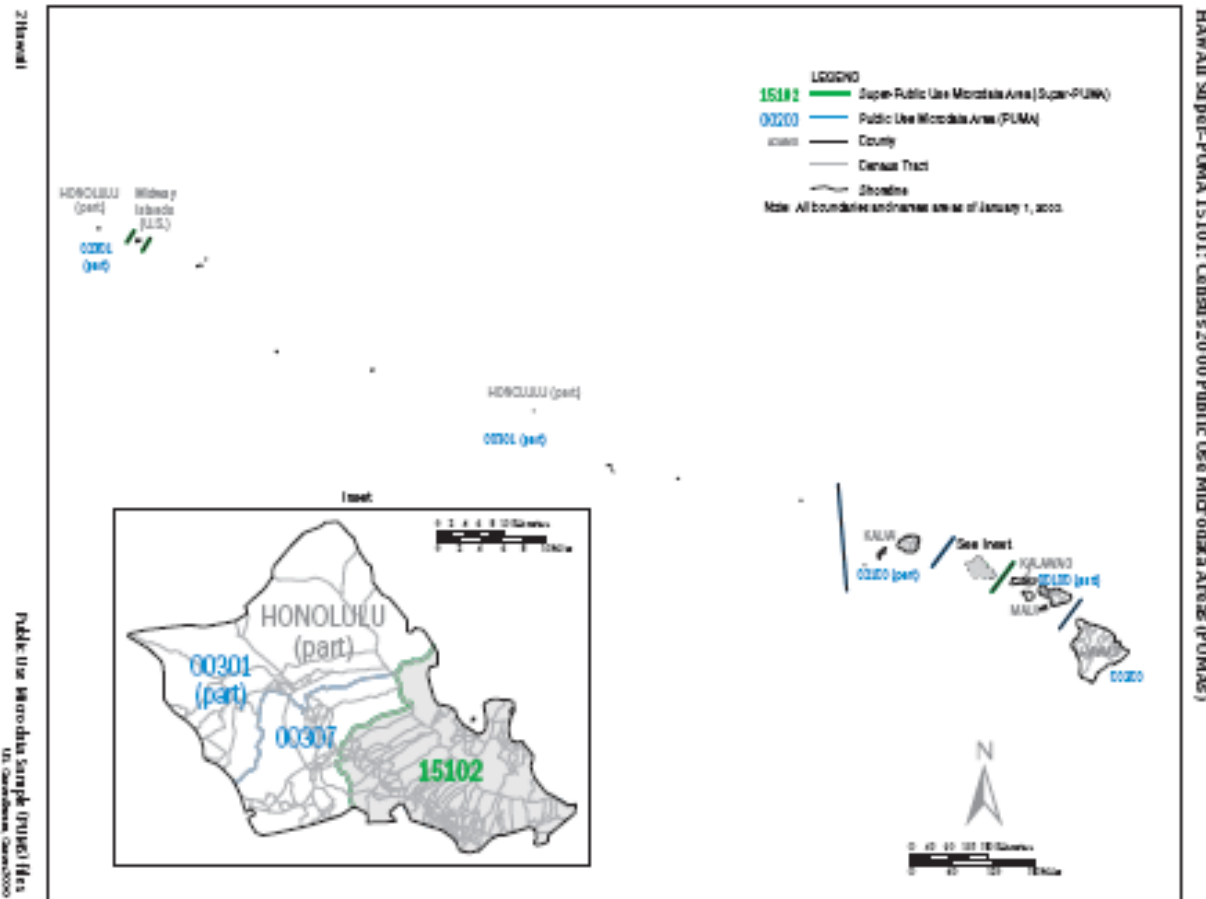


Top 10 LEP language groups:

- Japanese (2,821)
- Ilokano (2,693)
- Tagalog (2,647)
- Korean (1,719)
- Spanish (1,011)
- Chinese (869)
- Other Pacific Island languages (656)
- Cantonese (598)
- Vietnamese (315)
- Samoan (149)

PUMA 0307 Mililani-Waipahu-Ewa

(Wahiawa, Waipahu, Ewa, Mililani/Waipio/Helemanu, Makakilo/Kapolei/Honokai Hale, Mililani Mauka-Launani Valley)



Top 10 LEP language groups:

- Tagalog (8,212)
- Ilokano (7,549)
- Japanese (1,951)
- Samoan (1,706)
- Other Pacific Island languages (1,010)
- Korean (946)
- Spanish (864)
- Chinese (619)
- Hawaiian (401)
- Vietnamese (351)

Closing Thoughts

- Mapping provides more detailed information about the LEP population needed for emergency planning, response and recovery purposes.
- Need to do further mapping of the LEP population statewide in geographic areas smaller than PUMAs.

MAHALO NUI LOA!

