

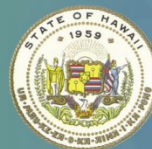
NAWB 2010 Conference Debriefing Lessons Learned And Recommendations for Next Steps



WORKFORCEDEVELOPMENT
COUNCIL



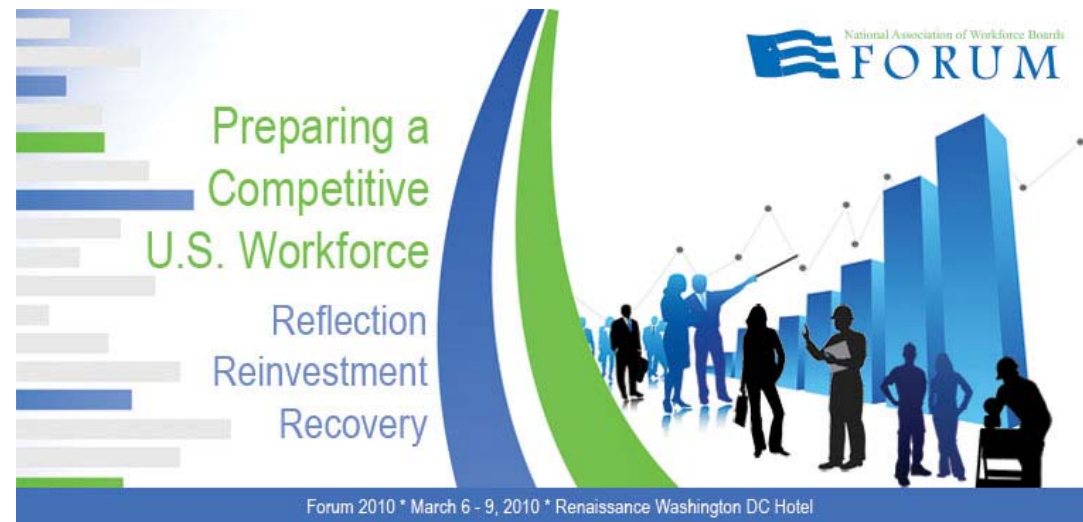
WDC Quarterly Meeting
DLIR Conference Room 310-311
Honolulu, Hawaii
May 13, 2010



**DEPARTMENT OF LABOR &
INDUSTRIAL RELATIONS**



- Represents 600 + Local and State WIBs
- Provides advocacy, training, communication and promotion of partnerships
- Annual conference draws 3,000+ attendees





WDC

- Carl Hinson
- Jeffrey Piontek
- Gregg Yamanaka
- Stanford Fichtman

Maui County

- Joann Inamasu
- Gwen Ueoka
- Ron Nelson
- Marlene Burgess

Oahu WIB

- Signe Godfrey
- Jim Tollefson
- Marilyn Matsunaga

Hawaii County

- Mike Gleason
- Char Shigemura
- George Martin
- Kimo Lee
- Waylen Leopoldino
- Debbie Shigehara
- Jessica Yamamoto
- Randy Kurohara
- Kathleen Nielsen



- NAWB Discussion on April 13
- Attendees: Signe Godfrey, Allen Chung, Carl Hinson, Kathleen Nielsen, Stan Fichtman



- 7.7 million people used One-Stop Centers
- One-Stop emphasis--marketing to businesses
- Largest job losses among 16-24 year olds
- Hardest hit: Construction and Manufacturing
- Hiring sectors: Education and Healthcare
- Skills shortage for 35 million jobs in the next 20 years



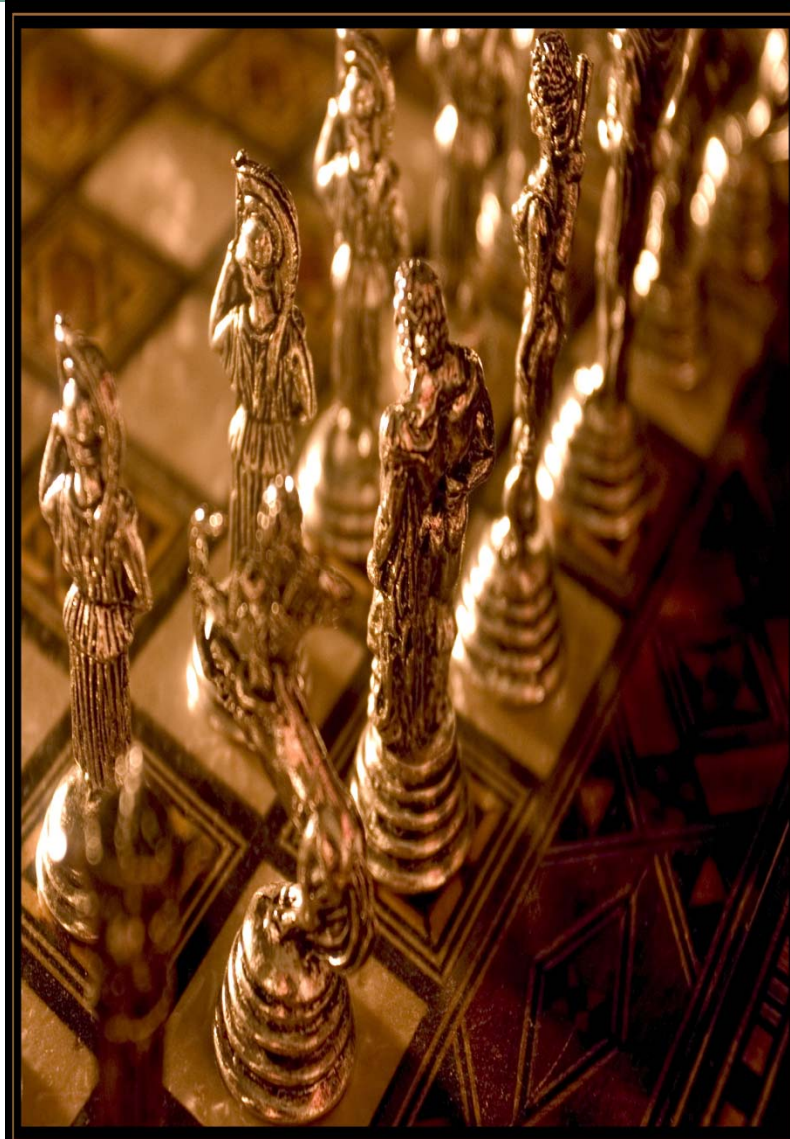
- Re-Authorization still a goal of US DOL
- Focus on career and employment services, stronger One-Stop Centers
- More intensive services for those requiring basic skills (functionally illiterate)
- New core measures for work-readiness
- American graduation initiatives
- Include WIB measures and evaluation



1. Hawaii's workforce development system needs better and timelier information.
2. More collaboration between the WDC and the LWIBs is essential.
3. The State needs to maximize existing funding streams.
4. There is a need to increase work-based training



- Too much “tactical” work rather than “strategic” work
 - I.e., LMI does not meet the needs of many employers)
 - Does not go into enough detail regarding identification of entry level verse experienced occupations
 - Healthcare Example





- Continue Healthcare Steering Committee—work with R&S and UHCCs
- Develop healthcare as model for other high-demand industries
- Goal to have WDC or LWIB member on NAWB National Board



- Better integrate DBEDT resources into workforce development
- WDC needs to assist LWIBs to ID what can be done at the strategic level
- At WDC meetings: more action-oriented activities, more sharing from committees



- Create ways to create an effective workforce system and be less reactive
- WDC should be advisor to the LWIBs
- Should be able to obtain timely information for decision-making



- WDC to address unique needs of each LWIB
- WDC to support LWIBs in terms of grants and other funding vehicles (i.e. Reed Act)
- WDC should be more strategic: what are the new industries and occupations? What are issues that affect workforce development?



- LWIBs need more custom info from DBEDT
- Comprehensive Plan should be addressed at each WDC Meeting

#3: Better Utilize Funding Streams



DEPARTMENT OF LABOR &
INDUSTRIAL RELATIONS

- There are many sources of funds—all are shrinking
- This situation creates reduced flexibility in developing and implementing programs



- More blending of funds to meet needs
- Broaden funding sources (such as education private funding)

#4: Increase Work-Based Training and Recommendations



DEPARTMENT OF LABOR &
INDUSTRIAL RELATIONS

- Increase work-based training where possible (SEE, VIP, Summer Employment, Apprenticeship and Internships)
- Collaborate with the private sector (SHRM and businesses)



- NAWB attendance should be a priority for the WDC—planned and budgeted
- Explore more entrepreneurship (fewer \$ in WIA). What are the training assets (i.e. PCATT and Chaminade)

Next Steps (con't)



- Better connect economic and workforce development (such as in healthcare)
- Membership—what will strengthen the WDC?
Banking and
Defense/Dual-Use?





- Comments from other attendees?
- Discussion of Next Step ideas?
- What next?